

UTAH FURBEARER ANNUAL REPORT 2018-19



Publication No. 19-25



UTAH FURBEARER ANNUAL REPORT 2018–19

Prepared by:

Heather H. Bernales
Biometrician

and

Darren DeBlois
Mammals Program Coordinator

Publication No. 19-25

Annual Performance Report for Federal Aid Project W-65-M, segment 67

State of Utah
Department of Natural Resources
DIVISION OF WILDLIFE RESOURCES

Michal D. Fowlks
Director

TABLE OF CONTENTS

Definitions.....	1
Introduction.....	2
Methods.....	2
Results.....	3
Harvest by species.....	11
Badger.....	12
Beaver.....	16
Bobcat.....	19
Coyote.....	29
Gray fox.....	33
Kit fox.....	36
Marten.....	38
Mink.....	41
Muskrat.....	43
Raccoon.....	46
Red fox.....	49
Ringtail.....	53
Spotted skunk.....	55
Striped skunk.....	57
Weasel.....	60
Appendix: Utah furbearer management ecoregions.....	62

DEFINITIONS

Incidental harvest: Furbearers harvested in traps that were intended for a different furbearer species.

Trap year: Time frame corresponding to the 2018–19 furbearer seasons, as outlined in the 2018–19 Utah Furbearer Guidebook.

Trappers afield: Number of furbearer license holders who trapped furbearers during a particular trap year. License holders who took furbearers by means other than trapping, including shooting or with the aid of dogs, are included in this figure except for bobcat.

Total harvest: Number of furbearers of a particular species taken by means of trapping and hunting by furbearer license holders. This figure does not include harvest of unprotected wildlife, such as coyote, muskrat, red fox, raccoon, or striped skunk, taken by persons who did not purchase a furbearer license, nor does it include harvest of furbearers taken for creating a nuisance or causing damage.

Total set-days: Number of traps set during the furbearer season for the trapping of a particular species, multiplied by the number of days these traps were in the field. This figure pertains only to trapping, and does not include days afield by furbearer hunters or pursuers.

Pelt price: Average price paid for pelts of a specific furbearer species harvested in Utah, obtained mainly from a summary of the prices bid at the Utah Trappers Association fur auction, as well as prices from a survey of registered furdealers buying pelts harvested in Utah.

Wildlife Services harvest (coyote only): Number of coyotes taken by USDA-APHIS Wildlife Services in a particular year. Prior to 2006–07, Wildlife Services yearly harvest summaries applied to their fiscal year, which begins October 1 and ends September 30, although most harvest takes place during spring. Beginning in 2006–07, Wildlife Services harvest is reported for the period July 1 to June 30 of the following year.

INTRODUCTION

The furbearer harvest report presents furbearer harvest and trapper/hunter effort trends across the state of Utah, based on data collected from furbearer trappers and hunters. This report represents the furbearer portion of the Annual Performance Report for Federal Aid Project W-65-M, segment 67, grant agreement period July 1, 2018 through June 30, 2019. This Federal Aid project covers the 2018–19 trapping seasons. Additionally this report presents statewide trends since the early 1980s and population trend indicators for bobcats as well as the estimated economic value of Utah’s furbearer harvest each year. Furbearer harvest and trapper/hunter effort may have been more driven by pelt price than by availability, so annual fur harvest should not be used as the sole means to assess/project population sizes.

Furbearers included badger, beaver, bobcat, gray fox, kit fox, mink, marten, ringtail, spotted skunk, and weasel. A furbearer license was required to harvest any of these species, and additional permits were required to harvest bobcats and martens. There were no bag limits for furbearers, except bobcats. Each bobcat permit allowed a person to harvest one bobcat, and a single person could obtain up to 6 bobcat permits in 2018–19. Sales of bobcat permits were not capped. Season dates for badger, gray fox, kit fox, marten, ringtail, spotted skunk, and weasel were September 22, 2018 through March 1, 2019. Bobcat season was November 14, 2018 through March 1, 2019. Season dates for beaver and mink were September 22, 2018 through April 3, 2019.

Coyote, muskrat, red fox, raccoon, and striped skunk were not under the jurisdiction of the Division, and/or were unprotected. Those species could be taken year round without a license; therefore, results presented in this report do not include harvest by persons who did not purchase a furbearer license. It was prohibited to take black-footed ferret, fisher, lynx, river otter, wolf, and wolverine.

METHODS

Furbearer harvest and effort information was obtained from a telephone/web mixed-mode survey of a statistically-valid random sample of furbearer license holders. The accuracy of that survey was dependent upon the following assumptions: (1) a random sample was achieved (i.e., there was no response bias by those who harvested successfully versus those who did not), (2) respondents recorded or remembered data accurately and did not guess or lie, and (3) respondents clearly understood the questions.

Trappers who harvested bobcats and martens were required to bring the animals’ pelts to a Division office or officer to have permanent tags attached and to surrender the lower jaws. Bobcat and marten harvest data presented in this report, such as county of kill and sex of harvest, were collected at that time; as such, that information was not projected. Additional information on bobcat harvest, such as harvest effort by method, trappers-afield, number of sets, and number of days was determined by the survey mentioned in the preceding paragraph. Due to the small number of marten trappers in Utah, we did not attempt to survey marten trappers. Instead, since a separate permit is required to trap marten, we assumed that all those who purchased a marten permit attempted to trap marten.

To determine age structure of the bobcat harvest, a canine tooth from each bobcat jaw was sectioned, and aged using cementum annuli by Matson's Lab in Manhattan, Montana. Survival rates were estimated using the Chapman-Robson estimator. Pelt prices were obtained mainly from a summary of the prices bid at the Utah Trappers Association fur auction, as well as from a survey of registered furdealers buying pelts harvested in Utah.

Because some furbearer species in Utah were rare or not highly sought after by trappers, it was not possible to achieve sufficient sample sizes for these species to make valid statistical inferences. Although the trends for statewide harvest and effort were still valid, at the county level, the harvest and effort estimates had low precision and were likely inaccurate. As such, results by county were only reported for species with a sample size ≥ 20 .

Corrections and Clarifications

Prior to the 2005–06 season, harvest and effort were not separated out by method, e.g. trapping or hunting. Therefore, trapping harvest estimates included harvest by both trappers and hunters.

In an effort to obtain information on how many furbearers of a given species were taken incidentally, furbearer trappers were asked the question “Did you harvest any [species] in traps that were set for a different species, and, if so, how many?” Prior to 2009–10, all incidental harvest was included in the total harvest and harvest effort statistics. In the 2009–10 and 2010–11 annual reports, incidental harvest was included in statewide summaries of total furbearer harvest, but not in species-specific tables. This omission in 2009–10 and 2010–11 caused some confusion because harvest totals did not match between tables. Furthermore, comparisons of species-specific trapping harvest with prior years' numbers were confounded. This annual report was modified, beginning with the 2011–12 report, to include incidental harvest in species-specific statewide historical harvest tables.

RESULTS

License Sales and General Survey Results

Furbearer licenses were valid for 365 days from the date of purchase. We used the 365-day period of April 1 to March 31 to determine the total number of furbearer licenses sold for the furbearer season. A total of 1,880 furbearer licenses were sold for the 2018–19 season. The percentage of license holders who bought a furbearer license but did not attempt to harvest furbearers was 51%. The number of trappers afield in 2018–19 was 921.

Furbearer Harvest, Historical Trends, and Economic Value

The majority of the harvest taken by furbearer license holders in 2018–19 was of non-protected species—coyote, muskrat, and raccoon. Total harvest of regulated furbearer species (i.e., species with designated trapping seasons) was 4,074 in 2018–19, lower than the 10-yr average of 5,523. The estimated economic value of Utah's furbearer harvest in 2018–19 was \$919,256.

Furbearer license sales and survey responses, Utah 1982–2019.

Trap year	Furbearer licenses sold			License holders surveyed		Projection factor	% license holders not afield
	Resident	Nonresident	Total	Total	Percent (%)		
1982–83	—	—	1325	664	50.1	—	—
1983–84	—	—	1367	616	45.1	—	—
1984–85	—	—	1491	806	54.1	—	—
1985–86	—	—	1424	680	47.8	—	—
1986–87	—	—	1342	585	43.6	—	—
1987–88	—	—	1576	731	46.4	—	—
1988–89	—	—	1318	721	54.7	—	—
1989–90	—	—	1084	597	55.1	—	—
1990–91	—	—	949	513	54.1	—	30.0
1991–92	—	—	1210	689	56.9	—	2.2
1992–93	—	—	1426	857	60.1	—	16.0
1993–94	—	—	1315	—	—	—	—
1994–95	—	—	1287	585	45.5	—	7.0
1995–96	—	—	1240	683	55.1	—	21.2
1996–97	—	—	1131	606	53.6	—	25.4
1997–98	—	—	1190	498	41.8	—	19.5
1998–99	—	—	1191	395	33.2	—	19.8
1999–00	1172	39	1211	458	37.8	2.6	11.6
2000–01	1204	20	1224	420	34.3	2.9	12.4
2001–02	956	21	977	302	30.9	3.2	11.6
2002–03	1409	40	1449	514	35.5	2.8	16.3
2003–04	1729	47	1776	597	33.6	3.0	16.9
2004–05	1830	65	1895	615	32.5	3.1	18.2
2005–06	1631	57	1688	260	15.4	6.5	27.7
2006–07	2029	81	2110	262	12.4	8.1	26.7
2007–08	2085	55	2140	563	26.3	3.8	31.8
2008–09	2045	57	2102	750	35.7	2.8	34.8
2009–10	1902	34	1936	798	41.2	2.4	30.2
2010–11	1788	29	1817	555	30.5	3.3	30.1
2011–12	1856	36	1892	531	28.1	3.6	33.3
2012–13	2080	52	2132	622	29.2	3.4	34.4
2013–14	2389	60	2449	726	29.6	3.4	35.4
2014–15	2802	67	2869	907	31.6	3.2	41.1
2015–16	2580	52	2632	714	27.1	3.7	35.6
2016–17	2078	54	2132	815	38.2	2.6	31.2
2017–18	1972	54	2026	864	42.6	2.3	44.1
2018–19	1836	44	1880	866	46.1	2.2	51.0
Average	1869	48	1627	621	39.9	2.8	25.6

Statewide total furbearer harvest* estimates by species, Utah 2009–2019.

Species	Trap year										Average 2009–19
	2009–10	2010–11	2011–12	2012–13	2013–14	2014–15	2015–16	2016–17	2017–18	2018–19	
Badger	334	309	217	302	371	417	648	486	297	369	375
Beaver	1910	1052	1026	2276	2021	1388	1511	973	945	741	1384
Bobcat	1167	1002	1245	1365	1870	2919	1683	1856	2954	1652	1771
Coyote	6674	8128	5296	5749	5784	6873	8001	5124	5259	3590	6048
Gray fox	1392	907	1002	1288	1318	1015	1106	625	1067	669	1039
Kit fox	51	45	110	373	14	145	99	154	44	13	105
Marten	2	36	14	26	16	22	9	2	15	11	15
Mink	395	636	221	867	1012	341	188	246	272	246	442
Muskrat	5505	7698	8266	13650	8764	6092	6175	3163	7265	3491	7007
Raccoon	5018	5946	4141	6239	5482	5437	4748	3628	5321	2660	4862
Red fox	2657	2864	2273	2056	2517	2272	1880	1625	1503	981	2063
Ringtail	109	62	28	62	101	64	70	102	160	22	78
Spotted skunk	116	276	264	154	240	399	380	113	209	184	234
Striped skunk	3270	2733	1679	2465	1970	1875	2211	1250	2490	1564	2151
Weasel	60	37	25	131	13	76	30	236	21	167	80

*Total harvest includes incidental take.

Statewide furbearer trapping harvest statistics* by species, Utah 2018–19.

Species	Trappers afield	Trap harvest	Set-days	Set-days / furbearer	Furbearers / 1000 set-days	Furbearers / trapper	Pelt price (\$)
Badger	37	161	16288	101.4	9.9	4.4	9.30
Beaver	102	645	11860	18.4	54.4	6.3	—
Bobcat	796	1372	611330	445.6	2.2	1.7	388.43
Coyote	313	1728	291378	168.6	5.9	5.5	56.31
Gray fox	78	330	49688	150.6	6.6	4.2	12.36
Kit fox	7	0	10103	—	0.0	0.0	8.91
Marten	188	11	—	—	—	0.1	—
Mink	28	219	7407	33.8	29.6	7.8	2.00
Muskrat	67	3465	86812	25.1	39.9	51.5	3.15
Raccoon	113	1798	85421	47.5	21.0	15.9	6.49
Red fox	128	627	112392	179.1	5.6	4.9	15.92
Ringtail	11	15	3365	221.4	4.5	1.4	10.36
Spotted skunk	15	69	2840	40.9	24.5	4.6	—
Striped skunk	54	1052	94465	89.8	11.1	19.4	12.15
Weasel	9	139	3760	27.1	37.0	16.0	—

*Does not include incidental harvest.

Statewide furbearer hunting harvest by species, Utah 2018–19.

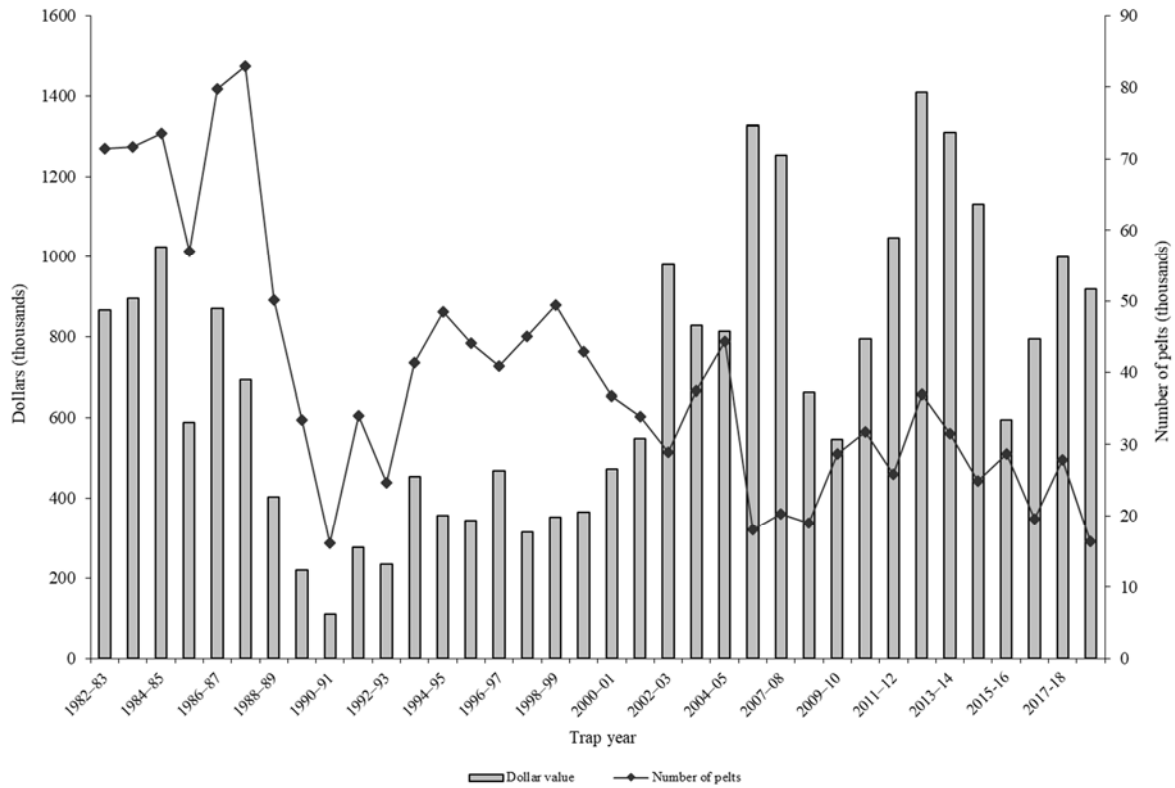
Species	Hunters afield	Hunt harvest	Hunting days	Days / furbearer	Furbearers / hunter
Badger	48	93	267	2.9	2.0
Beaver	11	87	135	1.6	8.0
Bobcat	211	280	2832	10.1	1.3
Coyote	265	1636	8091	4.9	6.2
Gray fox	11	11	28	2.6	1.0
Kit fox	0	—	—	—	—
Mink	4	7	35	5.3	1.5
Muskrat	4	2	17	8.0	0.5
Raccoon	30	376	432	1.2	12.4
Red fox	48	102	740	7.3	2.1
Ringtail	2	7	22	3.3	3.0
Spotted skunk	0	—	—	—	—
Striped skunk	9	82	208	2.5	9.5
Weasel	2	2	2	1.0	1.0

Number of furbearers harvested in traps set for other species, Utah 2018–19.

Species	Incidental harvest	Trap / hunt harvest	Total harvest	% incidental harvest
Badger	115	254	369	31.2
Beaver	9	732	741	1.2
Bobcat	25	1652*	1652	1.5
Coyote	226	3364	3590	6.3
Gray fox	328	341	669	49.0
Kit fox	13	0	13	100.0
Marten	0	11	11	0.0
Mink	20	226	246	8.1
Muskrat	24	3467	3491	0.7
Raccoon	486	2174	2660	18.3
Red fox	252	729	981	25.7
Ringtail	0	22	22	0.0
Spotted skunk	115	69	184	62.5
Striped skunk	430	1134	1564	27.5
Weasel	26	141	167	15.6
Total	2069	14316	16360	12.6

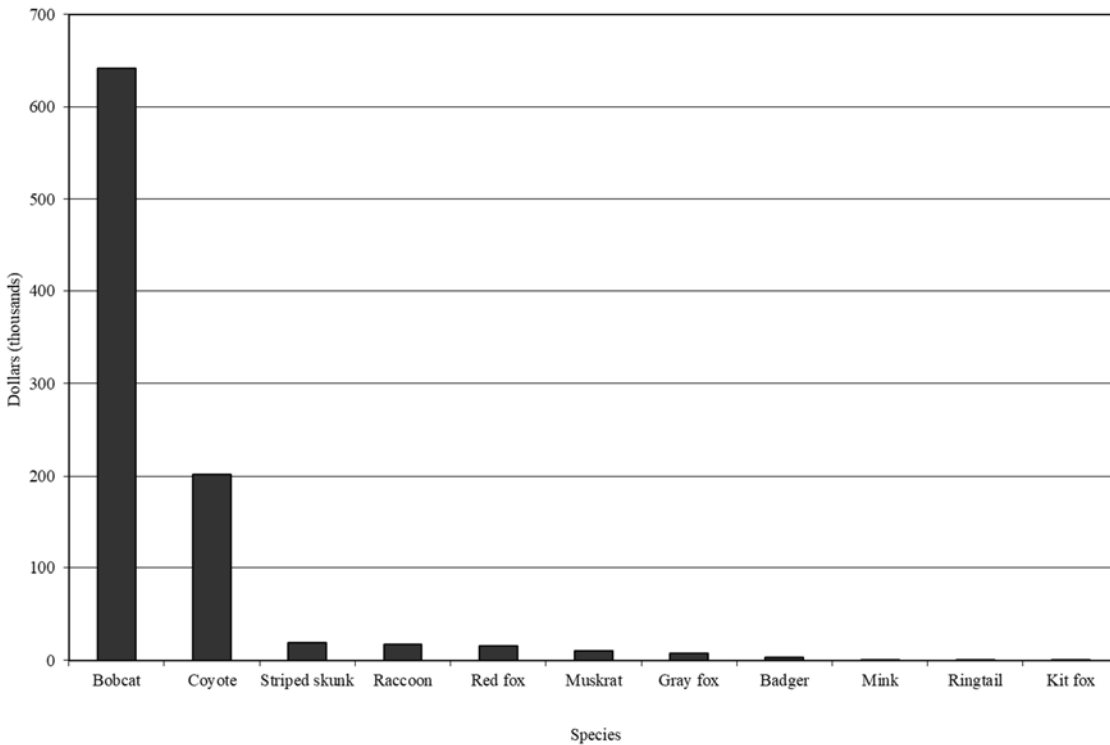
*Incidental bobcat harvest is accounted for in trap harvest.

Estimated economic value of the furbearer harvest taken by trappers in Utah, 1982–2019.



*No data available for 2007.

Proportional economic value of the furbearer harvest taken by trappers in Utah, by species, 2018–19.



Economic value* (in dollars) of furbearer species in Utah's annual furbearer harvest, Utah 1982–2019.

Trap year	Species														Total economic value (\$)
	Badger	Beaver	Bobcat	Coyote	Gray fox	Kit fox	Marten	Mink	Muskrat	Raccoon	Red fox	Ringtail	Skunk	Weasel	
1982–83	5945	20418	434340	203240	37352	7244	10	4394	119096	10526	16391	1430	4620	59	865064
1983–84	4794	25211	498960	152358	34353	8369	1680	3460	136033	11105	14869	1497	3597	0	896285
1984–85	6794	43796	511464	193809	48147	7272	288	4948	133589	18208	32220	794	22126	56	1023511
1985–86	1964	47463	301410	95322	21147	4568	2783	5022	72903	13751	21386	433	0	0	588152
1986–87	3239	93684	316416	166417	36848	5415	565	8802	157919	30439	49262	746	0	185	869938
1987–88	2772	69184	250635	107590	35779	5751	2000	12703	144058	24645	34765	643	2524	250	693300
1988–89	1943	27264	230282	27104	14837	4488	310	9129	46760	23932	16070	1060	290	23	403492
1989–90	1749	40991	85986	28913	5825	1164	0	7018	15039	14242	17550	350	387	8	219223
1990–91	1250	10066	45849	20892	2060	869	0	3437	6463	5375	12636	347	194	9	109446
1991–92	2015	13338	100672	65100	2762	520	0	4924	31275	10729	39194	708	4148	6	275390
1992–93	2308	7399	105390	57740	2988	821	0	2850	13715	4757	31635	425	4887	8	234924
1993–94	1709	16888	148962	128971	8244	1412	0	3970	42502	15768	74511	259	10768	158	454120
1994–95	4555	32270	90536	65890	7417	3425	0	2933	49362	18332	67159	1019	13359	20	356277
1995–96	2904	20502	71241	67722	8818	1363	0	5502	54883	23516	74399	947	11622	613	344032
1996–97	2888	27474	127995	75238	4257	1097	0	2946	83902	56444	74710	537	10356	96	467939
1997–98	1786	39328	75138	34862	3019	336	0	1958	54083	49790	42345	170	11878	85	314778
1998–99	5393	27642	116859	46840	6055	1228	43	2453	37878	38437	50120	575	18297	182	352002
1999–00	5646	20093	118175	67181	6124	531	0	2543	21086	30147	69531	710	23205	—	364973
2000–01	7731	20557	187868	71461	9272	987	—	2303	16394	29298	90184	708	33517	1318	471598
2001–02	4290	18326	275534	70404	15355	1833	—	1477	38945	30431	78140	1039	12208	—	547983
2002–03	7428	16288	588238	177649	24217	1643	—	555	10071	22486	124008	598	7344	14	980538
2003–04	8480	25112	411826	171428	18959	3432	0	5384	16920	59889	83827	656	23050	0	828964
2004–05	5901	37056	433104	144177	13009	2326	0	2847	23575	41889	88152	1412	19785	247	813480
2005–06	1802	39742	1049147	128773	14562	1998	—	2213	3271	32419	45632	959	6374	—	1326894
2007–08	4970	13037	946596	166006	42838	307	—	1736	5067	43288	24200	1604	4375	45	1254069

*Economic value was determined by multiplying average pelt price by total harvest for a given species.

Species with missing values contributed to Utah's annual furbearer harvest but were not included in the economic value estimate due to missing average pelt price or harvest data. No data was available for 2006–07. From 2001 to 2005, average striped skunk pelt price was used to calculate all skunk (spotted and striped) economic value.

Economic value* (in dollars) of furbearer species in Utah's annual furbearer harvest, Utah 1982–2019 (continued).

Trap year	Species														Total economic value (\$)
	Badger	Beaver	Bobcat	Coyote	Gray fox	Kit fox	Marten	Mink	Muskrat	Raccoon	Red fox	Ringtail	Skunk	Weasel	
2008–09	4996	15319	492186	75399	29816	791	—	1442	2988	14713	15676	631	7256	—	661214
2009–10	6458	22160	261073	98766	23047	483	—	3160	27148	35589	43366	1635	22895	458	546238
2010–11	5338	13421	369686	203226	19019	571	972	7170	41555	48575	64790	1173	18607	267	794368
2011–12	4435	16017	567920	230005	23177	1594	550	3333	60140	32162	96534	342	9823	114	1046146
2012–13	5225	46112	765710	227430	40152	5360	1462	16629	110710	87845	87380	971	14580	—	1409567
2013–14	5834	28951	761918	216267	31870	200	519	16406	76492	52102	101665	1809	16949	65	1311048
2014–15	4875	16101	651258	315333	16402	1034	483	2922	22906	29686	55210	1105	13173	296	1130784
2015–16	4944	11272	255193	237070	11890	647	—	793	11671	19467	28896	879	12043	92	594857
2016–17	4996	10898	507115	190920	9638	1589	—	1850	11956	17850	26260	2394	8060	838	794364
2017–18	1933	5991	698473	196213	9582	290	330	816	21141	20858	21989	3330	17146	21	998115
2018–19	3432	—	641686	202153	8269	116	—	492	10997	17263	15618	228	19003	—	919256
Average	4242	26839	374857	131330	17975	2252	461	4459	48125	28777	50841	948	11346	184	701731

*Economic value was determined by multiplying average pelt price by total harvest for a given species.

Species with missing values contributed to Utah's annual furbearer harvest but were not included in the economic value estimate due to missing average pelt price or harvest data.

HARVEST BY SPECIES

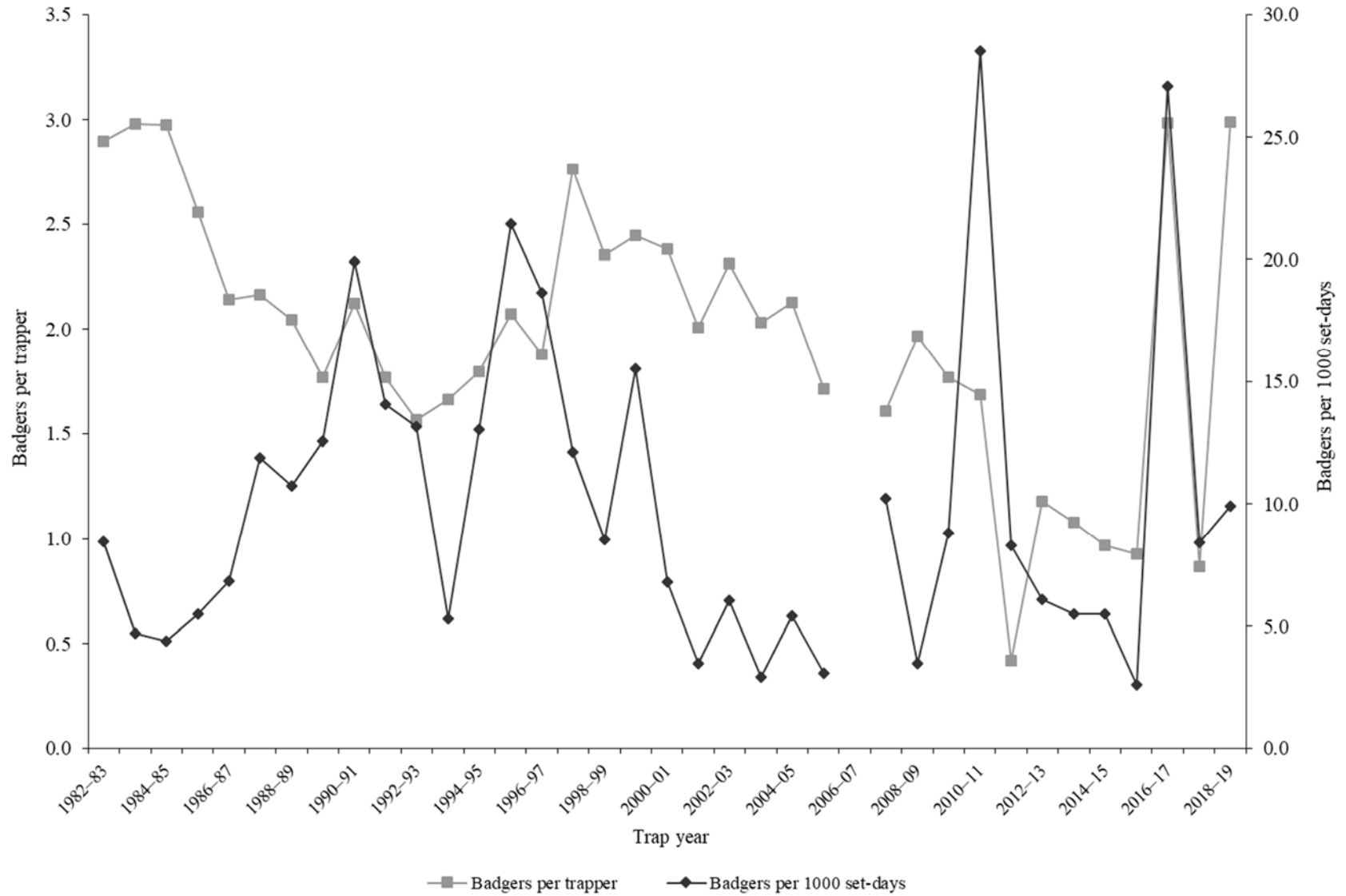
BADGER

Statewide badger harvest statistics*, Utah 1982–2019.

Trap year	Trappers afield	Incidental harvest	Trap harvest	Hunt harvest	Set-days / badger	Badgers / 1000 set-days	Badgers / trapper	Pelt price (\$)
1982–83	250	—	725	—	118	8.5	2.9	8.20
1983–84	188	—	560	—	212	4.7	3.0	8.56
1984–85	225	—	670	—	227	4.4	3.0	10.14
1985–86	194	—	496	—	182	5.5	2.6	3.96
1986–87	198	—	424	—	146	6.8	2.1	7.64
1987–88	212	—	459	—	84	11.9	2.2	6.04
1988–89	204	—	417	—	93	10.7	2.0	4.66
1989–90	207	—	366	—	80	12.5	1.8	4.78
1990–91	81	—	172	—	50	19.9	2.1	7.27
1991–92	134	—	237	—	71	14.1	1.8	8.50
1992–93	148	—	232	—	76	13.2	1.6	9.95
1993–94	143	—	238	—	188	5.3	1.7	7.18
1994–95	182	—	327	—	77	13.0	1.8	13.93
1995–96	133	—	276	—	47	21.4	2.1	10.52
1996–97	118	—	222	—	54	18.7	1.9	13.01
1997–98	98	—	271	—	83	12.1	2.7	6.59
1998–99	135	—	318	—	117	8.5	2.4	16.96
1999–00	177	—	433	—	64	15.5	2.4	13.04
2000–01	189	—	450	—	147	6.8	2.4	17.18
2001–02	137	—	275	—	288	3.5	2.0	15.60
2002–03	234	—	541	—	165	6.0	2.3	13.73
2003–04	223	—	453	—	341	2.9	2.0	18.72
2004–05	203	—	432	—	184	5.4	2.1	13.66
2005–06	70	—	120	—	324	3.1	1.7	15.02
2006–07	187	—	—	—	—	—	—	18.07
2007–08	171	—	275	—	98	10.2	1.6	14.14
2008–09	146	—	287	—	282	3.5	2.0	17.41
2009–10	78	196	138	—	113	8.8	1.8	19.34
2010–11	115	115	194	—	35	28.5	1.7	17.27
2011–12	110	82	46	89	120	8.3	0.4	20.44
2012–13	99	147	117	38	163	6.1	1.2	17.36
2013–14	91	216	98	57	180	5.5	1.1	15.73
2014–15	92	297	89	32	183	5.5	1.0	11.69
2015–16	103	464	140	44	384	2.6	0.9	7.63
2016–17	78	222	233	31	37	27.1	3.0	10.28
2017–18	91	145	79	68	119	8.4	0.9	6.51
2018–19	85	115	161	93	101	9.9	3.0	9.30
Average	151	200	305	57	145	10.0	2.0	11.89

*Trappers and badgers per trapper include hunters and their harvest. Set-days per badger and badgers per 1000 set-days are based only on trapping activity, and do not include hunt harvest or hunter-days afield.

Statewide badger harvest trends, Utah 1982–2019.



Badger trapping harvest statistics by county and ecoregion, Utah 2018–19.

County	n	Trappers afield	Trap harvest	Traps set	Trapping days	Set-days	Set-days / badger	Badgers / 1000 set-days	Badgers / trapper
Beaver	0	0	—	—	—	—	—	—	—
Box Elder	2	4	28	46	113	1639	58	17.2	6.5
Iron	1	2	2	24	4	48	22	45.5	1.0
Juab	1	2	39	22	76	760	19	51.4	18.0
Millard	1	2	2	2	2	2	1	1000.0	1.0
Tooele	2	4	39	59	206	2323	59	16.8	9.0
Great Basin totals	7	15	111	152	402	4772	43	23.2	7.3
Cache	3	7	17	76	111	2075	120	8.4	2.7
Davis	0	0	—	—	—	—	—	—	—
Morgan	0	0	—	—	—	—	—	—	—
Piute	0	0	—	—	—	—	—	—	—
Rich	0	0	—	—	—	—	—	—	—
Salt Lake	0	0	—	—	—	—	—	—	—
Sanpete	2	4	15	26	67	593	39	25.6	3.5
Sevier	0	0	—	—	—	—	—	—	—
Summit	1	2	2	2	15	15	7	142.9	1.0
Utah	2	4	9	98	271	7001	806	1.2	2.0
Wasatch	0	0	—	—	—	—	—	—	—
Weber	0	0	—	—	—	—	—	—	—
Rocky Mountain totals	8	17	43	202	465	9684	223	4.5	2.5
Daggett	0	0	—	—	—	—	—	—	—
Duchesne	1	2	2	13	130	782	360	2.8	1.0
Uintah	1	2	2	46	46	957	441	2.3	1.0
Uintah Basin totals	2	4	4	59	176	1739	401	2.5	1.0
Carbon	0	0	—	—	—	—	—	—	—
Emery	0	0	—	—	—	—	—	—	—
Garfield	1	2	2	9	22	87	40	25.0	1.0
Grand	0	0	—	—	—	—	—	—	—
Kane	1	2	0	2	7	7	—	0.0	0.0
San Juan	0	0	—	—	—	—	—	—	—
Washington	0	0	—	—	—	—	—	—	—
Wayne	0	0	—	—	—	—	—	—	—
Colorado Plateau totals	2	4	2	11	28	93	43	23.3	0.5
Unknown	0	0	—	—	—	—	—	—	—
Statewide totals*	17	37	161	423	1070	16288	101	9.9	4.4

*Statewide totals for sample size and trappers afield are not totals of the columns because trappers trapped multiple counties.

Badger hunting harvest statistics by county and ecoregion, Utah 2018–19.

County	n	Hunters afield	Hunt harvest	Hunter-days afield	Hunter-days / badger	Badgers / hunter
Beaver	2	4	13	24	1.8	3.0
Box Elder	3	7	7	20	3.0	1.0
Iron	0	0	—	—	—	—
Juab	1	2	4	2	0.5	2.0
Millard	3	7	7	7	1.0	1.0
Tooele	3	7	7	35	5.3	1.0
Great Basin totals	12	26	37	87	2.4	1.4
Cache	0	0	—	—	—	—
Davis	0	0	—	—	—	—
Morgan	0	0	—	—	—	—
Piute	1	2	0	2	—	0.0
Rich	1	2	0	4	—	0.0
Salt Lake	0	0	—	—	—	—
Sanpete	3	7	17	33	1.9	2.7
Sevier	2	4	11	15	1.4	2.5
Summit	2	4	7	7	1.0	1.5
Utah	0	0	—	—	—	—
Wasatch	0	0	—	—	—	—
Weber	0	0	—	—	—	—
Rocky Mountain totals	9	20	35	61	1.8	1.8
Daggett	0	0	—	—	—	—
Duchesne	0	0	—	—	—	—
Uintah	3	7	15	113	7.4	2.3
Uintah Basin totals	3	7	15	113	7.4	2.3
Carbon	0	0	—	—	—	—
Emery	2	4	7	7	1.0	1.5
Garfield	0	0	—	—	—	—
Grand	0	0	—	—	—	—
Kane	0	0	—	—	—	—
San Juan	0	0	—	—	—	—
Washington	0	0	—	—	—	—
Wayne	0	0	—	—	—	—
Colorado Plateau totals	2	4	7	7	1.0	1.5
Unknown	0	0	—	—	—	—
Statewide totals*	22	48	93	267	2.9	2.0

*Statewide totals for sample size and hunters afield are not totals of the columns because hunters hunted multiple counties.

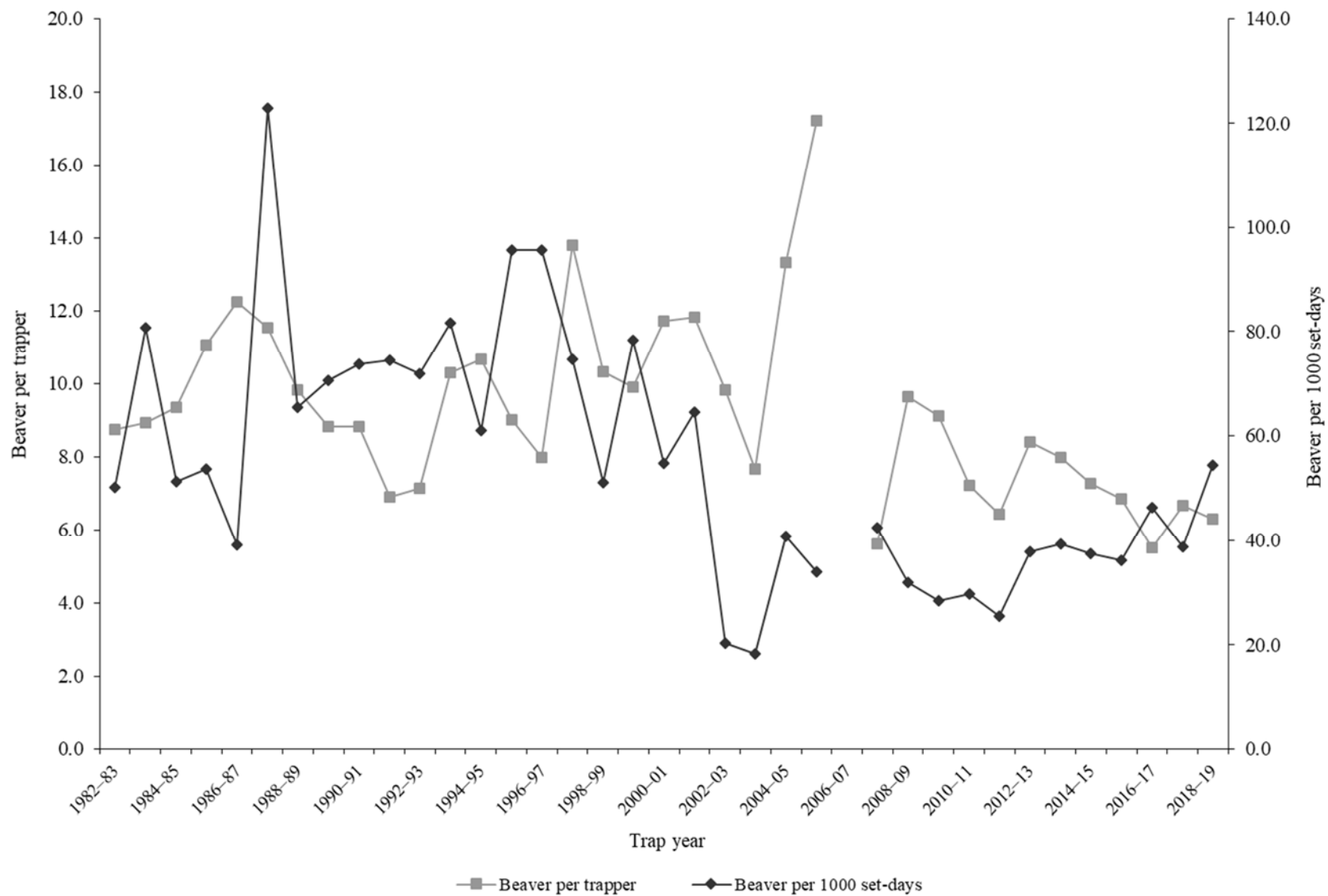
BEAVER

Statewide beaver harvest statistics*, Utah 1982–2019.

Trap year	Trappers afield	Incidental harvest	Trap harvest	Hunt harvest	Set-days / beaver	Beavers / 1000 set-days	Beavers / trapper	Pelt price (\$)
1982–83	181	—	1584	—	20	50.1	8.8	12.89
1983–84	200	—	1788	—	12	80.8	8.9	14.10
1984–85	285	—	2664	—	20	51.3	9.3	16.44
1985–86	293	—	3242	—	19	53.7	11.1	14.64
1986–87	338	—	4138	—	26	39.2	12.2	22.64
1987–88	409	—	4716	—	8	122.9	11.5	14.67
1988–89	277	—	2721	—	15	65.4	9.8	10.02
1989–90	390	—	3436	—	14	70.5	8.8	11.93
1990–91	176	—	1551	—	14	73.8	8.8	6.49
1991–92	216	—	1492	—	13	74.5	6.9	8.94
1992–93	134	—	956	—	14	71.9	7.1	7.74
1993–94	171	—	1761	—	12	81.6	10.3	9.59
1994–95	239	—	2551	—	16	61.0	10.7	12.65
1995–96	170	—	1530	—	10	95.7	9.0	13.40
1996–97	163	—	1299	—	10	95.7	8.0	21.15
1997–98	210	—	2896	—	13	74.6	13.8	13.58
1998–99	286	—	2950	—	20	51.0	10.3	9.37
1999–00	185	—	1830	—	13	78.4	9.9	10.98
2000–01	170	—	1992	—	18	54.7	11.7	10.32
2001–02	143	—	1689	—	16	64.5	11.8	10.85
2002–03	175	—	1720	—	49	20.3	9.8	9.47
2003–04	232	—	1781	—	55	18.2	7.7	14.10
2004–05	200	—	2664	—	25	40.7	13.3	13.91
2005–06	130	—	2239	—	29	33.9	17.2	17.75
2006–07	122	—	—	—	—	—	—	16.31
2007–08	133	—	745	—	24	42.5	5.6	17.50
2008–09	121	—	1165	—	31	31.9	9.6	13.15
2009–10	209	6	1904	—	35	28.5	9.1	11.60
2010–11	144	13	1039	—	34	29.8	7.2	12.76
2011–12	157	18	1008	—	39	25.4	6.4	15.61
2012–13	267	17	2245	14	26	37.9	8.4	20.26
2013–14	240	98	1913	10	25	39.3	8.0	14.33
2014–15	183	47	1332	9	27	37.5	7.3	11.60
2015–16	217	22	1486	4	28	36.1	6.8	7.46
2016–17	176	3	970	0	22	46.3	5.5	11.20
2017–18	141	5	940	0	26	38.8	6.7	6.34
2018–19	113	9	645	87	18	54.4	6.3	—
Average	205	24	1961	18	22	54.8	9.3	12.94

*Trappers and beavers per trapper include hunters and their harvest. Set-days per beaver and beavers per 1000 set-days are based only on trapping activity, and do not include hunt harvest or hunter-days afield

Statewide beaver harvest trends, Utah 1982–2019.



Beaver trapping harvest statistics by county and ecoregion, Utah 2018–19.

County	n	Trappers afield	Trap harvest	Traps set	Trapping days	Set-days	Set-days / beaver	Beavers / 1000 set-days	Beavers / trapper
Beaver	0	0	—	—	—	—	—	—	—
Box Elder	1	2	4	4	13	26	6	166.7	2.0
Iron	0	0	—	—	—	—	—	—	—
Juab	1	2	0	4	130	261	—	0.0	0.0
Millard	0	0	—	—	—	—	—	—	—
Tooele	1	2	0	7	65	195	—	0.0	0.0
Great Basin totals	3	7	4	15	208	482	111	9.0	0.7
Cache	9	20	124	117	604	4133	33	29.9	6.3
Davis	5	11	46	33	98	263	6	173.6	4.2
Morgan	4	9	117	50	82	593	5	197.8	13.5
Piute	0	0	—	—	—	—	—	—	—
Rich	0	0	—	—	—	—	—	—	—
Salt Lake	1	2	4	7	11	33	8	133.3	2.0
Sanpete	0	0	—	—	—	—	—	—	—
Sevier	1	2	24	9	65	261	11	91.7	11.0
Summit	4	9	43	46	91	434	10	100.0	5.0
Utah	6	13	24	35	91	202	9	118.3	1.8
Wasatch	4	9	65	200	126	2592	40	25.1	7.5
Weber	5	11	74	63	204	1459	20	50.6	6.8
Rocky Mountain totals	39	85	521	558	1372	9969	19	52.3	6.2
Daggett	0	0	—	—	—	—	—	—	—
Duchesne	4	9	35	35	139	556	16	62.5	4.0
Uintah	3	7	35	24	48	148	4	235.3	5.3
Uintah Basin totals	7	15	69	59	187	703	10	98.8	4.6
Carbon	1	2	26	30	2	30	1	857.1	12.0
Emery	1	2	2	2	15	15	7	142.9	1.0
Garfield	2	4	13	48	28	356	27	36.6	3.0
Grand	0	0	—	—	—	—	—	—	—
Kane	0	0	—	—	—	—	—	—	—
San Juan	0	0	—	—	—	—	—	—	—
Washington	1	2	9	15	43	304	35	28.6	4.0
Wayne	0	0	—	—	—	—	—	—	—
Colorado Plateau totals	5	11	50	96	89	706	14	70.8	4.6
Unknown	0	0	—	—	—	—	—	—	—
Statewide totals*	47	102	645	727	1856	11860	18	54.4	6.3

*Statewide totals for sample size and trappers afield are not totals of the columns because trappers trapped multiple counties.

BOBCAT

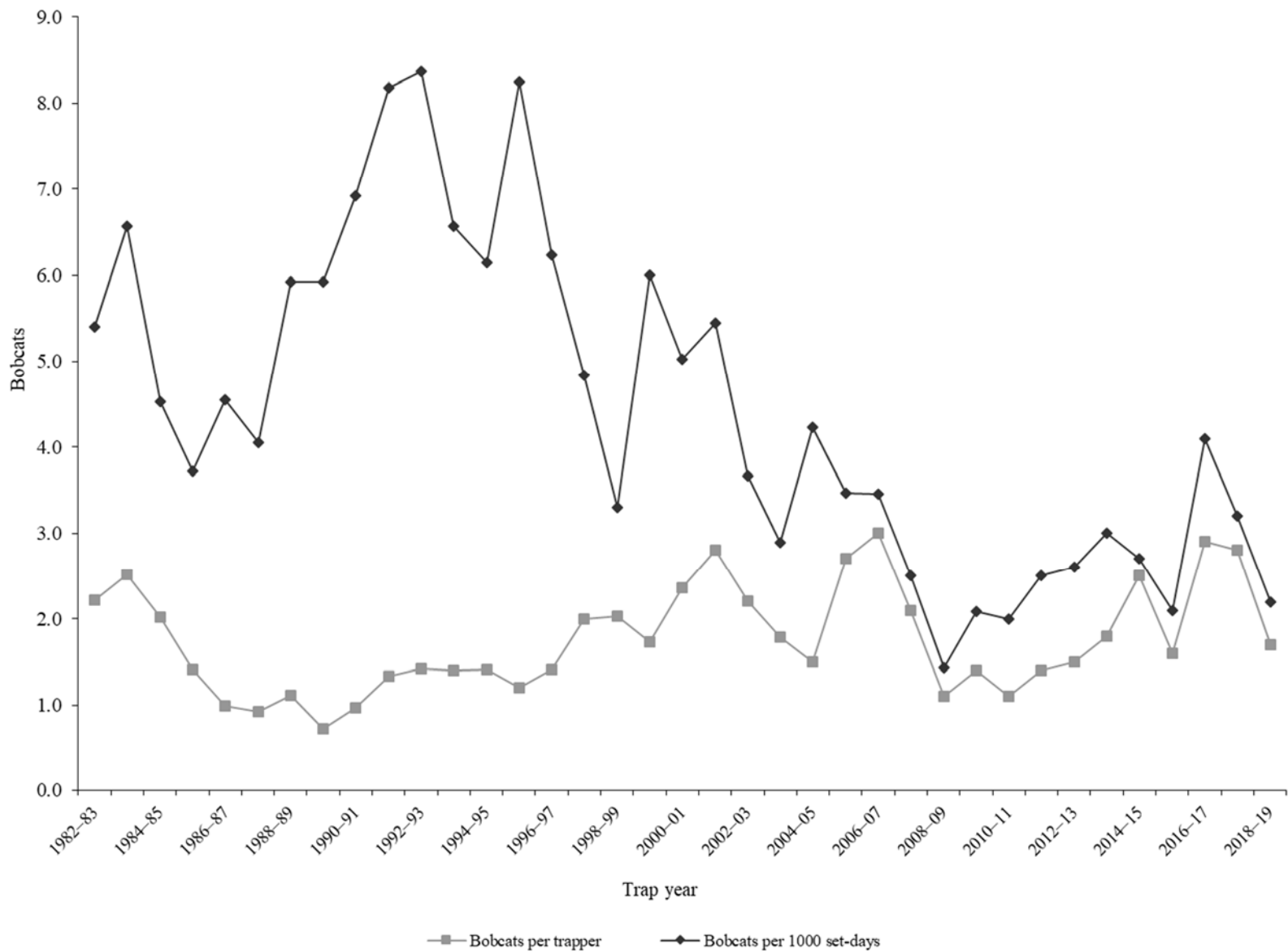
Statewide bobcat trapping harvest statistics, Utah 1982–2019.

Trap year	Trappers afield	Trap harvest	Set-days	Set-days / bobcat	Bobcats / 1000 set-days	Bobcats / trapper	Pelt price (\$)
1982–83	1145	2540	469979	185	5.4	2.2	171.00
1983–84	1050	2640	401841	152	6.6	2.5	189.00
1984–85	1253	2532	559480	221	4.5	2.0	202.00
1985–86	1083	1530	411493	269	3.7	1.4	197.00
1986–87	1036	1024	224778	220	4.6	1.0	309.00
1987–88	1108	1023	252680	247	4.0	0.9	245.00
1988–89	941	1042	175990	169	5.9	1.1	221.00
1989–90	1167	843	142360	169	5.9	0.7	102.00
1990–91	542	527	76218	145	6.9	1.0	87.00
1991–92	726	968	118293	122	8.2	1.3	104.00
1992–93	827	1171	139949	120	8.4	1.4	90.00
1993–94	900	1256	191367	152	6.6	1.4	118.60
1994–95	914	1293	210522	163	6.1	1.4	70.02
1995–96	749	896	108594	121	8.3	1.2	79.51
1996–97	615	866	138899	160	6.2	1.4	147.80
1997–98	619	1234	255147	207	4.8	2.0	60.89
1998–99	1031	2092	633774	303	3.3	2.0	55.86
1999–00	828	1430	238152	167	6.0	1.7	82.64
2000–01	852	2008	399609	199	5.0	2.4	93.56
2001–02	666	1866	342678	184	5.4	2.8	147.66
2002–03	984	2176	593692	273	3.7	2.2	270.33
2003–04	1133	2027	701383	346	2.9	1.8	203.17
2004–05	1300	1954	462019	236	4.2	1.5	221.65
2005–06	979	2625	757380	289	3.5	2.7	358.56
2006–07	1017	3037	877870	289	3.5	3.0	197.53
2007–08	985	2091	836519	400	2.5	2.1	388.43
2008–09	1630	1796	1258813	701	1.4	1.1	238.69
2009–10	717	1017	488709	481	2.1	1.4	223.71
2010–11	771	846	416474	492	2.0	1.1	368.95
2011–12	755	1094	437912	400	2.5	1.4	456.16
2012–13	836	1214	475902	392	2.6	1.5	560.96
2013–14	953	1690	562430	333	3.0	1.8	407.44
2014–15	1105	2776	1036043	373	2.7	2.5	223.11
2015–16	982	1543	739720	479	2.1	1.6	151.63
2016–17	571	1657	402966	243	4.1	2.9	273.23
2017–18	957	2683	833255	311	3.2	2.8	236.45
2018–19	796	1372	611330	446	2.2	1.7	388.43
Average	933	1632	459033	275	4.4	1.8	214.65

Statewide bobcat hunting harvest statistics, Utah 2005–2019.

Trap year	Hunters afield	Hunt harvest	Hunter-days afield	Hunter-days / bobcat	Bobcats / hunter
2005–06	612	301	8194	27	0.5
2006–07	440	340	10408	31	0.8
2007–08	557	346	10089	29	0.6
2008–09	438	266	7360	28	0.6
2009–10	370	150	5253	35	0.4
2010–11	355	156	5888	38	0.4
2011–12	329	151	4146	28	0.5
2012–13	206	151	2739	18	0.7
2013–14	182	180	2901	16	1.0
2014–15	305	143	4203	29	0.5
2015–16	298	140	3819	27	0.5
2016–17	267	199	3446	17	0.7
2017–18	341	262	4620	18	0.8
2018–19	211	280	2832	10	1.3
Average	351	219	5421	25	0.7

Statewide bobcat trapping harvest trends, Utah 1982–2019.



Bobcat trapping harvest statistics by county and ecoregion, Utah 2018–19.

County	n	Trappers afield	Trap harvest**	Traps set	Trapping days	Set-days	Set-days / bobcat	Bobcats / 1000 set-days	Bobcats / trapper
Beaver	7	29	68	1828	379	26037	383	2.6	2.3
Box Elder	5	21	73	779	434	20532	281	3.6	3.5
Iron	12	51	73	1348	623	18047	247	4.0	1.4
Juab	8	34	50	690	270	6646	133	7.5	1.5
Millard	10	42	53	1741	550	24692	466	2.1	1.3
Tooele	11	46	35	1786	573	35083	1002	1.0	0.8
Great Basin totals	53	223	352	8171	2828	131036	372	2.7	1.6
Cache	5	21	8	1011	227	12113	1514	0.7	0.4
Davis	3	13	4	602	118	4953	1238	0.8	0.3
Morgan	6	25	15	1344	451	25931	1729	0.6	0.6
Piute	2	8	15	173	29	687	46	21.8	1.9
Rich	3	13	7	868	194	30981	4426	0.2	0.5
Salt Lake	1	4	4	55	55	712	178	5.6	1.0
Sanpete	8	34	20	1516	459	15107	755	1.3	0.6
Sevier	13	55	62	2337	1150	62375	1006	1.0	1.1
Summit	5	21	24	1106	455	24164	1007	1.0	1.1
Utah	11	46	47	922	505	10912	232	4.3	1.0
Wasatch	3	13	13	438	72	2262	174	5.7	1.0
Weber	3	13	3	135	122	1125	375	2.7	0.2
Rocky Mountain totals	63	265	222	10506	3837	191321	862	1.2	0.8
Daggett	4	17	30	476	190	5564	185	5.4	1.8
Duchesne	19	80	107	4342	922	59825	559	1.8	1.3
Uintah	22	93	157	4241	1322	63503	404	2.5	1.7
Uintah Basin totals	45	190	294	9059	2434	128892	438	2.3	1.5
Carbon	5	21	50	1120	168	10112	202	4.9	2.4
Emery	5	21	44	986	446	13368	304	3.3	2.1
Garfield	11	46	67	1829	623	30560	456	2.2	1.5
Grand	3	13	31	649	126	7278	235	4.3	2.4
Kane	7	29	102	893	240	7071	69	14.4	3.5
San Juan	20	84	104	2653	1141	49437	475	2.1	1.2
Washington	12	51	76	2146	665	35989	474	2.1	1.5
Wayne	3	13	30	687	84	4650	155	6.5	2.3
Colorado Plateau totals	66	278	504	10961	3496	158464	314	3.2	1.8
Unknown	2	8	0	76	152	1617	—	0.0	0.0
Statewide totals*	189	796	1372	38774	12747	611330	446	2.2	1.7

*Statewide totals for sample size and trappers afield are not totals of the columns because trappers trapped multiple counties.

**Total harvest numbers are from pelt check-in, while numbers of trappers afield and effort are determined from harvest survey.

Bobcat hunting harvest statistics by county and ecoregion, Utah 2018–19.

County	n	Hunters afield	Hunt harvest**	Hunter-days afield	Hunter-days / bobcat	Bobcats / hunter
Beaver	0	0	6	—	—	—
Box Elder	7	29	20	211	10.6	0.7
Iron	0	0	16	—	—	—
Juab	3	13	5	97	19.4	0.4
Millard	0	0	7	—	—	—
Tooele	3	13	4	135	33.8	0.3
Great Basin totals	13	55	58	443	7.6	1.1
Cache	6	25	13	476	36.6	0.5
Davis	0	0	—	—	—	—
Morgan	0	0	9	—	—	—
Piute	0	0	—	—	—	—
Rich	3	13	13	135	10.4	1.0
Salt Lake	0	0	—	—	—	—
Sanpete	2	8	15	93	6.2	1.9
Sevier	2	8	7	17	2.4	0.9
Summit	1	4	14	25	1.8	3.5
Utah	4	17	21	59	2.8	1.2
Wasatch	1	4	16	17	1.1	4.0
Weber	0	0	3	—	—	—
Rocky Mountain totals	19	80	111	822	7.4	1.4
Daggett	3	13	2	34	17.0	0.2
Duchesne	3	13	8	135	16.9	0.6
Uintah	10	42	24	847	35.3	0.6
Uintah Basin totals	16	67	34	1016	29.9	0.5
Carbon	0	0	15	—	—	—
Emery	3	13	10	88	8.8	0.8
Garfield	1	4	16	13	0.8	4.0
Grand	3	13	4	84	21.0	0.3
Kane	1	4	4	13	3.3	1.0
San Juan	3	13	20	147	7.4	1.5
Washington	1	4	8	8	1.0	2.0
Wayne	1	4	0	13	—	0.0
Colorado Plateau totals	13	55	77	366	4.8	1.4
Unknown	3	13	0	185	—	0.0
Statewide totals*	50	211	280	2832	10.1	1.3

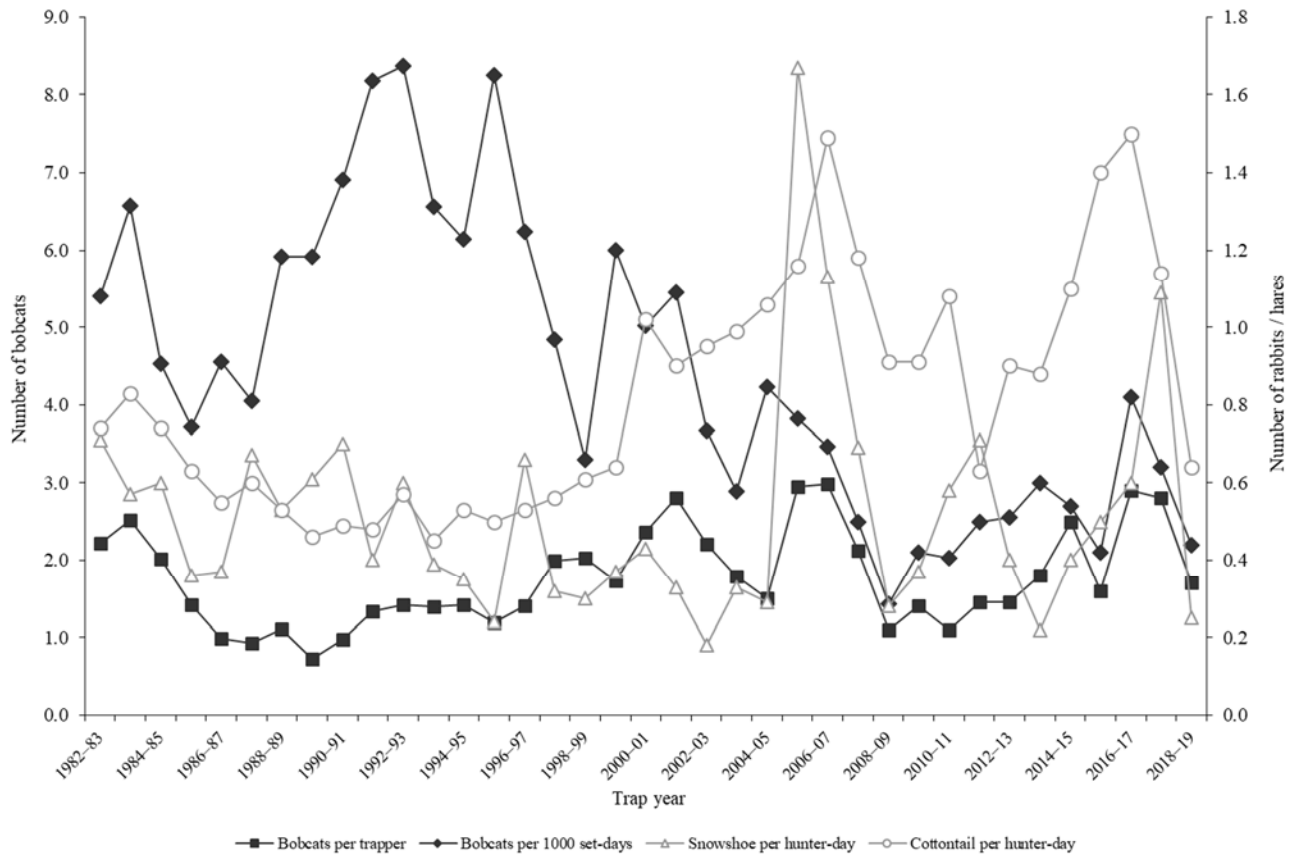
*Statewide totals for sample size and hunters afield are not totals of the columns because hunters hunted multiple counties.

**Total harvest numbers are from pelt check-in, while numbers of hunters afield and effort are determined from harvest survey.

Prey index

Lagomorph densities are generally considered to be a good indicator of bobcat recruitment and survival because high lagomorph populations provide an essential prey base for dispersing bobcats. When lagomorph populations are high or increasing, the bobcat population has also increased or at least remained stable. Thus, low populations of lagomorphs will reduce the likelihood of younger bobcats surviving to the next year. Cottontail rabbit and snowshoe hare data are taken from the Utah Upland Game Annual Report 2018–19 (2018–19 seasons).

Relationships in harvest statistics between bobcat and prey, Utah 1982–2019.



Population trends

Bobcat harvest age and sex ratios, Utah 1985–2019.

Trap year	Kittens / adult female	Kittens / adult	Male kittens / female kittens	Juveniles / adult	Juv. males / juv. females	Proportion juveniles in harvest	Proportion females in harvest	Males / females
1985–86	0.5	0.2	1.0	—	—	—	—	1.2
1986–87	0.7	0.3	0.9	—	—	—	—	1.1
1987–88	1.2	0.5	1.0	—	—	—	—	1.1
1988–89	1.1	0.4	1.1	—	—	—	—	1.3
1989–90	0.8	0.3	1.0	—	—	—	—	1.4
1990–91	0.8	0.3	0.6	—	—	—	—	1.2
1991–92	0.9	0.7	1.3	—	—	—	—	1.5
1992–93	0.9	1.0	1.2	—	—	—	—	1.4
1993–94	1.6	0.6	1.0	—	—	—	—	1.3
1994–95	0.6	0.6	1.1	0.6	1.1	0.36	0.44	1.3
1995–96	1.4	0.5	0.7	0.5	1.0	0.35	0.44	1.3
1996–97	1.9	0.7	1.1	0.7	1.1	0.41	0.41	1.4
1997–98	1.2	0.4	0.9	0.4	0.9	0.30	0.42	1.4
1998–99	2.1	0.8	1.1	—	—	—	—	1.3
1999–00	0.8	0.3	1.0	1.0	1.4	0.50	0.39	1.6
2000–01	0.7	0.3	1.1	0.9	1.3	0.47	0.39	1.6
2001–02	0.4	0.2	1.0	0.6	1.2	0.38	0.41	1.4
2002–03	0.4	0.2	0.9	0.4	1.0	0.28	0.45	1.2
2003–04	0.6	0.3	0.9	0.5	1.0	0.31	0.47	1.1
2004–05	0.8	0.3	0.8	1.2	1.1	0.55	0.44	1.3
2005–06	5.8	2.5	1.4	2.5	1.4	0.72	0.43	1.4
2006–07	4.1	1.5	1.4	1.5	1.4	0.60	0.43	1.3
2007–08	3.0	1.3	1.1	1.4	1.1	0.56	0.43	1.3
2008–09	0.4	0.2	0.8	0.7	1.0	0.42	0.45	1.2
2009–10	0.7	0.3	1.0	0.6	1.2	0.38	0.47	1.1
2010–11	0.6	0.2	1.1	0.5	1.2	0.31	0.43	1.4
2011–12	0.8	0.3	1.1	0.5	1.2	0.35	0.45	1.2
2012–13	0.6	0.3	0.9	0.5	0.9	0.35	0.48	1.1
2013–14	0.9	0.4	0.9	0.8	0.9	0.46	0.45	1.2
2014–15	1.6	0.8	1.0	1.5	1.2	0.60	0.45	1.2
2015–16	1.4	0.6	0.9	1.6	1.4	0.62	0.44	1.3
2016–17	1.4	0.6	0.9	1.8	1.3	0.64	0.41	1.5
2017–18	0.7	0.3	0.7	1.1	1.1	0.52	0.45	1.2
2018–19	0.2	0.1	0.9	0.6	1.2	0.36	0.48	1.1
Average	1.2	0.5	1.0	0.9	1.1	0.45	0.44	1.3

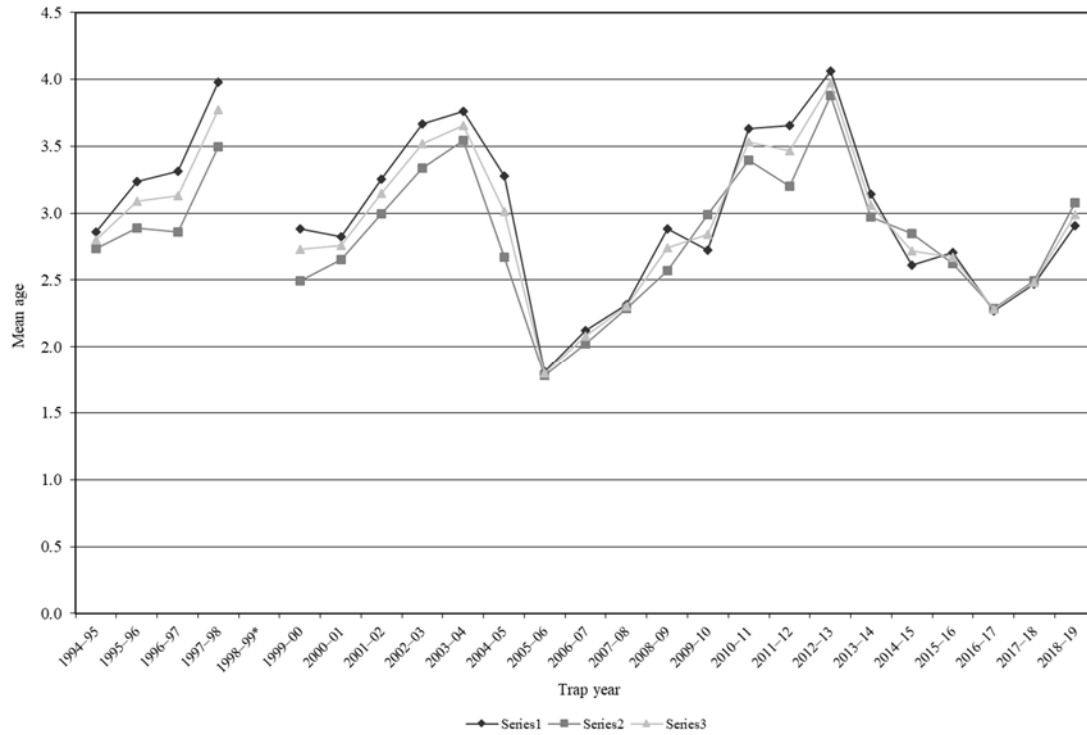
In annual reports prior to 2005–06, the "juvenile" age category referred only to kittens (age 0.5) while "adults" included all bobcats age 1.5 and older. Beginning with the 2005–06 annual report, the term "juvenile" now refers to kittens and yearlings (ages 0.5–1.5), while "adult" includes all bobcats age 2.5 and older.

Adult bobcat survival (from Chapman-Robson estimator), Utah 1985–2019.

Trap year	Survival (%)	95% confidence interval	Chi-square value, degrees of freedom
1985–86	63	60–65	13.2, 9df
1986–87	63	60–65	34.1, 9df
1987–88	65	61–68	19.9, 9df
1988–89	64	60–68	17.3, 8df
1989–90	67	63–71	19.4, 8df
1990–91	58	53–62	28.5, 12df
1991–92	58	55–60	47.9, 14df
1992–93	59	56–63	19.9, 12df
1993–94	54	52–57	34.2, 11df
1994–95	57	54–59	17.2, 14df
1995–96	64	61–66	40.0, 11df
1996–97	68	65–70	23.4, 12df
1997–98	71	69–74	19.1, 14df
1998–99	71	70–73	35.2, 13df
1999–00	66	64–68	41.0, 15df
2000–01	64	62–66	86.0, 11df
2001–02	65	63–67	87.3, 14df
2002–03	67	65–68	175.5, 13df
2003–04	71	70–72	245.6, 12df
2004–05	74	73–76	83.9, 15df
2005–06	68	65–70	15.7, 12df
2006–07	53	48–58	41.9, 9df
2007–08	58	54–62	63.6, 12df
2008–09	57	54–61	64.5, 14df
2009–10	59	56–62	60.1, 12df
2010–11	69	66–71	90.0, 13df
2011–12	70	66–73	22.7, 13df
2012–13	75	72–78	87.2, 11df
2013–14	70	66–74	52.8, 12df
2014–15	74	71–77	62.2, 13df
2015–16	73	70–76	66.6, 13df
2016–17	65	61–68	93.1, 10df
2017–18	57	53–61	89.8, 11df
2018–19	59	55–63	42.8, 12df
Average	65	—	—

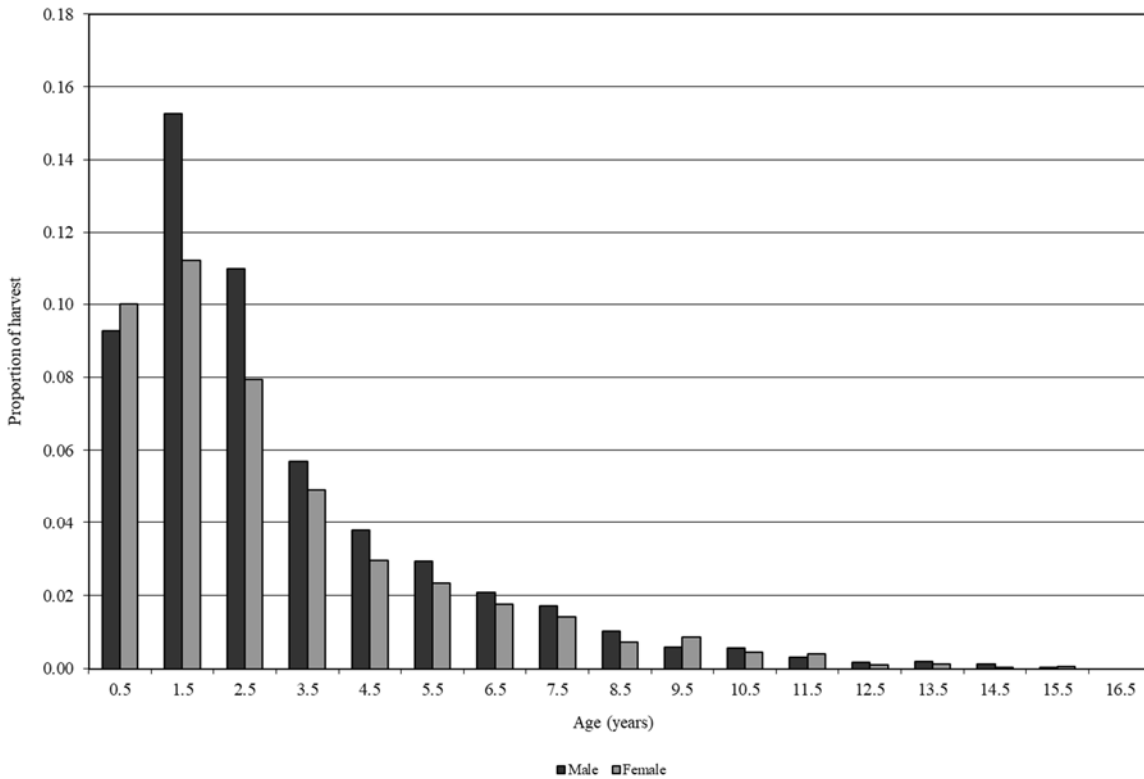
Age structure

Average age of harvested bobcats, Utah 1999–2019.

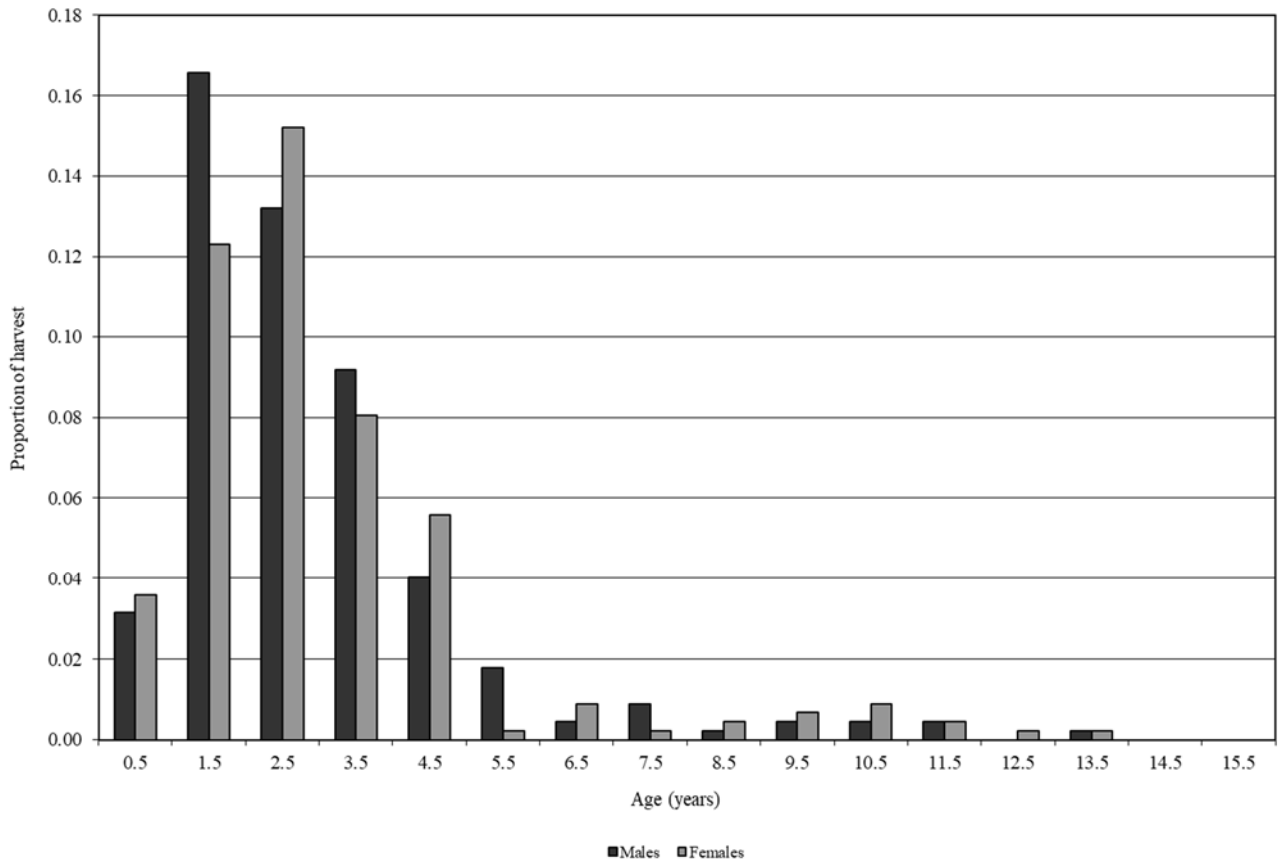


*Excludes age structure data from the 1998–99 trap season.

Average proportion of bobcats harvested by age category, Utah 2008–2019.



Age structure of harvested bobcats, Utah 2018–19.



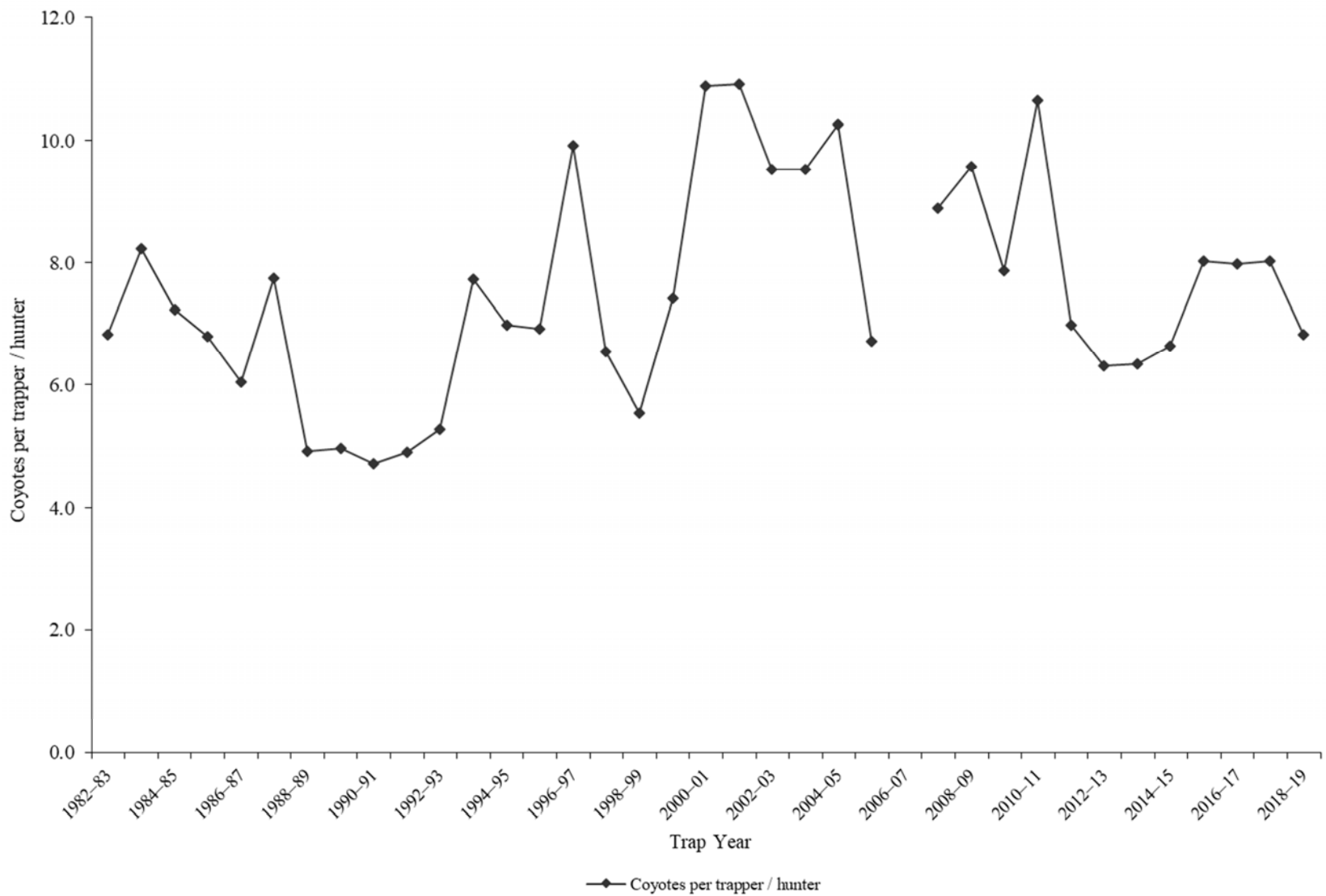
COYOTE

Statewide coyote harvest statistics, Utah 1982–2019.

Trap year	Trappers / hunters afield	Wildlife Services harvest	Incidental harvest	Trap harvest	Hunt harvest	Coyotes per trapper / hunter*	Pelt price (\$)
1982–83	841	4130	—	5738	—	6.8	35.42
1983–84	715	5063	—	5878	—	8.2	25.92
1984–85	828	5427	—	5991	—	7.2	32.35
1985–86	714	5045	—	4851	—	6.8	19.65
1986–87	819	4116	—	4947	—	6.0	33.64
1987–88	893	4338	—	6919	—	7.7	15.55
1988–89	652	4853	—	3200	—	4.9	8.47
1989–90	671	5168	—	3331	—	5.0	8.68
1990–91	389	4444	—	1831	—	4.7	11.41
1991–92	664	4347	—	3255	—	4.9	20.00
1992–93	695	4932	—	3666	—	5.3	15.75
1993–94	679	5827	—	5247	—	7.7	24.58
1994–95	754	3893	—	5267	—	7.0	12.51
1995–96	632	4165	—	4372	—	6.9	15.49
1996–97	405	4484	—	4017	—	9.9	18.73
1997–98	494	4169	—	3228	—	6.5	10.80
1998–99	782	3464	—	4337	—	5.5	10.80
1999–00	473	4534	—	3510	—	7.4	19.14
2000–01	456	4275	—	4966	—	10.9	14.39
2001–02	399	3874	—	4354	—	10.9	16.17
2002–03	572	3394	—	5446	—	9.5	32.62
2003–04	699	3897	—	6660	—	9.5	25.74
2004–05	699	4125	—	7173	—	10.3	20.10
2005–06	630	4820	328	1190	3039	6.7	30.45
2006–07	830	5041	—	—	—	—	26.37
2007–08	859	5618	821	4055	3582	8.9	21.74
2008–09	726	3909	1020	3963	2982	9.6	10.86
2009–10	781	3808	531	3188	2955	7.9	14.80
2010–11	736	4081	292	4356	3480	10.6	25.00
2011–12	705	3444	374	3054	1868	7.0	43.43
2012–13	881	3349	192	3269	2288	6.3	39.56
2013–14	864	2605	312	3162	2310	6.3	37.39
2014–15	971	3099	424	4118	2331	6.6	45.88
2015–16	977	3961	166	4801	3034	8.0	29.63
2016–17	607	3473	285	2244	2595	8.0	37.26
2017–18	635	3024	164	2584	2511	8.0	37.31
2018–19	493	3911	226	1728	1636	6.8	56.31
Average	692	4219	395	4164	2662	7.5	24.43

*Coyotes per trapper / hunter does not include Wildlife Services harvest.

Statewide coyote harvest trends, Utah 1982–2019.



Coyote trapping harvest statistics by county and ecoregion, Utah 2018–19.

County	n	Trappers afield	Trap harvest	Traps set	Trapping days	Set-days	Set-days / coyote	Coyotes / 1000 set-days	Coyotes / trapper
Beaver	10	22	200	276	1001	16642	83	12.0	9.2
Box Elder	10	22	258	508	1665	50008	194	5.2	11.9
Iron	11	24	130	215	992	14575	112	8.9	5.5
Juab	10	22	48	169	758	6478	136	7.4	2.2
Millard	6	13	132	167	458	8901	67	14.9	10.2
Tooele	8	17	30	176	653	8428	277	3.6	1.8
Great Basin totals	55	119	798	1511	5527	105032	131	7.6	6.7
Cache	9	20	115	506	688	29993	261	3.8	5.9
Davis	5	11	13	72	449	2375	182	5.5	1.2
Morgan	1	2	0	22	130	1303	—	0.0	0.0
Piute	1	2	7	11	87	434	67	15.0	3.0
Rich	2	4	82	304	274	20754	252	4.0	19.0
Salt Lake	1	2	7	22	65	651	100	10.0	3.0
Sanpete	5	11	98	91	515	5373	55	18.2	9.0
Sevier	8	17	56	383	519	11539	204	4.9	3.3
Summit	3	7	4	39	147	635	146	6.8	0.7
Utah	7	15	9	61	284	1144	132	7.6	0.6
Wasatch	2	4	0	17	48	230	—	0.0	0.0
Weber	2	4	4	15	180	491	113	8.8	1.0
Rocky Mountain totals	46	100	395	1542	3386	74922	190	5.3	4.0
Daggett	4	9	91	145	369	8388	92	10.9	10.5
Duchesne	6	13	13	200	740	19701	1513	0.7	1.0
Uintah	13	28	35	336	1283	23889	688	1.5	1.2
Uintah Basin totals	23	50	139	682	2392	51978	374	2.7	2.8
Carbon	1	2	0	15	15	106	—	0.0	0.0
Emery	3	7	41	122	421	6113	148	6.7	6.3
Garfield	7	15	56	239	567	12268	217	4.6	3.7
Grand	4	9	54	174	204	4559	84	11.9	6.3
Kane	4	9	35	78	174	1550	45	22.4	4.0
San Juan	13	28	85	432	884	25148	297	3.4	3.0
Washington	12	26	122	195	738	7077	58	17.2	4.7
Wayne	2	4	2	11	838	2468	1137	0.9	0.5
Colorado Plateau totals	46	100	395	1266	3840	59290	150	6.7	4.0
Unknown	1	2	0	52	7	156	—	0.0	0.0
Statewide totals*	144	313	1728	5053	15152	291378	169	5.9	5.5

*Statewide totals for sample size and trappers afield are not totals of the columns because trappers trapped multiple counties.

Coyote hunting harvest statistics by county and ecoregion, Utah 2018–19.

County	n	Hunters afield	Hunt harvest	Hunter-days afield	Hunter-days / coyote	Coyotes / hunter
Beaver	11	24	172	771	4.5	7.2
Box Elder	12	26	200	369	1.8	7.7
Iron	9	20	71	1465	20.8	3.6
Juab	14	30	156	707	4.5	5.1
Millard	8	17	109	504	4.6	6.3
Tooele	11	24	74	221	3.0	3.1
Great Basin totals	65	141	780	4036	5.2	5.5
Cache	9	20	80	165	2.1	4.1
Davis	2	4	4	43	10.0	1.0
Morgan	2	4	2	13	6.0	0.5
Piute	2	4	13	109	8.3	3.0
Rich	6	13	24	117	4.9	1.8
Salt Lake	1	2	0	2	—	0.0
Sanpete	7	15	124	291	2.4	8.1
Sevier	7	15	24	226	9.5	1.6
Summit	1	2	4	13	3.0	2.0
Utah	6	13	20	76	3.9	1.5
Wasatch	2	4	0	28	—	0.0
Weber	1	2	0	2	—	0.0
Rocky Mountain totals	46	100	295	1085	3.7	3.0
Daggett	4	9	54	82	1.5	6.3
Duchesne	7	15	22	237	10.9	1.4
Uintah	15	33	143	634	4.4	4.4
Uintah Basin totals	26	56	219	953	4.3	3.9
Carbon	2	4	0	9	—	0.0
Emery	5	11	28	137	4.8	2.6
Garfield	6	13	17	180	10.4	1.3
Grand	4	9	20	65	3.3	2.3
Kane	4	9	4	54	12.5	0.5
San Juan	10	22	154	389	2.5	7.1
Washington	6	13	54	923	17.0	4.2
Wayne	4	9	28	143	5.1	3.3
Colorado Plateau totals	41	89	306	1900	6.2	3.4
Unknown	5	11	35	117	3.4	3.2
Statewide totals*	122	265	1636	8091	4.9	6.2

*Statewide totals for sample size and hunters afield are not totals of the columns because hunters hunted multiple counties.

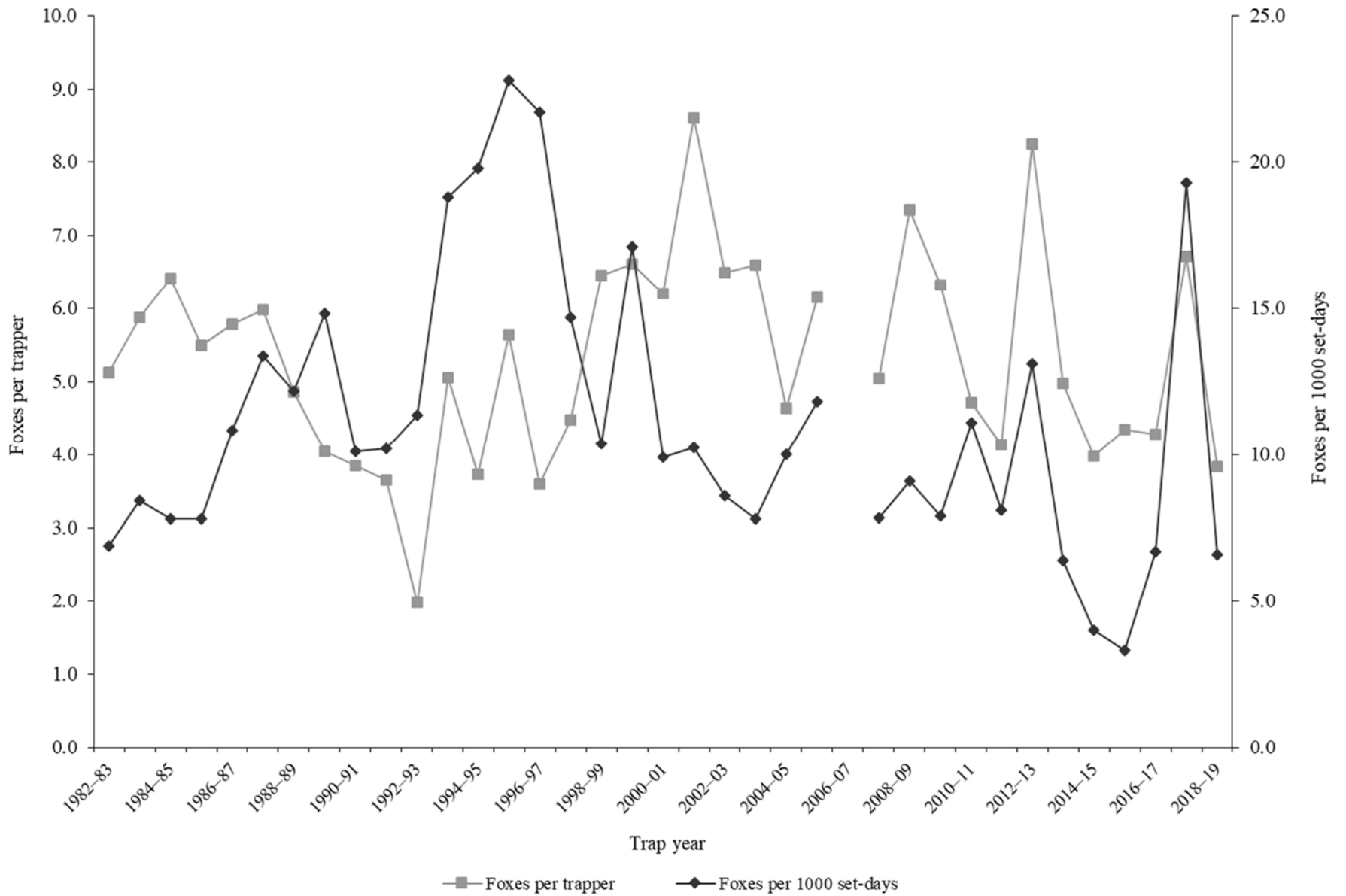
GRAY FOX

Statewide gray fox harvest statistics*, Utah 1982–2019.

Trap year	Trappers afield	Incidental harvest	Trap harvest	Hunt harvest	Set-days / fox	Foxes / 1000 set-days	Foxes / trapper	Pelt price (\$)
1982–83	263	—	1346	—	145	6.9	5.1	27.75
1983–84	233	—	1367	—	119	8.4	5.9	25.13
1984–85	305	—	1954	—	128	7.8	6.4	24.64
1985–86	256	—	1407	—	128	7.8	5.5	15.03
1986–87	252	—	1457	—	92	10.8	5.8	25.29
1987–88	273	—	1633	—	75	13.4	6.0	21.91
1988–89	226	—	1099	—	82	12.2	4.9	13.50
1989–90	233	—	941	—	68	14.8	4.0	6.19
1990–91	65	—	250	—	99	10.1	3.8	8.24
1991–92	110	—	402	—	98	10.2	3.7	6.87
1992–93	214	—	422	—	88	11.4	2.0	7.08
1993–94	136	—	687	—	53	18.8	5.1	12.00
1994–95	207	—	771	—	51	19.8	3.7	9.62
1995–96	147	—	828	—	44	22.8	5.6	10.65
1996–97	102	—	367	—	46	21.7	3.6	11.60
1997–98	87	—	389	—	68	14.7	4.5	7.76
1998–99	135	—	870	—	96	10.4	6.4	6.96
1999–00	140	—	925	—	58	17.1	6.6	6.62
2000–01	187	—	1159	—	101	9.9	6.2	8.00
2001–02	154	—	1326	—	98	10.2	8.6	11.58
2002–03	299	—	1942	—	116	8.6	6.5	12.47
2003–04	265	—	1749	—	128	7.8	6.6	10.84
2004–05	203	—	942	—	100	10.0	4.6	13.81
2005–06	98	—	603	—	85	11.8	6.2	24.15
2006–07	252	—	—	—	—	—	—	37.25
2007–08	217	—	1093	—	127	7.9	5.0	39.19
2008–09	238	—	1747	—	110	9.1	7.3	17.07
2009–10	163	361	1031	—	126	7.9	6.3	16.56
2010–11	138	292	651	—	90	11.1	4.7	20.97
2011–12	125	485	474	43	124	8.1	4.1	23.13
2012–13	130	216	1069	3	77	13.1	8.2	31.15
2013–14	172	462	843	13	155	6.4	5.0	24.18
2014–15	123	525	490	0	249	4.0	4.0	16.16
2015–16	151	450	623	33	299	3.3	4.3	10.75
2016–17	84	267	356	3	150	6.7	4.3	15.42
2017–18	101	389	664	14	52	19.3	6.7	8.98
2018–19	89	328	330	11	151	6.6	3.8	12.36
Average	178	378	950	15	108	11.1	5.3	16.24

*Trappers and foxes per trapper include hunters and their harvest. Set-days per fox and foxes per 1000 set-days are based only on trapping activity, and do not include hunt harvest or hunter-days afield.

Statewide gray fox harvest trends, Utah 1982–2019.



Gray fox trapping harvest statistics by county and ecoregion, Utah 2018–19.

County	n	Trappers afield	Trap harvest	Traps set	Trapping days	Set-days	Set-days / fox	Foxes / 1000 set-days	Foxes / trapper
Beaver	1	2	9	22	65	651	75	13.3	4.0
Box Elder	0	0	—	—	—	—	—	—	—
Iron	3	7	9	24	80	341	39	25.5	1.3
Juab	0	0	—	—	—	—	—	—	—
Millard	0	0	—	—	—	—	—	—	—
Tooele	1	2	33	22	69	695	21	46.9	15.0
Great Basin totals	5	11	51	67	215	1687	34	29.6	4.6
Cache	0	0	—	—	—	—	—	—	—
Davis	0	0	—	—	—	—	—	—	—
Morgan	0	0	—	—	—	—	—	—	—
Piute	0	0	—	—	—	—	—	—	—
Rich	0	0	—	—	—	—	—	—	—
Salt Lake	0	0	—	—	—	—	—	—	—
Sanpete	0	0	—	—	—	—	—	—	—
Sevier	2	4	4	48	72	1316	303	3.3	1.0
Summit	0	0	—	—	—	—	—	—	—
Utah	1	2	13	22	69	695	53	18.8	6.0
Wasatch	1	2	11	9	217	868	80	12.5	5.0
Weber	0	0	—	—	—	—	—	—	—
Rocky Mountain totals	4	9	28	78	358	2879	102	9.8	3.3
Daggett	0	0	—	—	—	—	—	—	—
Duchesne	2	4	7	28	132	1565	240	4.2	1.5
Uintah	0	0	—	—	—	—	—	—	—
Uintah Basin totals	2	4	7	28	132	1565	240	4.2	1.5
Carbon	0	0	—	—	—	—	—	—	—
Emery	0	0	—	—	—	—	—	—	—
Garfield	5	11	30	193	393	11452	377	2.7	2.8
Grand	1	2	24	43	30	608	25	39.3	11.0
Kane	3	7	9	50	74	996	115	8.7	1.3
San Juan	9	20	115	378	923	25009	217	4.6	5.9
Washington	7	15	61	115	543	5492	90	11.1	4.0
Wayne	0	0	—	—	—	—	—	—	—
Colorado Plateau totals	25	54	239	779	1962	43557	182	5.5	4.4
Unknown	1	2	7	—	—	—	—	—	3.0
Statewide totals*	36	78	330	953	2675	49688	151	6.6	4.2

*Statewide totals for sample size and trappers afield are not totals of the columns because trappers trapped multiple counties.

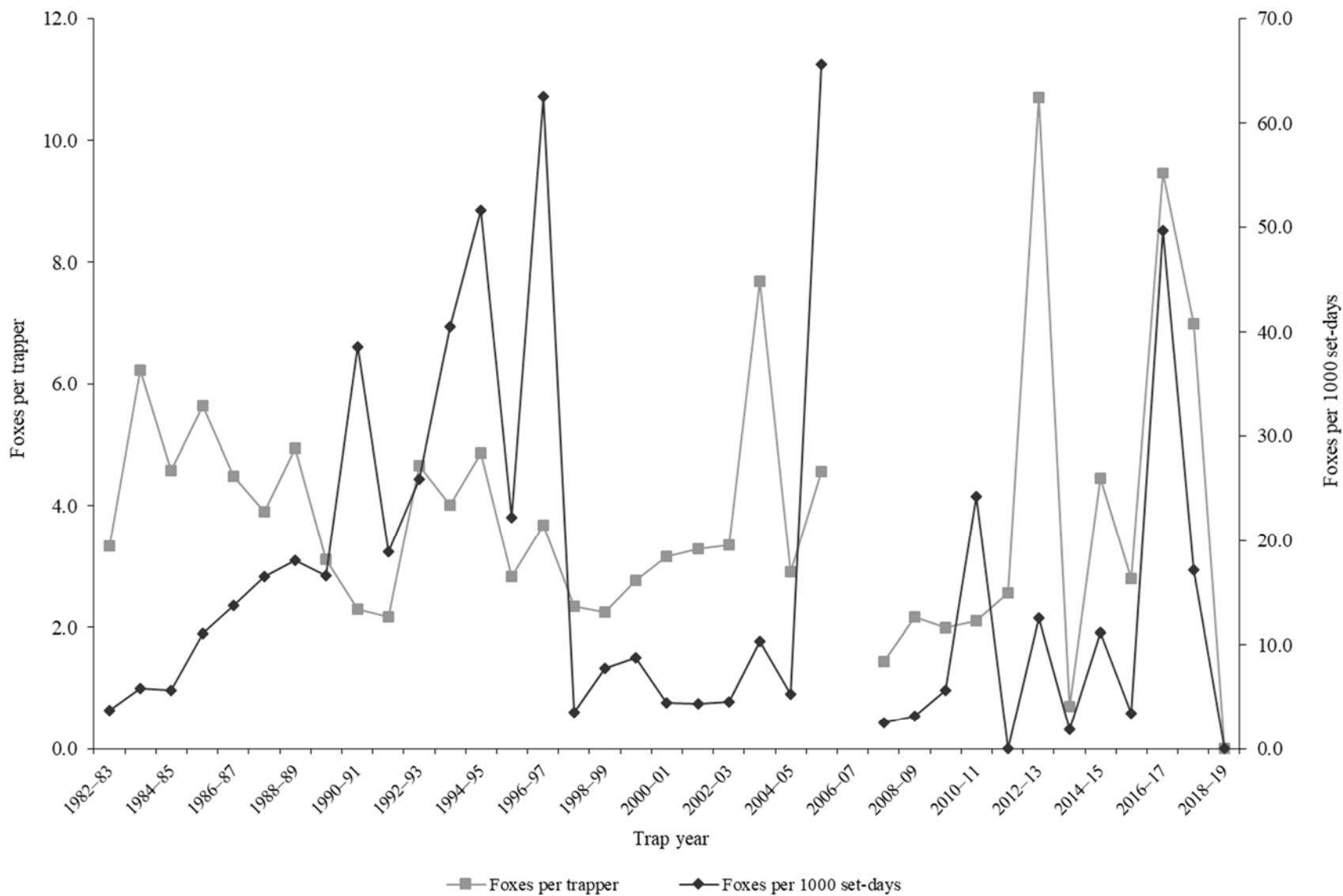
KIT FOX

Statewide kit fox harvest statistics*, Utah 1982–2019.

Trap year	Trappers afield	Incidental harvest	Trap harvest	Hunt harvest	Set-days / fox	Foxes / 1000 set-days	Foxes / trapper	Pelt price (\$)
1982–83	109	—	363	—	267	3.7	3.3	11.39
1983–84	112	—	698	—	171	5.8	6.2	11.99
1984–85	142	—	651	—	178	5.6	4.6	11.17
1985–86	108	—	609	—	90	11.1	5.6	7.50
1986–87	122	—	547	—	73	13.7	4.5	9.90
1987–88	138	—	538	—	61	16.5	3.9	10.69
1988–89	130	—	643	—	55	18.1	4.9	6.98
1989–90	117	—	365	—	60	16.6	3.1	3.19
1990–91	81	—	186	—	26	38.6	2.3	4.67
1991–92	86	—	187	—	53	18.9	2.2	2.78
1992–93	41	—	191	—	39	25.9	4.7	4.30
1993–94	75	—	301	—	25	40.6	4.0	4.69
1994–95	109	—	531	—	19	51.6	4.9	6.45
1995–96	77	—	218	—	45	22.2	2.8	6.25
1996–97	44	—	162	—	16	62.5	3.7	6.77
1997–98	41	—	96	—	282	3.5	2.3	3.50
1998–99	75	—	168	—	128	7.8	2.2	7.31
1999–00	66	—	183	—	114	8.8	2.8	2.90
2000–01	51	—	161	—	227	4.4	3.2	6.13
2001–02	52	—	171	—	229	4.4	3.3	10.72
2002–03	90	—	302	—	221	4.5	3.4	5.44
2003–04	83	—	638	—	97	10.4	7.7	5.38
2004–05	89	—	259	—	191	5.2	2.9	8.98
2005–06	40	—	183	—	15	65.6	4.6	10.92
2006–07	65	—	—	—	—	—	—	10.50
2007–08	27	—	39	—	392	2.6	1.4	7.87
2008–09	48	—	104	—	314	3.2	2.2	7.61
2009–10	19	13	38	—	177	5.6	2.0	9.47
2010–11	20	3	42	—	41	24.2	2.1	12.68
2011–12	18	64	0	46	—	0.0	2.6	14.49
2012–13	31	41	315	17	80	12.6	10.7	14.37
2013–14	10	7	7	0	515	1.9	0.7	14.32
2014–15	22	47	95	3	90	11.2	4.5	7.13
2015–16	29	18	37	44	296	3.4	2.8	6.54
2016–17	13	31	123	0	20	49.7	9.5	10.32
2017–18	2	30	14	0	58	17.2	7.0	6.60
2018–19	7	13	0	0	—	0.0	0.0	8.91
Average	65	27	255	14	137	16.6	3.8	8.13

*Trappers and foxes per trapper include hunters and their harvest. Set-days per fox and foxes per 1000 set-days are based only on trapping activity, and do not include hunt harvest or hunter-days afield.

Statewide kit fox harvest trends, Utah 1982–2019.



MARTEN

Statewide marten harvest statistics, Utah 1982–1999.

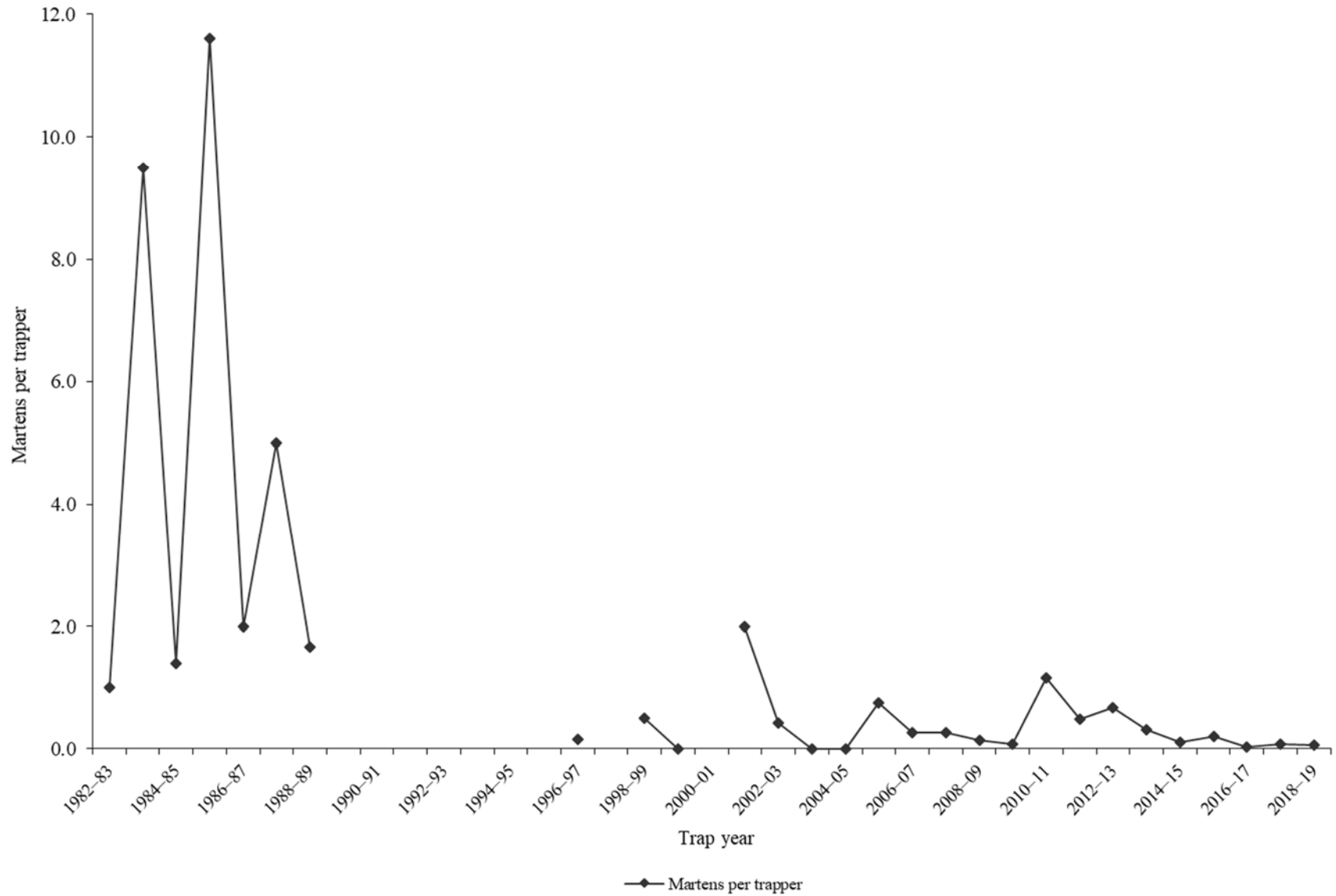
Trap year	Trappers afield	Trap / hunt harvest	Set-days	Set-days / marten	Martens / 1000 set-days	Martens / trapper	Pelt price (\$)
1982–83	1	1	6	6	166.7	1.0	10.00
1983–84	9	84	4704	56	17.9	9.5	20.00
1984–85	9	12	6516	543	1.8	1.4	24.00
1985–86	10	121	7381	61	16.4	11.6	23.00
1986–87	11	22	8558	389	2.6	2.0	25.68
1987–88	10	50	9750	195	5.1	5.0	40.00
1988–89	6	10	1210	121	8.3	1.7	31.00
1989–90	—	—	—	—	—	—	—
1990–91	—	—	—	—	—	—	—
1991–92	—	—	—	—	—	—	—
1992–93	—	—	—	—	—	—	—
1993–94	—	—	—	—	—	—	—
1994–95	—	—	—	—	—	—	—
1995–96	—	—	—	—	—	—	—
1996–97	13	2	—	—	—	0.2	20.00
1997–98	—	—	—	—	—	—	11.00
1998–99	12	6	1228	205	4.9	0.5	7.11
Average	9	34	4919	197	28.0	3.6	21.18

Statewide marten harvest statistics, Utah 1999–2019.

Trap year	Permits sold	Successful trappers	Male harvest	Female harvest	Unknown harvest	Total harvest	Success rate (%)*	Martens / trapper*
1999–00	5	0	0	0	0	0	0.0	0.0
2000–01	—	1	3	3	0	6	—	—
2001–02	11	2	16	6	0	22	18.2	2.0
2002–03	12	1	3	2	0	5	8.3	0.4
2003–04	18	0	0	0	0	0	0.0	0.0
2004–05	12	0	0	0	0	0	0.0	0.0
2005–06	16	2	7	4	1	12	12.5	0.8
2006–07	26	3	6	1	0	7	11.5	0.3
2007–08	22	4	7	14	0	21	18.2	1.0
2008–09	28	1	2	2	0	4	3.6	0.1
2009–10	25	1	2	0	0	2	4.0	0.1
2010–11	31	2	24	12	0	36	6.5	1.2
2011–12	29	3	7	3	4	14	10.3	0.5
2012–13	39	3	15	5	6	26	7.7	0.7
2013–14	51	6	13	3	0	16	11.8	0.3
2014–15	202	2	16	6	0	22	1.0	0.1
2015–16	46	1	5	4	0	9	2.2	0.2
2016–17	89	2	2	0	0	2	2.2	0.0
2017–18	184	3	11	4	0	15	1.6	0.1
2018–19	188	1	9	2	0	11	0.5	0.1
Average	54	2	8	3	1	12	6.3	0.4

*Assumption: Every person who possessed a marten permit trapped or hunted.

Statewide marten harvest trends, Utah 1982–2019.



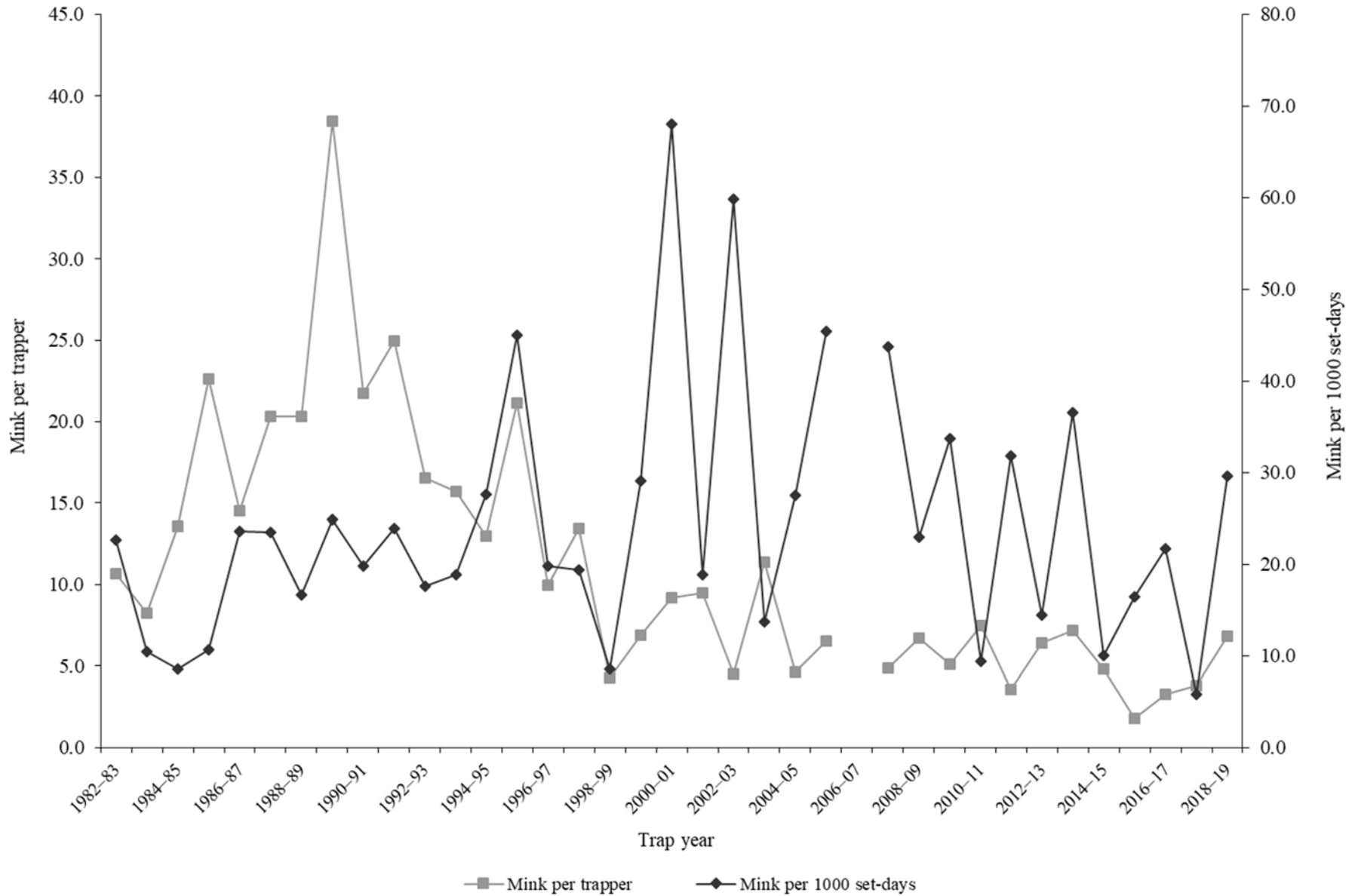
MINK

Statewide mink harvest statistics*, Utah 1982–2019.

Trap year	Trappers afield	Incidental harvest	Trap harvest	Hunt harvest	Set-days / mink	Minks / 1000 set-days	Minks / trapper	Pelt price (\$)
1982–83	38	—	405	—	44	22.7	10.7	10.85
1983–84	46	—	379	—	95	10.5	8.2	9.13
1984–85	40	—	542	—	117	8.6	13.6	10.27
1985–86	37	—	837	—	94	10.7	22.6	6.00
1986–87	57	—	828	—	42	23.6	14.5	10.63
1987–88	51	—	1037	—	42	23.6	20.3	12.25
1988–89	42	—	854	—	60	16.6	20.3	10.69
1989–90	29	—	1114	—	40	24.8	38.4	6.30
1990–91	25	—	543	—	50	19.8	21.7	6.33
1991–92	29	—	723	—	42	23.9	24.9	6.81
1992–93	23	—	380	—	57	17.6	16.5	7.50
1993–94	30	—	472	—	53	18.9	15.7	8.41
1994–95	27	—	350	—	36	27.6	13.0	8.38
1995–96	25	—	529	—	22	45.0	21.2	10.40
1996–97	27	—	269	—	50	19.8	10.0	10.95
1997–98	25	—	337	—	51	19.4	13.5	5.81
1998–99	81	—	345	—	116	8.6	4.3	7.11
1999–00	61	—	419	—	34	29.1	6.9	6.07
2000–01	51	—	468	—	15	68.1	9.2	4.92
2001–02	30	—	284	—	53	18.8	9.5	5.20
2002–03	59	—	268	—	17	59.8	4.5	2.07
2003–04	59	—	673	—	73	13.7	11.4	8.00
2004–05	68	—	317	—	36	27.5	4.7	8.98
2005–06	34	—	222	—	22	45.4	6.5	9.97
2006–07	65	—	—	—	—	—	—	7.94
2007–08	38	—	186	—	23	43.7	4.9	9.33
2008–09	36	—	242	—	44	22.9	6.7	5.96
2009–10	66	57	338	—	30	33.7	5.1	8.00
2010–11	65	151	485	—	107	9.4	7.5	11.27
2011–12	43	61	153	7	31	31.8	3.6	15.08
2012–13	110	147	706	14	70	14.4	6.4	19.18
2013–14	115	186	826	0	27	36.6	7.2	16.21
2014–15	54	82	259	0	100	10.0	4.8	8.57
2015–16	74	55	133	0	61	16.4	1.8	4.22
2016–17	60	29	196	21	46	21.7	3.3	7.52
2017–18	59	47	225	0	173	5.8	3.8	3.00
2018–19	33	20	219	7	34	29.6	6.8	2.00
Average	49	84	460	6	56	24.4	11.2	8.41

*Trappers and minks per trapper include hunters and their harvest. Set-days per mink and minks per 1000 set-days are based only on trapping activity, and do not include hunt harvest or hunter-days afield.

Statewide mink harvest trends, Utah 1982–2019.



*Statewide totals for sample size and trappers afield are not totals of the columns because trappers trapped multiple counties

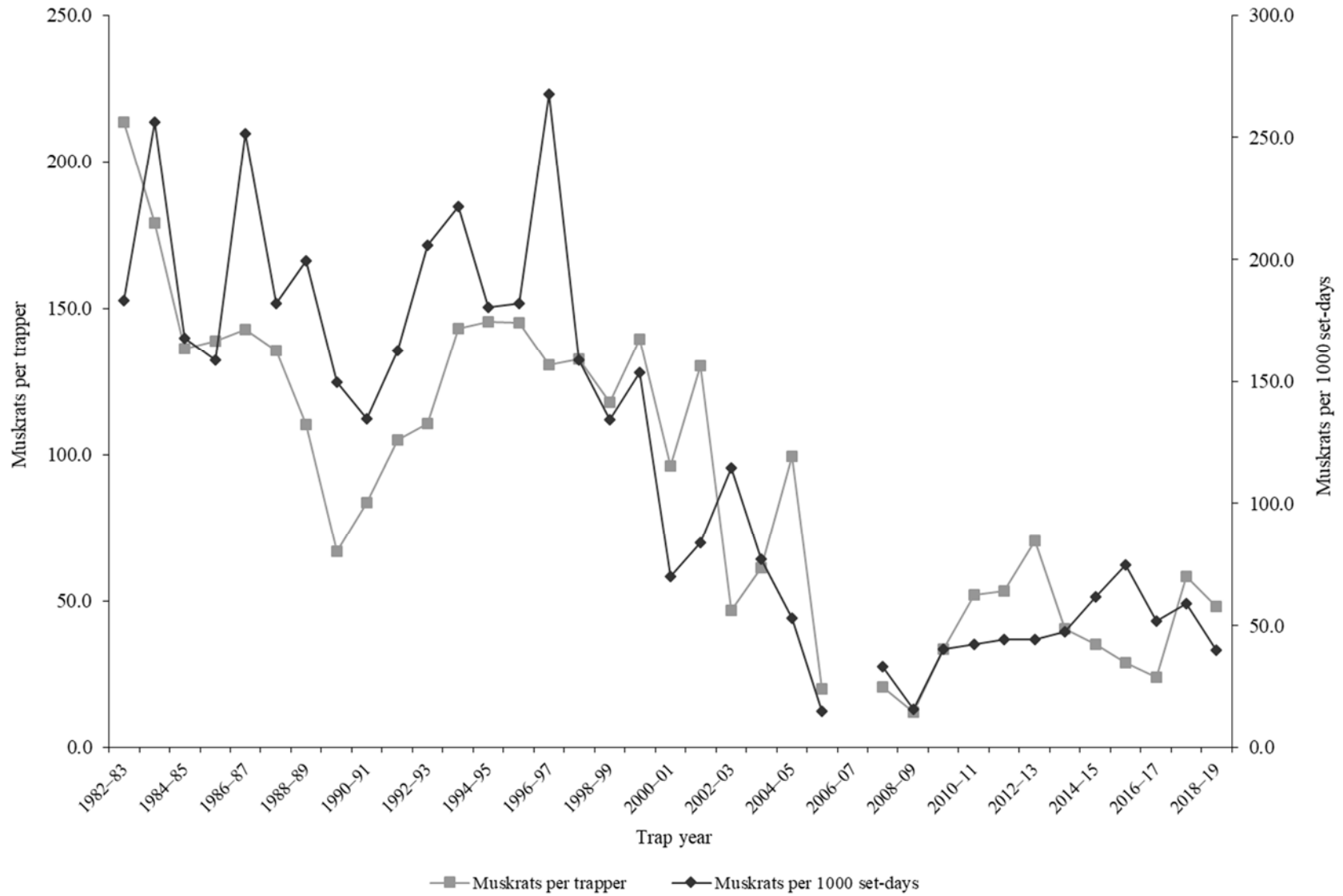
MUSKRAT

Statewide muskrat harvest statistics*, Utah 1982–2019.

Trap year	Trappers afield	Incidental harvest	Trap harvest	Hunt harvest	Set-days / muskrat	Musk rats / 1000 set-days	Musk rats / trapper	Pelt price (\$)
1982–83	258	—	55137	—	5	183.1	213.7	2.16
1983–84	309	—	55298	—	4	256.2	179.0	2.46
1984–85	400	—	54526	—	6	168.1	136.3	2.45
1985–86	282	—	39195	—	6	158.9	139.0	1.86
1986–87	416	—	59368	—	4	251.7	142.7	2.66
1987–88	432	—	58560	—	5	182.2	135.6	2.46
1988–89	303	—	33400	—	5	199.4	110.2	1.40
1989–90	253	—	16898	—	7	149.6	66.8	0.89
1990–91	85	—	7102	—	7	134.6	83.6	0.91
1991–92	186	—	19547	—	6	162.7	105.1	1.60
1992–93	105	—	11623	—	5	205.9	110.7	1.18
1993–94	157	—	22488	—	5	221.5	143.2	1.89
1994–95	195	—	28369	—	6	180.5	145.5	1.74
1995–96	181	—	26260	—	5	182.2	145.1	2.09
1996–97	179	—	23371	—	4	267.9	130.6	3.59
1997–98	203	—	26907	—	6	158.7	132.5	2.01
1998–99	186	—	21895	—	7	134.1	117.7	1.73
1999–00	151	—	21086	—	7	153.7	139.6	1.00
2000–01	108	—	10376	—	14	69.8	96.1	1.58
2001–02	115	—	14979	—	12	84.0	130.3	2.60
2002–03	135	—	6334	—	9	114.6	46.9	1.59
2003–04	176	—	10777	—	13	77.0	61.2	1.57
2004–05	151	—	15016	—	19	53.1	99.4	1.57
2005–06	41	0	824	—	66	15.3	20.1	3.97
2006–07	81	—	—	—	—	—	—	3.31
2007–08	80	110	1665	—	30	33.3	20.9	3.04
2008–09	98	137	1198	—	63	15.9	12.2	2.49
2009–10	158	164	5341	—	25	40.5	33.8	4.93
2010–11	141	337	7361	—	24	42.2	52.2	5.40
2011–12	150	281	7985	—	23	44.4	53.2	7.28
2012–13	192	117	13534	3	23	44.2	70.5	8.11
2013–14	213	159	8605	0	21	47.5	40.4	8.73
2014–15	168	180	5902	9	16	61.8	35.1	3.76
2015–16	210	41	6130	4	13	74.9	29.2	1.89
2016–17	128	92	3069	3	19	51.8	24.0	3.78
2017–18	122	110	7131	24	17	58.8	58.5	2.91
2018–19	72	24	3465	2	25	39.9	48.2	3.15
Average	184	135	19742	6	15	120.0	91.9	2.86

*Trappers and muskrat per trapper include hunters and their harvest. Set-days per muskrat and muskrat per 1000 set-days are based only on trapping activity, and do not include hunt harvest or hunter-days afield.

Statewide muskrat harvest trends, Utah 1982–2019.



Muskrat harvest statistics by county and ecoregion, Utah 2018–19.

County	n	Trappers afield	Trap harvest	Traps set	Trapping days	Set-days	Set-days / muskrat	Musk rats / 1000 set-days	Musk rats / trapper
Beaver	0	0	—	—	—	—	—	—	—
Box Elder	4	9	316	571	193	29101	92	10.8	36.3
Iron	0	0	—	—	—	—	—	—	—
Juab	1	2	4	2	98	98	23	44.4	2.0
Millard	0	0	—	—	—	—	—	—	—
Tooele	0	0	—	—	—	—	—	—	—
Great Basin totals	5	11	320	573	291	29199	91	11.0	29.5
Cache	8	17	471	278	528	9263	20	50.9	27.1
Davis	4	9	1400	515	354	19983	14	70.1	161.3
Morgan	4	9	354	258	217	4498	13	78.7	40.8
Piute	0	0	—	—	—	—	—	—	—
Rich	0	0	—	—	—	—	—	—	—
Salt Lake	4	9	104	74	143	1385	13	75.2	12.0
Sanpete	0	0	—	—	—	—	—	—	—
Sevier	0	0	—	—	—	—	—	—	—
Summit	0	0	—	—	—	—	—	—	—
Utah	1	2	13	43	46	912	70	14.3	6.0
Wasatch	3	7	204	126	330	7898	39	25.8	31.3
Weber	2	4	499	386	109	11202	22	44.6	115.0
Rocky Mountain totals	26	56	3045	1680	1726	55141	18	55.2	54.0
Daggett	0	0	—	—	—	—	—	—	—
Duchesne	0	0	—	—	—	—	—	—	—
Uintah	1	2	4	11	15	76	18	57.1	2.0
Uintah Basin totals	1	2	4	11	15	76	18	57.1	2.0
Carbon	0	0	—	—	—	—	—	—	—
Emery	0	0	—	—	—	—	—	—	—
Garfield	1	2	26	13	30	182	7	142.9	12.0
Grand	0	0	—	—	—	—	—	—	—
Kane	0	0	—	—	—	—	—	—	—
San Juan	0	0	—	—	—	—	—	—	—
Washington	0	0	—	—	—	—	—	—	—
Wayne	1	2	69	37	130	2214	32	31.4	32.0
Colorado Plateau totals	2	4	95	50	161	2397	25	39.9	22.0
Unknown	0	0	—	—	—	—	—	—	—
Statewide totals*	31	67	3465	2314	2193	86812	25	39.9	51.5

*Statewide totals for sample size and trappers afield are not totals of the columns because trappers trapped multiple counties.

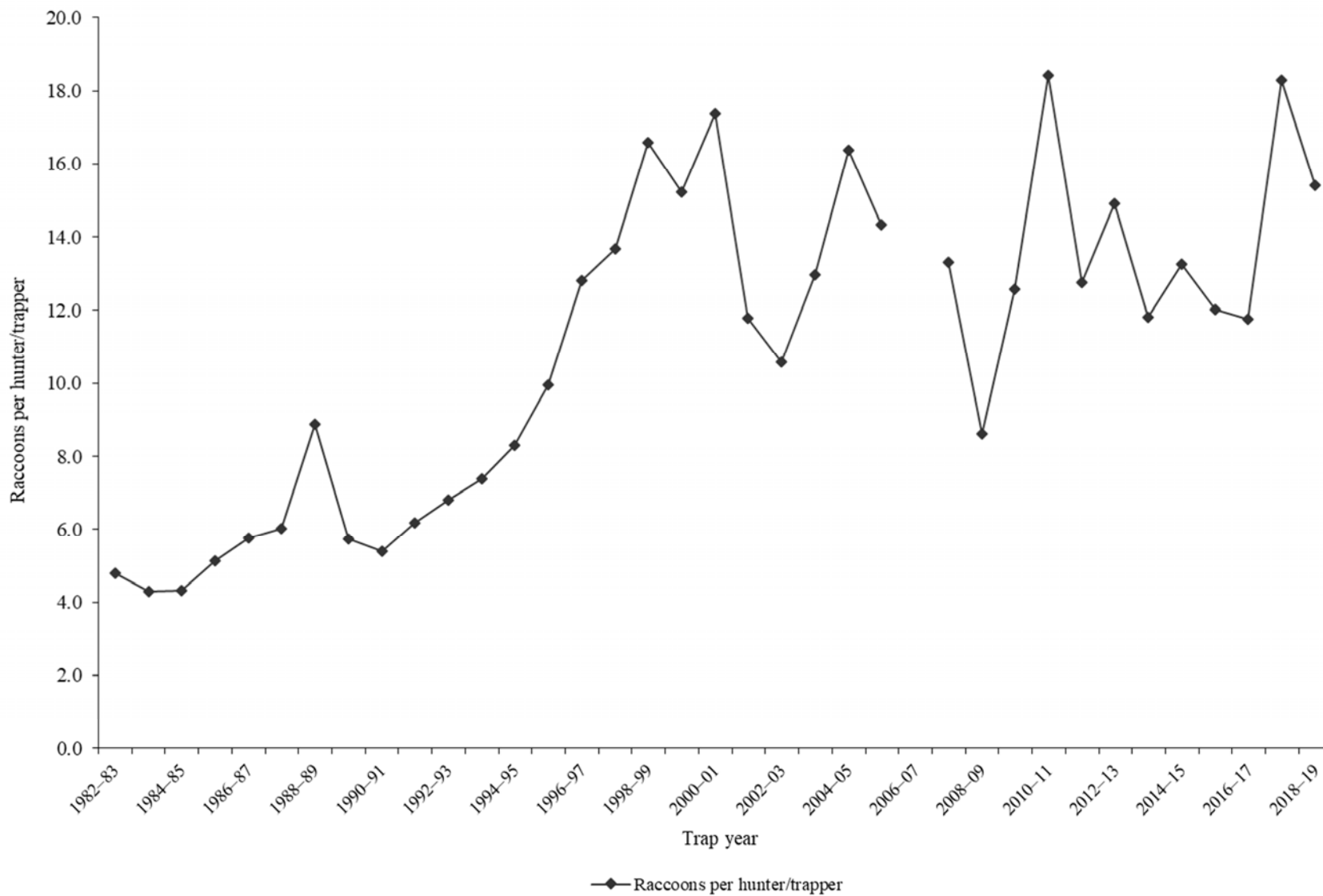
RACCOON

Statewide raccoon harvest statistics*, Utah 1982–2019.

Trap year	Trappers afield	Incidental harvest	Trap harvest	Hunt harvest	Set-days / raccoon	Raccoons / 1000 set-days	Raccoons / trapper	Pelt price (\$)
1982–83	178	—	853	—	19	51.3	4.8	12.34
1983–84	192	—	822	—	40	25.0	4.3	13.51
1984–85	329	—	1417	—	47	21.2	4.3	12.85
1985–86	290	—	1485	—	49	20.5	5.1	9.26
1986–87	418	—	2412	—	39	25.5	5.8	12.62
1987–88	434	—	2619	—	41	24.3	6.0	9.41
1988–89	350	—	3104	—	14	71.9	8.9	7.71
1989–90	430	—	2464	—	17	58.8	5.7	5.78
1990–91	214	—	1156	—	18	54.3	5.4	4.65
1991–92	368	—	2273	—	20	50.3	6.2	4.72
1992–93	272	—	1851	—	17	59.5	6.8	2.57
1993–94	306	—	2259	—	19	53.4	7.4	6.98
1994–95	364	—	3025	—	23	43.8	8.3	6.06
1995–96	293	—	2914	—	10	100.1	9.9	8.07
1996–97	330	—	4228	—	13	77.2	12.8	13.35
1997–98	365	—	4989	—	29	34.5	13.7	9.98
1998–99	468	—	7765	—	22	45.5	16.6	4.95
1999–00	349	—	5317	—	34	29.8	15.2	5.67
2000–01	327	—	5678	—	29	34.8	17.4	5.16
2001–02	321	—	3785	—	32	31.2	11.8	8.04
2002–03	378	—	4001	—	26	38.4	10.6	5.62
2003–04	434	—	5634	—	37	26.8	13.0	10.63
2004–05	391	—	6405	—	35	28.4	16.4	6.54
2005–06	230	—	1761	1537	246	4.1	14.3	9.83
2006–07	325	—	—	—	—	—	—	7.18
2007–08	300	—	2414	1576	50	19.8	13.3	10.85
2008–09	275	—	1639	729	58	17.4	8.6	6.21
2009–10	349	633	3439	946	39	25.9	12.6	7.09
2010–11	292	571	3958	1417	28	36.0	18.4	8.17
2011–12	289	453	3168	520	34	29.6	12.8	7.77
2012–13	377	614	4048	1577	35	28.4	14.9	14.08
2013–14	374	1066	4031	385	48	21.0	11.8	9.50
2014–15	354	743	4046	648	49	20.4	13.3	5.46
2015–16	343	627	3631	490	44	22.7	12.0	4.10
2016–17	264	523	2734	371	55	18.2	11.8	4.92
2017–18	258	601	3539	1181	29	34.8	18.3	3.92
2018–19	141	486	1798	376	48	21.0	15.4	6.49
Average	324	632	3241	904	39	36.3	10.9	7.89

*Trappers and raccoons per trapper include hunters and their harvest. Set-days per raccoon and raccoons per 1000 set-days are based only on trapping activity, and do not include hunt harvest or hunter-days afield.

Statewide raccoon harvest trends, Utah 1982–2019.



Raccoon trapping harvest statistics by county and ecoregion, Utah 2018–19.

County	n	Trappers afield	Trap harvest	Traps set	Trapping days	Set-days	Set-days / raccoon	Raccoons / 1000 set-days	Raccoons / trapper
Beaver	0	0	—	—	—	—	—	—	—
Box Elder	5	11	89	137	439	6217	70	14.3	8.2
Iron	1	2	7	13	13	78	12	83.3	3.0
Juab	2	4	35	9	250	499	14	69.6	8.0
Millard	2	4	15	48	91	1745	115	8.7	3.5
Tooele	2	4	11	17	46	152	14	71.4	2.5
Great Basin totals	12	26	157	224	838	8692	56	18.0	6.0
Cache	8	17	742	634	842	49996	67	14.9	42.8
Davis	6	13	139	119	369	4461	32	31.1	10.7
Morgan	2	4	109	35	202	1993	18	54.5	25.0
Piute	0	0	—	—	—	—	—	—	—
Rich	0	0	—	—	—	—	—	—	—
Salt Lake	4	9	89	80	699	3734	42	23.8	10.3
Sanpete	2	4	7	9	30	61	9	107.1	1.5
Sevier	2	4	282	130	176	6969	25	40.5	65.0
Summit	3	7	37	22	137	475	13	77.6	5.7
Utah	4	9	98	111	363	5896	60	16.6	11.3
Wasatch	2	4	43	22	63	315	7	137.9	10.0
Weber	2	4	61	56	72	1342	22	45.3	14.0
Rocky Mountain totals	35	76	1607	1218	2952	75241	47	21.4	21.1
Daggett	0	0	—	—	—	—	—	—	—
Duchesne	0	0	—	—	—	—	—	—	—
Uintah	3	7	22	39	124	1153	53	18.8	3.3
Uintah Basin totals	3	7	22	39	124	1153	53	18.8	3.3
Carbon	0	0	—	—	—	—	—	—	—
Emery	0	0	—	—	—	—	—	—	—
Garfield	1	2	4	4	65	130	30	33.3	2.0
Grand	1	2	4	7	65	195	45	22.2	2.0
Kane	0	0	—	—	—	—	—	—	—
San Juan	1	2	0	2	2	2	—	0.0	0.0
Washington	1	2	4	7	2	7	2	666.7	2.0
Wayne	0	0	—	—	—	—	—	—	—
Colorado Plateau totals	4	9	12	20	135	334	26	39.0	1.5
Unknown	0	0	—	—	—	—	—	—	—
Statewide totals*	52	113	1798	1500	4049	85421	48	21.0	15.9

*Statewide totals for sample size and trappers afield are not totals of the columns because trappers trapped multiple counties.

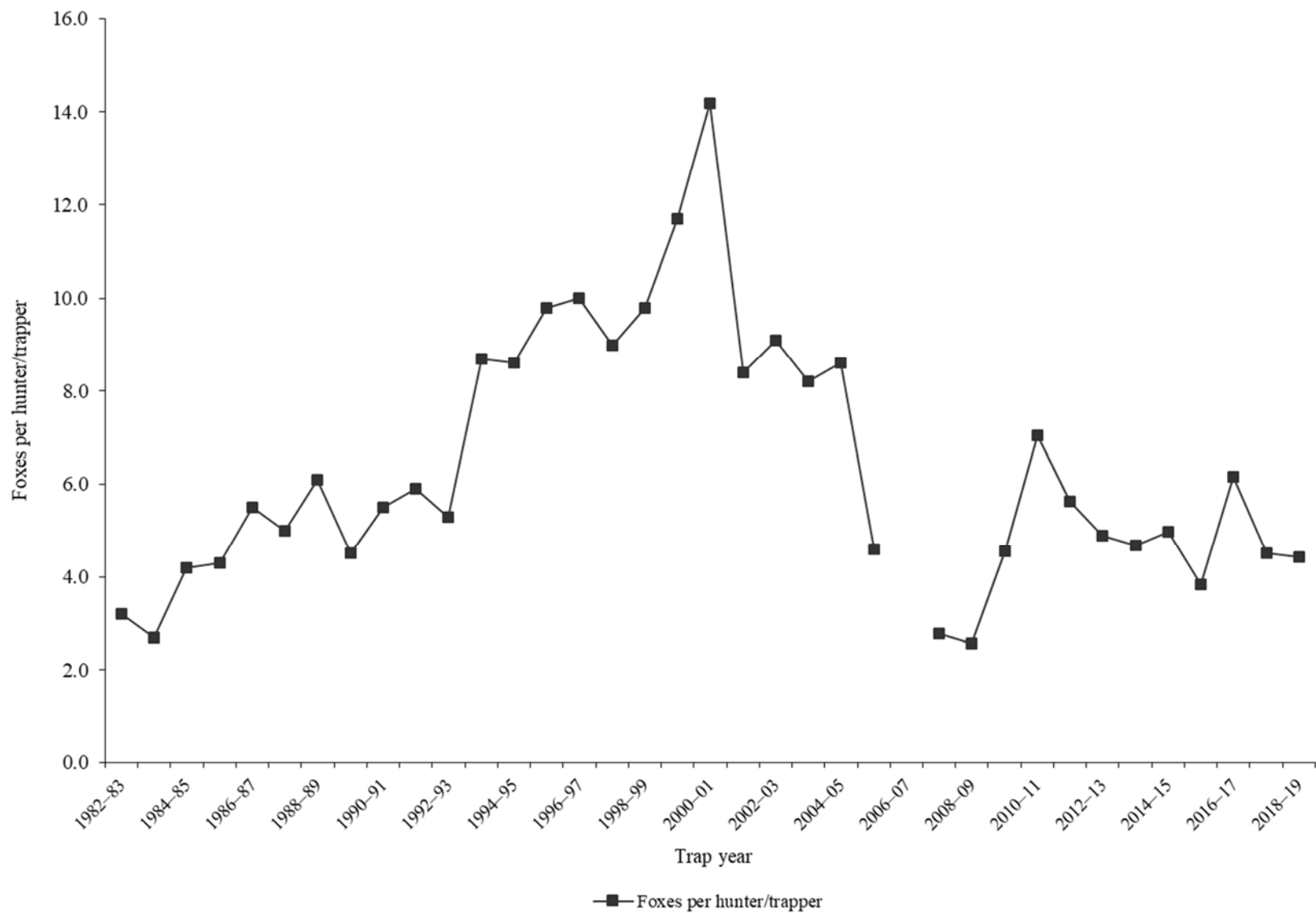
RED FOX

Statewide red fox harvest statistics*, Utah 1982–2019.

Trap year	Trappers afield	Incidental harvest	Trap harvest	Hunt harvest	Set-days / fox	Foxes / 1000 set-days	Foxes / trapper	Pelt price (\$)
1982–83	172	—	544	—	128	7.8	3.2	30.13
1983–84	191	—	523	—	134	7.5	2.7	28.43
1984–85	298	—	1244	—	116	8.7	4.2	25.90
1985–86	316	—	1351	—	74	13.6	4.3	15.83
1986–87	444	—	2446	—	59	17.1	5.5	20.14
1987–88	506	—	2545	—	50	20.2	5.0	13.66
1988–89	398	—	2446	—	34	29.2	6.1	6.57
1989–90	496	—	2250	—	40	25.3	4.5	7.80
1990–91	365	—	1993	—	25	40.0	5.5	6.34
1991–92	623	—	3663	—	28	35.4	5.9	10.70
1992–93	594	—	3126	—	27	37.5	5.3	10.12
1993–94	578	—	5055	—	26	38.9	8.7	14.74
1994–95	509	—	4378	—	36	28.0	8.6	15.34
1995–96	421	—	4115	—	26	38.7	9.8	18.08
1996–97	427	—	4274	—	27	36.8	10.0	17.48
1997–98	414	—	3744	—	32	31.5	9.0	11.31
1998–99	570	—	5600	—	34	29.5	9.8	8.95
1999–00	420	—	4900	—	44	22.7	11.7	14.19
2000–01	375	—	5330	—	52	19.1	14.2	16.92
2001–02	379	—	3192	—	59	16.9	8.4	24.48
2002–03	482	—	4399	—	76	13.1	9.1	28.19
2003–04	568	—	4639	—	71	14.1	8.2	18.07
2004–05	545	—	4674	—	102	9.8	8.6	18.86
2005–06	406	—	1874	—	196	5.1	4.6	24.35
2006–07	496	—	—	—	—	—	—	20.49
2007–08	407	—	1130	—	174	5.7	2.8	21.42
2008–09	339	—	872	—	261	3.8	2.6	17.98
2009–10	461	557	1908	192	102	9.8	4.6	16.32
2010–11	376	216	2435	213	84	12.0	7.0	22.62
2011–12	335	388	1757	128	84	11.9	5.6	42.47
2012–13	380	195	1690	171	83	12.1	4.9	43.50
2013–14	428	519	1934	64	154	6.5	4.7	40.39
2014–15	361	478	1714	79	161	6.2	5.0	24.30
2015–16	361	494	1183	203	180	5.6	3.8	15.37
2016–17	207	351	1175	99	249	4.0	6.2	16.16
2017–18	251	372	1048	84	122	8.2	4.5	14.63
2018–19	165	252	627	102	179	5.6	4.4	15.92
Average	407	382	2661	134	92	17.7	6.4	19.41

*Trappers and foxes per trapper include hunters and their harvest. Set-days per fox and foxes per 1000 set-days are based only on trapping activity, and do not include hunt harvest or hunter-days afield.

Statewide red fox harvest trends, Utah 1982–2019.



Red fox trapping harvest statistics by county and ecoregion, Utah 2018–19.

County	n	Trappers afield	Trap harvest	Traps set	Trapping days	Set-days	Set-days / fox	Foxes / 1000 set-days	Foxes / trapper
Beaver	1	2	11	13	65	391	36	27.8	5.0
Box Elder	0	0	—	—	—	—	—	—	—
Iron	2	4	0	13	82	247	—	0.0	0.0
Juab	2	4	17	15	326	1042	60	16.7	4.0
Millard	3	7	24	39	230	2154	90	11.1	3.7
Tooele	2	4	7	26	282	1693	260	3.8	1.5
Great Basin totals	10	22	59	106	986	5527	94	10.6	2.7
Cache	5	11	185	515	558	55239	299	3.3	17.0
Davis	4	9	85	91	261	2853	34	29.7	9.8
Morgan	0	0	—	—	—	—	—	—	—
Piute	0	0	—	—	—	—	—	—	—
Rich	1	2	4	17	30	243	56	17.9	2.0
Salt Lake	0	0	—	—	—	—	—	—	—
Sanpete	4	9	28	54	304	1889	67	14.9	3.3
Sevier	1	2	33	—	—	—	—	—	15.0
Summit	0	0	—	—	—	—	—	—	—
Utah	6	13	13	154	274	6274	482	2.1	1.0
Wasatch	0	0	—	—	—	—	—	—	—
Weber	1	2	33	33	56	847	26	38.5	15.0
Rocky Mountain totals	22	48	381	864	1483	67344	177	5.6	8.0
Daggett	1	2	4	26	278	3335	768	1.3	2.0
Duchesne	3	7	20	111	434	9139	468	2.1	3.0
Uintah	6	13	20	98	380	8440	432	2.3	1.5
Uintah Basin totals	10	22	44	234	1092	20914	482	2.1	2.0
Carbon	1	2	28	33	65	977	35	28.9	13.0
Emery	2	4	20	15	102	590	30	33.1	4.5
Garfield	5	11	24	161	382	11202	469	2.1	2.2
Grand	0	0	—	—	—	—	—	—	—
Kane	0	0	—	—	—	—	—	—	—
San Juan	7	15	72	135	547	5156	72	13.9	4.7
Washington	1	2	0	7	30	91	—	0.0	0.0
Wayne	1	2	2	9	109	434	200	5.0	1.0
Colorado Plateau totals	17	37	146	358	1235	18450	127	7.9	3.9
Unknown	1	2	0	52	7	156	—	0.0	0.0
Statewide totals*	59	128	627	1615	4802	112392	179	5.6	4.9

*Statewide totals for sample size and trappers afield are not totals of the columns because trappers trapped multiple counties.

Red fox hunting harvest statistics by county and ecoregion, Utah 2018–19.

County	n	Hunters afield	Hunt harvest	Hunter-days afield	Hunter-days / fox	Foxes / hunter
Beaver	2	4	11	33	3.0	2.5
Box Elder	1	2	0	4	—	0.0
Iron	2	4	2	20	9.0	0.5
Juab	1	2	0	13	—	0.0
Millard	3	7	20	28	1.4	3.0
Tooele	1	2	0	20	—	0.0
Great Basin totals	10	22	33	117	3.6	1.5
Cache	1	2	0	195	—	0.0
Davis	1	2	0	2	—	0.0
Morgan	0	0	—	—	—	—
Piute	1	2	0	4	—	0.0
Rich	0	0	—	—	—	—
Salt Lake	0	0	—	—	—	—
Sanpete	1	2	13	13	1.0	6.0
Sevier	2	4	7	24	3.7	1.5
Summit	0	0	—	—	—	—
Utah	1	2	2	2	1.0	1.0
Wasatch	1	2	2	20	9.0	1.0
Weber	0	0	—	—	—	—
Rocky Mountain totals	8	17	24	261	10.9	1.4
Daggett	0	0	—	—	—	—
Duchesne	1	2	7	4	0.7	3.0
Uintah	1	2	9	11	1.3	4.0
Uintah Basin totals	2	4	15	15	1.0	3.5
Carbon	0	0	—	—	—	—
Emery	3	7	24	43	1.8	3.7
Garfield	0	0	—	—	—	—
Grand	1	2	4	2	0.5	2.0
Kane	0	0	—	—	—	—
San Juan	3	7	2	295	136.0	0.3
Washington	0	0	—	—	—	—
Wayne	0	0	—	—	—	—
Colorado Plateau totals	7	15	30	341	11.2	2.0
Unknown	1	2	0	7	—	0.0
Statewide totals*	22	48	102	740	7.3	2.1

*Statewide totals for sample size and hunters afield are not totals of the columns because hunters hunted multiple counties.

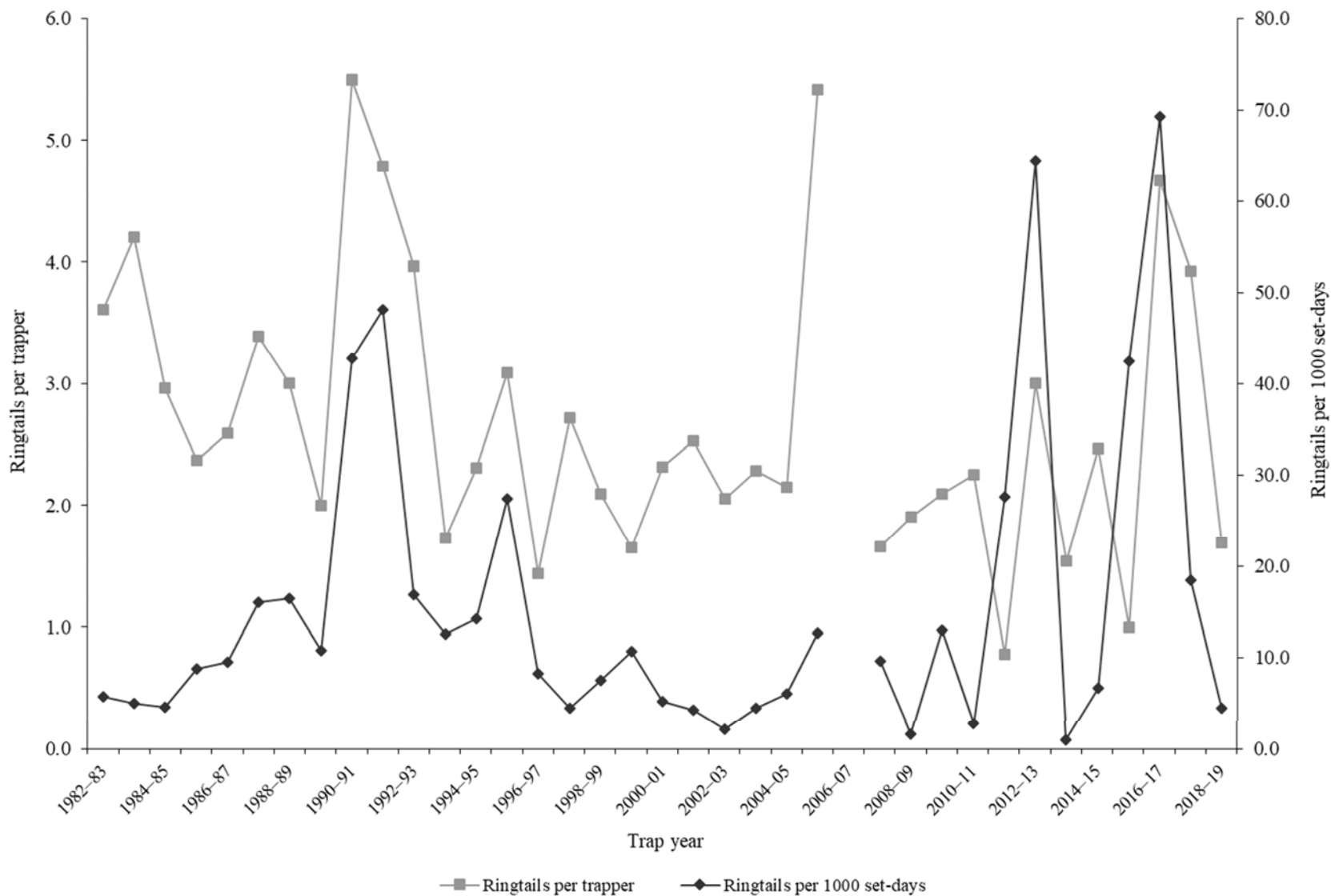
RINGTAIL

Statewide ringtail harvest statistics*, Utah 1982–2019.

Trap year	Trappers afield	Incidental harvest	Trap harvest	Hunt harvest	Set-days / ringtail	Ringtails / 1000 set-days	Ringtails / trapper	Pelt price (\$)
1982–83	90	—	325	—	176	5.7	3.6	4.40
1983–84	90	—	378	—	203	4.9	4.2	3.96
1984–85	85	—	252	—	218	4.6	3.0	3.15
1985–86	68	—	161	—	114	8.8	2.4	2.69
1986–87	79	—	205	—	105	9.6	2.6	3.64
1987–88	79	—	268	—	62	16.0	3.4	2.40
1988–89	62	—	186	—	61	16.4	3.0	5.70
1989–90	66	—	132	—	93	10.7	2.0	2.65
1990–91	18	—	99	—	23	42.8	5.5	3.50
1991–92	46	—	220	—	21	48.1	4.8	3.22
1992–93	27	—	107	—	59	16.9	4.0	3.97
1993–94	37	—	64	—	80	12.6	1.7	4.04
1994–95	69	—	159	—	70	14.3	2.3	6.41
1995–96	44	—	136	—	37	27.4	3.1	6.96
1996–97	32	—	46	—	122	8.2	1.4	11.68
1997–98	21	—	57	—	227	4.4	2.7	2.99
1998–99	66	—	138	—	134	7.5	2.1	4.17
1999–00	61	—	101	—	93	10.7	1.7	7.03
2000–01	51	—	118	—	194	5.2	2.3	6.00
2001–02	40	—	101	—	236	4.2	2.5	10.29
2002–03	56	—	115	—	474	2.1	2.1	5.20
2003–04	42	—	96	—	223	4.5	2.3	6.83
2004–05	59	—	127	—	165	6.1	2.2	11.12
2005–06	19	—	103	—	79	12.7	5.4	9.31
2006–07	98	—	—	—	—	—	—	12.37
2007–08	65	—	108	—	104	9.6	1.7	14.86
2008–09	31	—	59	—	621	1.6	1.9	10.70
2009–10	22	63	46	—	77	13.0	2.1	15.00
2010–11	16	26	36	—	356	2.8	2.3	18.91
2011–12	18	14	14	—	36	27.6	0.8	12.21
2012–13	7	41	21	0	16	64.5	3.0	15.66
2013–14	24	64	37	0	991	1.0	1.5	17.91
2014–15	13	32	32	0	150	6.7	2.5	17.27
2015–16	18	52	18	0	24	42.4	1.0	12.56
2016–17	18	18	84	0	14	69.3	4.7	23.47
2017–18	28	47	110	2	55	18.4	3.9	20.81
2018–19	13	0	15	7	221	4.5	1.7	10.36
Average	45	36	119	1	165	15.7	2.7	9.01

*Trappers and ringtails per trapper include hunters and their harvest. Set-days per ringtail and ringtails per 1000 set-days are based only on trapping activity, and do not include hunt harvest or hunter-days afield.

Statewide ringtail harvest trends, Utah 1982–2019.



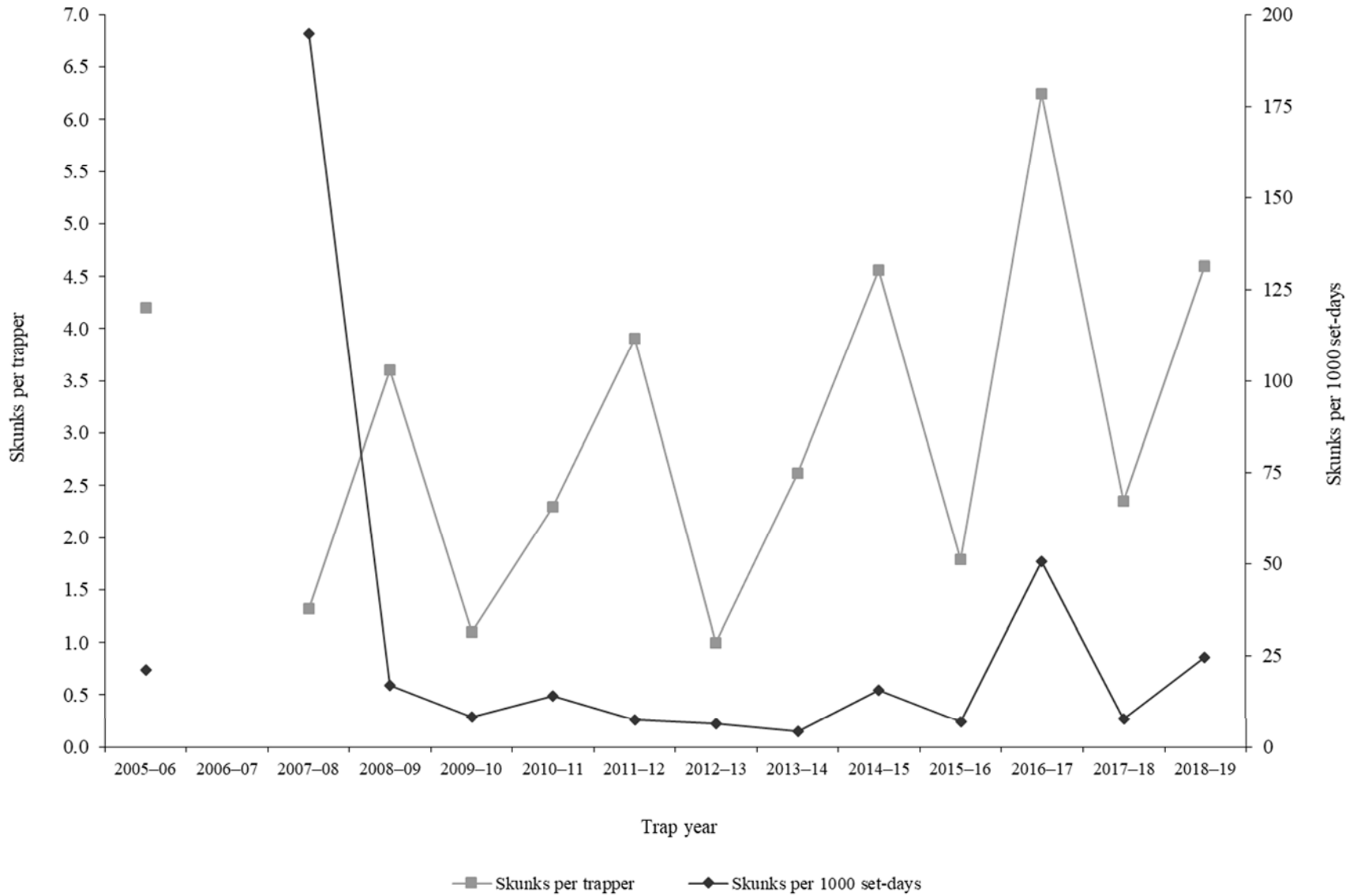
SPOTTED SKUNK

Statewide spotted skunk harvest statistics*, Utah 2005–2019.

Trap year	Trappers afield	Incidental harvest	Trap harvest	Hunt harvest	Set-days / skunk	Skunks / 1000 set-days	Skunks / trapper	Pelt price (\$)
2005–06	34	—	144	—	47	21.2	4.2	5.37
2006–07	106	—	—	—	—	—	—	12.42
2007–08	34	—	45	—	5	194.8	1.3	12.07
2008–09	67	—	238	—	60	16.8	3.6	8.00
2009–10	19	95	21	—	124	8.1	1.1	15.00
2010–11	33	200	76	—	71	14.0	2.3	15.00
2011–12	11	221	14	29	135	7.4	3.9	8.25
2012–13	17	137	17	0	156	6.4	1.0	14.48
2013–14	13	206	17	17	230	4.3	2.6	13.51
2014–15	25	285	114	0	65	15.5	4.6	9.80
2015–16	33	321	55	4	145	6.9	1.8	6.09
2016–17	8	63	50	0	20	50.5	6.3	5.51
2017–18	23	155	47	7	130	7.7	2.3	8.65
2018–19	15	115	69	0	41	24.5	4.6	—
Average	31	180	70	7	95	29.1	3.0	10.32

*Trappers and skunks per trapper include hunters and their harvest. Set-days per skunk and skunks per 1000 set-days are based only on trapping activity, and do not include hunt harvest or hunter-days afield.

Statewide spotted skunk* harvest trends, Utah 2005–2019.



*Prior to 2005–06, spotted skunk harvest and trapping activity were combined with striped skunk.

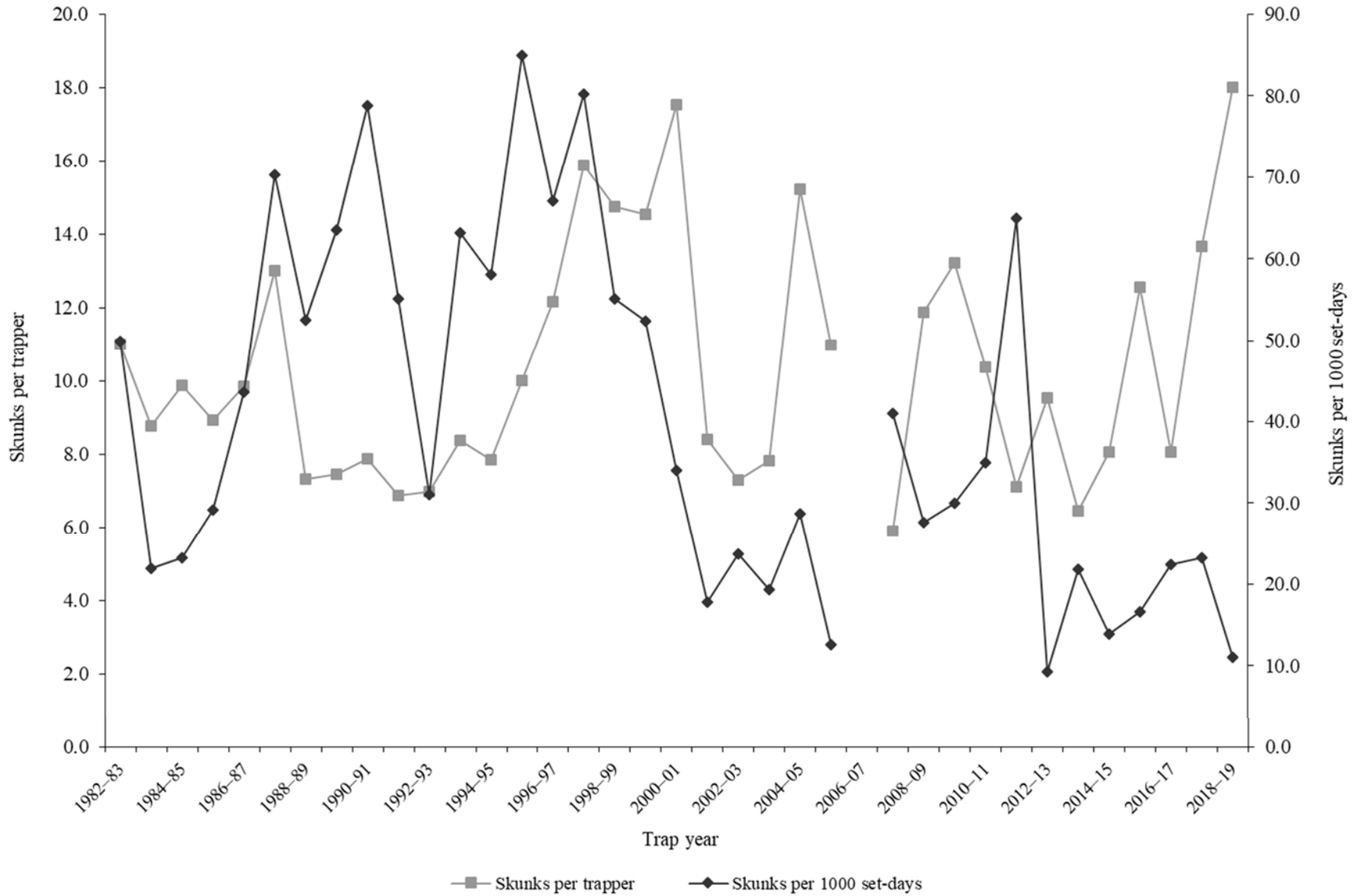
STRIPED SKUNK

Statewide striped skunk harvest statistics*, Utah 1982–2019.

Trap year	Trappers afield	Incidental harvest	Trap harvest	Hunt harvest	Set-days / skunk	Skunks / 1000 set-days	Skunks / trapper	Pelt price (\$)
1982–83	140	—	1540	—	20	49.9	11.0	3.00
1983–84	144	—	1262	—	45	22.0	8.8	2.85
1984–85	111	—	1097	—	43	23.3	9.9	2.17
1985–86	195	—	1741	—	34	29.1	8.9	—
1986–87	188	—	1851	—	23	43.6	9.8	—
1987–88	185	—	2404	—	14	70.2	13.0	1.05
1988–89	132	—	966	—	19	52.5	7.3	0.30
1989–90	173	—	1289	—	16	63.6	7.5	0.30
1990–91	82	—	645	—	13	78.8	7.9	0.30
1991–92	151	—	1037	—	18	55.2	6.9	4.00
1992–93	132	—	922	—	32	31.1	7.0	5.30
1993–94	175	—	1465	—	16	63.2	8.4	7.35
1994–95	183	—	1438	—	17	58.1	7.9	9.29
1995–96	175	—	1753	—	12	84.9	10.0	6.63
1996–97	142	—	1726	—	15	67.1	12.2	6.00
1997–98	182	—	2890	—	12	80.2	15.9	4.11
1998–99	219	—	3227	—	18	55.1	14.7	5.67
1999–00	188	—	2730	—	19	52.3	14.5	8.50
2000–01	220	—	3857	—	29	34.0	17.5	8.69
2001–02	214	—	1798	—	56	17.8	8.4	6.79
2002–03	237	—	1732	—	42	23.7	7.3	4.24
2003–04	295	—	2305	—	52	19.3	7.8	10.00
2004–05	280	—	4264	—	35	28.7	15.2	4.64
2005–06	95	—	1043	—	79	12.6	11.0	5.37
2006–07	138	—	—	—	—	—	—	6.07
2007–08	144	—	848	—	24	41.0	5.9	4.52
2008–09	143	—	1697	—	36	27.6	11.9	3.15
2009–10	124	1632	1638	—	33	30.0	13.2	6.47
2010–11	154	1136	1597	—	29	35.0	10.4	5.29
2011–12	107	916	602	160	15	65.0	7.1	4.55
2012–13	137	1159	1241	65	108	9.3	9.5	5.01
2013–14	108	1272	654	44	46	21.8	6.5	6.96
2014–15	82	1230	645	16	72	13.9	8.1	4.94
2015–16	111	818	1187	206	60	16.6	12.5	4.40
2016–17	65	727	521	3	45	22.4	8.1	5.95
2017–18	115	919	1198	373	43	23.2	13.7	6.16
2018–19	63	430	1052	82	90	11.1	18.0	12.15
Average	155	1024	1607	119	36	39.8	10.4	5.20

*Trappers and skunks per trapper include hunters and their harvest. Set-days per skunk and skunks per 1000 set-days are based only on trapping activity, and do not include hunt harvest or hunter-days afield.

Statewide striped skunk* harvest trends, Utah 1982–2019.



*Prior to 2005–06, harvest and trapping activity included both striped skunk and spotted skunk.

Striped skunk trapping harvest statistics by county and ecoregion, Utah 2018–19.

County	n	Trappers afield	Trap harvest	Traps set	Trapping days	Set-days	Set-days / skunk	Skunks / 1000 set-days	Skunks / trapper
Beaver	0	0	—	—	—	—	—	—	—
Box Elder	4	9	266	116	488	11636	44	22.9	30.7
Iron	1	2	2	7	65	195	90	11.1	1.0
Juab	1	2	17	4	98	195	11	88.9	8.0
Millard	0	0	—	—	—	—	—	—	—
Tooele	1	2	0	54	326	8141	—	0.0	0.0
Great Basin totals	7	15	285	181	977	20168	71	14.2	18.8
Cache	4	9	174	495	421	53769	310	3.2	20.0
Davis	3	7	76	35	148	881	12	86.2	11.7
Morgan	0	0	—	—	—	—	—	—	—
Piute	0	0	—	—	—	—	—	—	—
Rich	0	0	—	—	—	—	—	—	—
Salt Lake	3	7	52	39	684	3300	63	15.8	8.0
Sanpete	0	0	—	—	—	—	—	—	—
Sevier	2	4	354	117	139	6547	19	54.0	81.5
Summit	2	4	11	4	52	52	5	208.3	2.5
Utah	1	2	0	2	65	65	—	0.0	0.0
Wasatch	1	2	17	13	33	195	11	88.9	8.0
Weber	1	2	22	22	792	7924	365	2.7	10.0
Rocky Mountain totals	17	37	706	727	2334	72734	103	9.7	19.1
Daggett	0	0	—	—	—	—	—	—	—
Duchesne	0	0	—	—	—	—	—	—	—
Uintah	0	0	—	—	—	—	—	—	—
Uintah Basin totals	0	0	—	—	—	—	—	—	—
Carbon	0	0	—	—	—	—	—	—	—
Emery	0	0	—	—	—	—	—	—	—
Garfield	1	2	20	9	195	782	40	25.0	9.0
Grand	0	0	—	—	—	—	—	—	—
Kane	0	0	—	—	—	—	—	—	—
San Juan	1	2	41	9	195	782	19	52.8	19.0
Washington	0	0	—	—	—	—	—	—	—
Wayne	0	0	—	—	—	—	—	—	—
Colorado Plateau totals	2	4	61	17	391	1563	26	38.9	14.0
Unknown	0	0	—	—	—	—	—	—	—
Statewide totals*	25	54	1052	926	3701	94465	90	11.1	19.4

*Statewide totals for sample size and trappers afield are not totals of the columns because trappers trapped multiple counties.

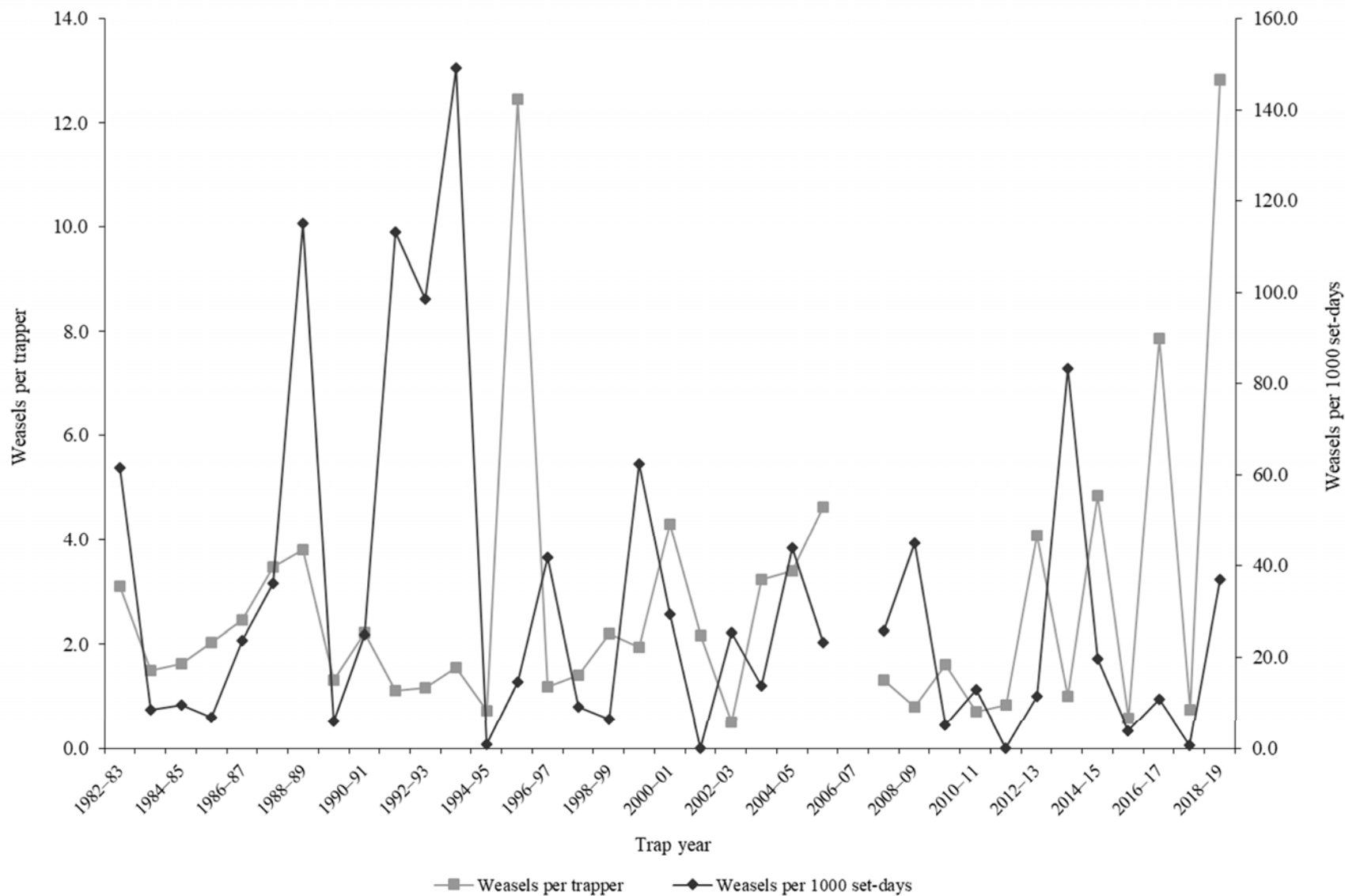
WEASEL

Statewide weasel harvest statistics*, Utah 1982–2019.

Trap year	Trappers afield	Incidental harvest	Trap harvest	Hunt harvest	Set-days / weasel	Weasels / 1000 set-days	Weasels / trapper	Pelt price (\$)
1982–83	19	—	59	—	16	61.5	3.1	1.00
1983–84	22	—	33	—	117	8.5	1.5	0.00
1984–85	46	—	75	—	106	9.4	1.6	0.75
1985–86	33	—	67	—	149	6.7	2.0	0.00
1986–87	50	—	123	—	42	23.6	2.5	1.50
1987–88	61	—	212	—	28	36.1	3.5	1.18
1988–89	24	—	91	—	9	115.0	3.8	0.25
1989–90	25	—	33	—	166	6.0	1.3	0.25
1990–91	14	—	31	—	40	24.8	2.2	0.30
1991–92	17	—	19	—	9	113.1	1.1	0.30
1992–93	24	—	28	—	10	98.6	1.2	0.30
1993–94	20	—	31	—	7	149.0	1.6	5.11
1994–95	18	—	13	—	1189	0.8	0.7	1.57
1995–96	24	—	299	—	69	14.6	12.5	3.08
1996–97	11	—	13	—	24	41.7	1.2	7.40
1997–98	20	—	28	—	111	9.0	1.4	3.03
1998–99	15	—	33	—	157	6.4	2.2	5.50
1999–00	34	—	66	—	16	62.4	1.9	—
2000–01	36	—	155	—	34	29.3	4.3	8.50
2001–02	6	—	13	—	0	—	2.2	—
2002–03	6	—	3	—	39	25.4	0.5	4.76
2003–04	18	—	58	—	73	13.8	3.2	—
2004–05	25	—	85	—	23	43.9	3.4	2.90
2005–06	41	—	190	—	43	23.3	4.6	—
2006–07	49	—	—	—	—	—	—	6.26
2007–08	11	—	15	—	39	25.6	1.3	2.99
2008–09	14	—	11	—	22	44.9	0.8	—
2009–10	29	13	47	—	196	5.1	1.6	7.64
2010–11	23	20	17	—	78	12.8	0.7	7.21
2011–12	25	4	0	21	—	0.0	0.8	4.58
2012–13	27	21	110	0	87	11.5	4.1	—
2013–14	3	10	3	0	12	83.3	1.0	5.00
2014–15	13	13	63	0	51	19.7	4.8	3.89
2015–16	26	15	11	4	258	3.9	0.6	3.06
2016–17	29	8	228	0	93	10.7	7.9	3.55
2017–18	19	7	12	2	1795	0.6	0.7	1.00
2018–19	11	26	139	2	27	37.0	12.8	—
Average	24	14	67	4	147	33.7	2.8	3.10

*Trappers and weasels per trapper include hunters and their harvest. Set-days per weasel and weasels per 1000 set-days are based only on trapping activity, and do not include hunt harvest or hunter-days afield.

Statewide weasel harvest trends, Utah 1982–2019.



APPENDIX: UTAH FURBEARER MANAGEMENT ECOREGIONS

