

UTAH DIVISION OF WILDLIFE RESOURCES

— 2018 UTAH —

BIG GAME

• APPLICATION •

GUIDEBOOK



CONTACT US

Turn in a poacher

Phone: 1-800-662-3337

Email: turninapoacher@utah.gov

Online: wildlife.utah.gov/utip

Division offices

Offices are open 8 a.m.–5 p.m.,
Monday through Friday.

Salt Lake City

1594 W North Temple
Box 146301
Salt Lake City, UT 84114-6301
801-538-4700

Central Region

1115 N Main Street
Springville, UT 84663
801-491-5678

Northeastern Region

318 N Vernal Avenue
Vernal, UT 84078
435-781-9453

Northern Region

515 E 5300 S
Ogden, UT 84405
801-476-2740

Southeastern Region

319 N Carbonville Road, Ste A
Price, UT 84501
435-613-3700

Southern Region

1470 N Airport Road
Cedar City, UT 84721
435-865-6100

Washington County Field Office

451 N SR-318
Hurricane, UT 84737
435-879-8694



CONTENTS

- 6 2018 season dates
- 6 Depredation hunts
- 7 2019 sportsman permits
- 8 Keep your license on your phone or tablet
- 9 Gathering shed antlers or horns
- 10 License, permit and program fees
- 12 Basic requirements
- 13 Carry your permit
- 14 Prepare to apply
- 15 Review the hunt tables
- 15 See maps and boundaries online
- 15 Obtain permission to hunt private property
- 15 Understand the drawing order
- 16 Why bonus points matter
- 17 Why preference points matter
- 17 Hunts with special circumstances
- 18 Multi-season hunts for deer and elk
- 19 Obtain up to three elk permits
- 20 Mandatory reporting
- 21 Apply for big game permits
- 21 Antlerless big game hunting
- 23 How many permits will be available in 2018?
- 24 After you apply
- 26 Lifetime license holders: Obtaining your permit in 2018
- 27 Dedicated Hunter Program
- 28 Changes to the Utah Hunter Mentoring Program
- 30 Opportunities for young hunters
- 31 Utah's Trial Hunting Program
- 32 Hunt maps
- 38 Hunt tables
- 60 CWMU hunts
- 71 Definitions

WHAT'S NEW?

Apply for hunts: You can apply for Utah's 2018 big game hunts from Jan. 25 to March 1, 2018. The results of the big game drawing will be available on or before May 31, 2018. For additional details, see page 21.

New early, any weapon buck deer hunts: In 2018, there will be new early general-season any weapon buck deer hunts on seven units. For details, see page 18.

Changes to the Hunter Mentoring program: The Utah Wildlife Board approved substantial changes to the Hunter Mentoring program for 2018. To learn more, see the article on page 28 or visit wildlife.utah.gov/mentoring.

Multi-season general bull elk hunts: Starting this year, you will have the opportunity to purchase a multi-season general bull elk permit (either spike or any bull) that allows you to hunt all three seasons. Permits will be available July 17, 2018. For details, see the *2018 Big Game Field Regulations Guidebook* in June 2018.

Late-season, limited-entry muzzle-loader deer hunts: There are 16 general-season units where late-season limited-entry muzzleloader buck deer hunts will occur this year. Some units have been added, and others have been removed. You can see the complete list of units in the hunt table on page 46.

New cactus buck hunt: Starting this year, you will be able to apply for a permit to hunt a cactus buck on the Paunsaugunt unit. A cactus buck is one that still has velvet covering at least 50 percent of its antlers during the season dates set by the Wildlife Board. You can find those dates in the hunt table on page 44.

KNOW THE LAWS

This guidebook—along with the *2018 Utah Big Game Field Regulations* guidebook (available in June 2018)—summarizes the rules and laws that regulate big game hunting in Utah. Although these books are convenient quick-reference documents for Utah big game regulations, they are not all-encompassing resources.

For an in-depth look at the state's big game hunting laws and rules, visit wildlife.utah.gov/rules.

You can use the references in this guidebook—such as Utah Admin. Rule R657-5-24 and Utah Code § 23-20-25—to search the Division's website for the detailed statute or rule that underpins the guidebook summary.

If you have questions about a particular rule, call or visit the nearest Division office.

Who makes the rules?

The Utah Wildlife Board passes the rules and laws summarized in this guidebook.

There are seven board members, and each serves a six-year term. Appointed by the governor, board members are not Division employees.

The Division's director serves as the board's executive secretary but does not have a vote on wildlife policies.

Before board members make changes to wildlife rules, they listen to recommendations from Division biologists. They also receive input from the public and various interest groups via the regional advisory council (RAC) process.

If you have feedback or suggestions for board members, you can find their contact information online at wildlife.utah.gov.

Wildlife Board members

Kevin Albrecht	Kirk Woodward, <i>Chair</i>
Calvin Crandall	Byron Bateman, <i>Vice Chair</i>
Steve Dalton	Mike Fowlks,
Karl Hirst	<i>Division Director &</i>
Donnie Hunter	<i>Executive Secretary</i>

New hunts: Starting in 2018, there will be new hunts for deer, elk, mountain goats and bighorn sheep. To see which hunts have been added, look for “new hunt” next to a hunt in the tables that start on page 38.

Find updated maps and boundaries:

Use the Utah Hunt Planner to find unit maps, boundaries and information on the hunts you want to apply for. The information in the Hunt Planner will be updated in June for the 2018 big game season, but you can use its historical data to research hunting units before you apply. To learn more, see page 15.

Unit boundary and name changes: Some hunt unit boundaries and names have changed this year, including boundaries for bison, pronghorn, bighorn sheep and mountain goat units. To see which units have changed, look for “boundary change” next to a hunt in the tables that start on page 38. To find maps and descriptions of the areas you want to hunt, visit wildlife.utah.gov/huntplanner.

Season date changes: Season dates change every year, so please check them carefully before applying for hunts. You can find season dates in the hunt tables that begin on page 38.

Research antlerless hunts online: In late May 2018, visit wildlife.utah.gov/guidebooks to find all of the information you’ll need to research Utah’s antlerless hunts. This information includes application dates, rules, hunt tables, boundaries and maps. The antlerless application period runs from May 31–June 21, 2018.

Permits for lifetime license holders: If you’re a lifetime license holder, see the box on page 26 for more information about obtaining your general-season deer permit.

Important reminders

Field regulations available in June: The *2018 Utah Big Game Field Regulations Guidebook* will be available from license agents and Division offices in June 2018. It will include the rules for both big game and antlerless hunting.

Download the app: To store your licenses on a phone or tablet, download the free Utah Hunting and Fishing app at wildlife.utah.gov/mobileapp.

Multi-season deer hunting for youth: In order to hunt all general deer seasons (archery, muzzleloader and any legal weapon), a youth must obtain a general-season any legal weapon permit. For details, see the article on page 30.

Hunting license required: Before you can apply for a 2018 big game permit, bonus point or preference point, you must have a valid Utah hunting or combination license. Please see page 13 for more information.

Mandatory reporting: Many big game hunters must report hunt information within 30 calendar days after the end of the hunting season (even if they did not harvest an animal). To see if you are required to report—and to learn how to report—see page 20 or visit wildlife.utah.gov/harvestreporting.

Collecting shed antlers: If you want to collect shed antlers and horns from Feb. 1 to April 15, you must complete an online course. You will receive a course-completion certificate that you must carry on your person while collecting the antlers and horns. For more information, see page 9.

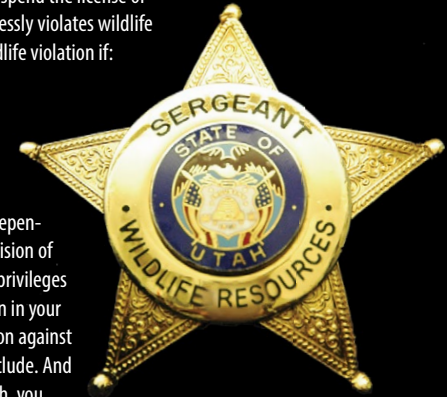
Guidebook correction: If errors are found in this guidebook after it is printed, the Division will correct them in the online copy. Visit wildlife.utah.gov/guidebooks to view digital versions of all the Division’s guidebooks.

Don’t lose your hunting and fishing privileges

If you commit a wildlife violation, you could lose the privilege of hunting and fishing in Utah. The Utah Division of Wildlife Resources can suspend the license of anyone who knowingly, intentionally or recklessly violates wildlife laws. Your license can be suspended for a wildlife violation if:

- You are convicted.
- You plead guilty or no contest.
- You enter a plea in abeyance or diversion agreement.

Suspension proceedings are separate and independent from criminal prosecution. The Utah Division of Wildlife Resources may suspend your license privileges whether or not the court considers suspension in your criminal case. You will be notified of any action against your privilege after criminal proceedings conclude. And remember, if your license is suspended in Utah, you may not be permitted to hunt or fish in most other states. (Visit wildlife.utah.gov/know-the-consequences.html to see a map of participating states.)



Protection from discrimination: The Division receives federal financial assistance from the U.S. Fish and Wildlife Service. Under Title VI of the Civil Rights Act of 1964, Section 504 of the Rehabilitation Act of 1973, Title II of the Americans with Disabilities Act of 1990, the Age Discrimination Act of 1975, Title IX of the Education Amendments of 1972, the U.S. Department of the Interior and its bureaus prohibit discrimination on the basis of race, color, national origin, age, disability or sex. If you believe that you have been discriminated against in any program, activity or facility, or if you desire further information, please visit www.doi.gov/pmb/eo/public-civil-rights.

Private lands: The Division cannot guarantee access to any private land. Under certain circumstances, you must obtain written permission from the landowner or the landowner’s authorized representative before hunting or trapping on private lands. For more information, please see Utah Code §§ 23-20-14 and 23-20-3.5.

Division funding: The Division is mostly funded by the sale of hunting and fishing licenses and through federal aid made possible by an excise tax on the sale of firearms and other hunting- and fishing-related equipment.

2018 SEASON DATES

General-season dates

Hunt	Dates
General archery deer	Aug. 18–Sept. 14
General muzzleloader deer	Sept. 26–Oct. 4
Early general any legal weapon (rifle) deer	Oct. 10–14
General any legal weapon (rifle) deer	Oct. 20–28
General archery any bull elk	Aug. 18–Sept. 14
General archery spike elk	Aug. 18–Sept. 7
General any legal weapon (rifle) spike and any bull elk	Oct. 6–18
General muzzleloader elk	Oct. 31–Nov. 8
Youth general (rifle) any bull elk	Sept. 15–23

Depredation hunts

When big game animals cause damage to agricultural crops, the Division may hold hunts that are not listed in this guide. These hunts are called depredation hunts. They may occur on short notice, involve small areas and are often limited to only a few hunters.

To apply for the depredation hunter pool, visit wildlife.utah.gov/depredation.

Extended archery season dates

Utah Admin. Rule R657-5-23

You do not need to apply for an additional permit to hunt during the extended archery seasons. As long as you obtain an archery deer or elk permit in 2018—and you complete the required extended archery ethics course—you may also hunt any of Utah's extended archery areas during the seasons listed below.

Limited-entry deer and elk archery hunters who don't harvest during the limited-entry season will also be allowed to hunt extended archery areas.

New this year: If you obtain a multi-season permit for general-season bull elk, you may also hunt during the extended-archery elk season.

The online archery ethics course is an annual requirement for all archers who want to hunt the extended areas and seasons. To take the course, visit wildlife.utah.gov/extendedarchery before the extended seasons begin. After you successfully complete the course, print your completion certificate and keep it with you while hunting.

To see maps and boundaries for all of the extended archery areas, visit wildlife.utah.gov/maps.

Hunt	Dates
Extended archery deer (either sex) in the Cache Laketown, Ogden, Uintah Basin, Wasatch Front and West Cache extended archery areas	Sept. 15–Nov. 30
Extended archery elk (either sex) in the Uintah Basin and Wasatch Front extended archery areas	Aug. 18–Dec. 15

Sportsman and statewide conservation permit season dates

Long season dates—and the ability to hunt almost every hunting unit in Utah—make sportsman permits the most prized permits offered to Utah's public hunters.

Only Utah residents can apply for sportsman permits. See the adjacent information box to learn more.

Hunt	Dates
Deer, elk and pronghorn on any open unit with archery equipment*‡	Aug. 18–31, 2018
Deer and elk on any open unit with any legal weapon*‡	Sept. 1, 2018–Jan. 15, 2019
Pronghorn and moose on any open unit with any legal weapon	Sept. 1–Nov. 15, 2018
Bighorn sheep, mountain goat and bison on any open unit with any legal weapon*‡	Sept. 1–Dec. 31, 2018
Turkey on any open unit	March 31–May 31, 2018
Black bear on any open unit	During the season dates listed in the <i>2018 Utah Black Bear Guidebook</i> for that unit
Cougar on any open unit or any harvest-objective unit that has been closed after meeting its objective	During the season dates listed in the <i>2017–18 Utah Cougar Guidebook</i> for that unit

* You may not take an elk or Rocky Mountain bighorn sheep on the Pilot Mtn hunting unit.

‡ Antelope Island is not an open unit. There are only a couple of permits that authorize hunting on the island. Those permits are listed in the hunt tables on page 43, page 56 and page 58.

2019 sportsman permits

Utah Admin. Rules R657-41 and R657-62-24

Next year, you could be the envy of every hunter you know. If you draw a 2019 Utah sportsman permit, you'll have one of the most exciting hunting permits the state offers. Hunters want these permits because:

- They typically have an extended hunting season.
- They allow you to hunt in nearly any unit across the state. (See the footnotes at the bottom of this page for additional information.)
- Only Utah residents can apply for them.

One sportsman permit is usually offered each year for each of the following species: buck deer, buck pronghorn, bull elk, bull moose, desert bighorn ram, Rocky Mountain bighorn ram, hunter's choice bison and hunter's choice mountain goat. Sportsman permits are also offered for black bear, cougar and wild turkey.

You can apply for a sportsman permit from Oct. 24 to Nov. 14, 2018. For more information about these permits, and the few restrictions that apply, please visit wildlife.utah.gov in late October 2018.

CWMU season dates

The Wildlife Board has established the following timeframes for hunting bucks and bulls on Cooperative Wildlife Management Units (CWMUs). Hunters should expect to hunt at least five days within these timeframes, although the CWMU operator may allow you to hunt additional days.

Before you apply for a CWMU permit, please visit wildlife.utah.gov/cwmu. You'll find detailed information about season dates, CWMU rules, hunt success and how to contact the operator. If you draw a permit, you **must** contact the CWMU operator to confirm your season dates.

Keep your license on your phone or tablet

We've made it easier for you to keep track of your hunting or combination license and know when it's about to expire.

With our convenient mobile app, you can now download your license to a smartphone or tablet.

If a conservation officer asks to see your license, you can produce the digital copy, which is just as valid as a paper license.

If you use the app, you will be able to easily see when your license expires.

The app is available for both Apple and Android devices. You can download it at wildlife.utah.gov/mobileapp.

Please remember that licenses are different from permits. If your hunt requires a permit, you must carry it with you while hunting.

Keep in mind that whether you draw or purchase a permit, you may not obtain more than one of each of the following permits during the 2018 big game season:

- Buck deer permit
- Bull elk permit
- Pronghorn permit (either buck or doe)

For example, if you draw a general-season buck deer permit—and then decide you want to hunt on a CWMU instead—you must surrender your general-season permit before the opening day of the season listed on your permit and before redeeming the CWMU voucher for a permit.

Important: Nonresidents may not apply for CWMU permits in the drawing. They can, however, obtain a permit voucher directly from the CWMU landowner or operator.

For more information on the CWMU program, see wildlife.utah.gov/cwmu.

Archery hunts for buck deer, buck pronghorn and bull elk	Aug. 18–Oct. 31, 2018
Any legal weapon (rifle) hunts for buck deer, buck pronghorn, bull elk and bull moose	Sept. 1–Oct. 31, 2018
Muzzleloader hunts for buck deer	Sept. 1–Oct. 31, 2018
Muzzleloader hunts for bull elk	Sept. 1–Nov. 10, 2018

Some deer and elk CWMUs have hunting seasons outside of these timeframes. For all CWMU hunt season dates, operator names and contact numbers, visit wildlife.utah.gov/cwmu.

Gathering shed antlers or horns

Utah Admin. Rule R657-5-21

You may gather shed antlers or horns—or parts of shed antlers or horns—statewide, but there is one seasonal requirement.

From Feb. 1 to April 15, 2018, you must have an antler-gathering certificate on your person while collecting shed antlers or horns. You can obtain this free certificate by visiting wildlife.utah.gov and completing an online course. You do not need an antler-gathering certificate at any other time of the year.

Please remember that if the winter weather becomes severe, the Division may choose to close antler gathering in hard-hit areas.

Important: The antler-gathering certificate does not authorize you to trespass on closed areas or private lands to collect shed antlers or horns.

Season dates

Online course completion certificate required* Feb. 1–April 15

* *You must complete this course every year.*

What if I find antlers or horns attached to a skull?

If you find a skull with the antlers or horns still attached, it's possible the animal was poached.

Do NOT pick up or move the skull, or disturb footprints or other evidence.

Instead, please take the following steps:

- Take photos from a couple of angles
- Pinpoint the location of the skull (preferably its GPS coordinates)
- Report your find to a Division office
- Provide key details in your report

The Division will send a conservation officer to investigate if the animal was poached. If it's clear that the animal died of natural causes, we may allow you to keep your find.

Possible habitat work in your hunt area

Throughout the year, the Division works with other government agencies—including the U.S. Forest Service and the Bureau of Land Management—to complete thousands of acres of habitat-improvement work on Utah's public lands.

Those projects range from plant removal to prescribed burns and from helicopter reseeding to large-scale planting projects. They help restore habitat for mule deer, elk, sage-grouse and other species, giving them the food and cover they need to thrive on the landscape.

Please be aware that projects occur across the state, year round. This means that sometimes a project may occur in a portion of your hunt area, during the hunt.

If this is something you're concerned about, you may want to contact the appropriate land-management agency before you apply for a particular hunt area. They may be able to give you a tentative list of projects for the coming year.

You can also see a list of past, current and proposed restoration projects at watershed.utah.gov.

LICENSE, PERMIT AND PROGRAM FEES

License fees

Resident license fees

365-day hunting license (age 13 and under)	\$11
365-day hunting license (ages 14–17)	\$16
365-day hunting license (ages 18–64)	\$34
365-day hunting license (age 65 and older)	\$25
Multi-year hunting license (age 18 and older)	\$33 per year, up to five years
365-day combination* license (ages 14–17)	\$20
365-day combination* license (ages 18–64)	\$38
365-day combination* license (age 65 and older)	\$29
Multi-year combination* license (age 18 and older)	\$37 per year, up to five years

* A combination license allows you to hunt or fish in Utah and also allows you to fish with a second pole.

Nonresident license fees

365-day hunting license (age 17 and younger)	\$25
365-day hunting license (age 18 and older)	\$65
Multi-year hunting license (up to five years for age 18 and older)	\$64 per year, up to five years
365-day combination* license (age 17 and younger)	\$29

Nonresident license fees (continued)

License	Fee
365-day combination* license (age 18 and older)	\$85
Multi-year combination* license (age 18 and older)	\$84 per year, up to five years

* A combination license allows you to hunt or fish in Utah and also allows you to fish with a second pole.

Permit fees

Please keep in mind that if you participate in the hunt drawing, you will also be charged a \$10 nonrefundable application fee for each species or bonus point you apply for. You will not be charged a permit fee unless you draw a permit.

Deer permit fees

General deer	\$40	\$268
CWMU	\$40	\$268
CWMU management buck deer	\$80	\$468
Premium CWMU	\$168	\$568
Limited entry	\$80	\$468
Multi-season limited entry	\$145	\$845
Premium limited entry	\$168	\$568
Multi-season premium limited entry	\$305	\$1,025
Management buck deer	\$80	\$468

Deer permit fees (continued)

Elk permit fees

General any bull or spike bull	\$50	\$393
Multi-season general any bull or spike bull	\$150	\$700
Youth any bull	\$50	\$393
CWMU	\$285	\$800
Limited entry	\$285	\$800
Multi-season limited entry	\$513	\$1,505

Pronghorn permit fees

CWMU	\$55	\$293
Limited entry	\$55	\$293

Moose permit fees

Bull moose	\$413	\$1,518
CWMU bull moose	\$413	\$1,518

Bison permit fees

Bison (not on Antelope Island)	\$413	\$1,518
Bison on Antelope Island	\$1,110	\$2,615

Bighorn sheep permit fees

Desert bighorn	\$513	\$1,518
----------------	-------	---------

Permit	Resident	Nonres.
Rocky Mountain bighorn	\$513	\$1,518

Mountain goat permit fees

Mountain goat	\$413	\$1,518
---------------	-------	---------

Dedicated Hunter Program fees

Adult		
Residents		\$195
Nonresidents		\$1,047
Lifetime license holders		\$75

Youth (12 to 17 years old)

Residents		\$120
Nonresidents		\$814

BASIC REQUIREMENTS

Are you planning to hunt big game in Utah this year? Before you apply for a permit, make sure you meet Utah's age, hunter education, license and permit requirements.

Are you old enough?

Utah Code § 23-19-22

To hunt big game in Utah, you must be at least 12 years old.

If you are least 11 years old, you can apply for or obtain any big game permits for which you are eligible, including limited-entry and once-in-a-lifetime permits. Any 11-year-olds who apply must be 12 by Dec. 31, 2018.

Remember, you cannot hunt until you are 12 years old.

If you're younger than 18, you can apply to participate in the Utah Hunter Mentoring Program. For details on the program, see the article on page 28 or visit wildlife.utah.gov/mentoring.

If you're 12 years old or older, you can also participate in the Trial Hunting Program. For details, see the box on page 31.

Adults must accompany young hunters

Utah Code § 23-20-20

While hunting big game, a person under 16 years old must be accompanied by his or her parent, legal guardian or other responsible person who is 21 years of age or older and who has been approved by the parent or guardian.

The Division encourages adults to be familiar with hunter education guidelines or to complete the hunter education course before accompanying youth into the field.

While in the field, the youth and the adult must remain close enough for the adult to see and provide verbal assistance to the young hunter. Using electronic devices, such as walkie-talkies or cell phones, does not meet this requirement.

Have you passed hunter education?

Utah Code § 23-19-11 & Utah Admin. Rule R657-23

If you were born after Dec. 31, 1965, you must provide proof that you've passed a hunter education course approved by the Division before you can apply for or obtain a hunting license or a big game permit.

The only exception to this law is for individuals who are participating in the Division's Trial Hunting Program. You can find details about the program on page 31 or by visiting wildlife.utah.gov/trial.

Proof of hunter education

You can prove that you've completed hunter education by obtaining a hunter education card (called a "blue card" in Utah) or if you have a verified hunter education number on file with the Division. The number is assigned when you complete hunter education and your blue card is issued.

How to take hunter education

To get started, you should visit wildlife.utah.gov/huntereducation. You'll see links to a complete list of traditional or online hunter education courses. Follow the instructions on the website to sign up for a course.

If you need assistance, please contact your local Division office or call 801-538-4727.

When you complete the course, your instructor will sign your course certificate, which will then become your hunting license. With a valid hunting license, you can also apply for or obtain permits in the Division's hunt drawings.

Approximately four to six weeks after you complete the course, you will receive your blue card by mail.

You should also keep the following in mind:

- Hunters under the age of 16 must be accompanied by an adult while hunting.
- Regardless of when a student graduates, all hunting regulations (such as season dates and bag limits) will apply.
- Hunters who are planning to hunt out of state should allow enough time for their hunter education card to arrive in the mail.

New to Utah?

If you become a Utah resident, and you've completed a hunter education course in another state, province or country, you must obtain a Utah blue card before you can buy a resident hunting license. You can obtain a Utah blue card at any Division office by providing proof that you've completed a hunter education course approved by the Division.

Do you have a license?

Utah Code §§ 23-19-1, 23-19-22 and 23-20-3

You must have a current Utah hunting or combination (hunting and fishing) license before you can apply for any big game permits, bonus points or preference points. Licenses are available at wildlife.utah.gov and from license agents and Division offices.

Be sure to take a look at the date on your license before you apply for any permits or points. As long as your license is valid on the date you submit your application, you don't have to purchase a new license for the actual hunt.

For example, assume that your license expires on June 21, 2018. If you apply before that date, you do not have to purchase a new license for your hunt in the fall. All hunting and combination licenses are valid for 365 days from the date of purchase.

Do you have a permit?

Utah Admin. Rule R657-62-18

To participate in any of Utah's big game hunts, you need to obtain a hunting permit. See page 14 to learn about the types of permits available in 2018.

Utah issues most of its big game permits through the big game hunt drawing. To apply for this drawing, visit wildlife.utah.gov between Jan. 25 and March 1, 2018. For additional details and important dates, see *Apply for big game permits* on page 21.

Carry your permit

If you are successful in obtaining a big game permit, you must have it on your person while hunting. You cannot alter your license or permit, nor can you sell, transfer or loan either of them to another person.

Exercise courtesy and patience

As much as you'd like to have Utah's backcountry to yourself, you share it with campers, hikers, photographers and other hunters. Some of those hunters are after big game—just like you—while others are pursuing black bear, forest grouse and other species.

Everyone shares the landscape, and we encourage you to be understanding and patient when encountering others on public land.

PREPARE TO APPLY

Utah Admin. Rule R657-62-18

To participate in Utah's big game hunts, you need to obtain hunting permits. The Division distributes most of those permits through the big game hunt drawing. You can apply for the drawing from Jan. 25–March 1, 2018. It will be easier to apply if you are thoroughly prepared before you begin the application process.

Residency and hunt options

Utah Code 23-13-2(37) and 23-13-2(13)

Before you apply for any big game hunts, it's important to know whether you are a legal resident of the state of Utah. Although residents and nonresidents can apply for many of the same types of permits, there are some differences. See the definition of residency on page 71 to determine whether you are a resident or a nonresident.

Residents

If you're a Utah resident, you can apply to hunt one of the following:

- Buck deer—multi-season premium limited-entry, premium limited-entry, multi-season limited-entry, limited-entry, management buck deer, cactus buck and CWMU hunts
- Bull elk—multi-season limited-entry, limited-entry and CWMU hunts
- Buck pronghorn—limited-entry and CWMU hunts

In addition to applying for a limited-entry permit for one of those three species, you can also apply for one once-in-a-lifetime permit.

You may draw only one of the above permits each year.

Nonresidents

If you're a nonresident, you can apply to hunt all of the following:

- Buck deer—multi-season premium limited-entry, premium limited-entry, multi-season limited-entry, limited-entry, management buck deer and cactus buck hunts

- Bull elk—multi-season limited-entry and limited-entry hunts
- Buck pronghorn—limited-entry hunts
- All once-in-a-lifetime species for which you are eligible

You may draw only one of the above permits each year.

Note: If you obtain a nonresident big game permit (not an antlerless permit), it also serves as a nonresident fishing license.

Both residents and nonresidents

There are additional hunting opportunities available to both residents and nonresidents. Even if you apply for one or more of the hunts listed above, you can also apply for one of the following general-season deer permits:

- An archery buck deer permit
- An any legal weapon (rifle) buck deer permit
- A muzzleloader buck deer permit

As you apply for various permits, please remember that you may not obtain more than one buck deer or one bull elk permit each year. For example, if you obtain a limited-entry deer permit, you may not buy a general-season deer permit.

You also may not obtain more than one pronghorn, moose, mountain goat, bison or bighorn sheep permit in the same year.

Do your research

It's important to nail down the details before applying for a hunt. You don't want to accidentally apply for the wrong hunting unit or season. We've provided information in this

guidebook and links to online tools that can help you research your options.

Review the hunt tables

All of the big game hunts you can apply for are listed in the tables that begin on page 38. You will need to use the hunt numbers associated with the hunts in order to apply for permits. Please keep in mind that hunt names and boundaries may change from year to year.

See maps and boundaries online

You'll find detailed maps and boundary descriptions for all big game hunts at wildlife.utah.gov/huntplanner.

Research hunts on the Utah Hunt Planner

There's a useful online tool that can help you plan a successful, enjoyable hunt. The Utah Hunt Planner is located at wildlife.utah.gov/huntplanner.

During the application period (Jan. 25–March 1, 2018), you can research past hunts on the Utah Hunt Planner. You can find all kinds of in-depth information on Utah's big game hunting units, including notes from the managing biologists and details about the units' big game populations, accessibility, habitat, safety and weather.

Then, starting in June 2018, you can visit wildlife.utah.gov/huntplanner to see updated information for the 2018 season. If you obtain a big game permit in 2018, this is a tool that can help you have a great experience during your hunt.

Obtain permission to hunt private property

The Division cannot guarantee access to private land, and the agency does not have the names of landowners who own property where hunts occur.

Under certain circumstances, you must obtain written permission from the landowner

or the landowner's authorized representative before hunting or trapping on private lands. Ideally, you should have permission **before** you apply for a permit.

You can download a landowner permission card at https://wildlife.utah.gov/law/pdf/landowner_permission_card.pdf.

Understand the drawing order

Utah Admin. Rule R657-62-18

A better understanding of the drawing order may affect which permits you decide to apply for. Big game permits are drawn in the following order:

- First—Buck deer (multi-season premium limited-entry, premium limited-entry, multi-season limited-entry, limited-entry, CWMU, cactus and management buck deer)
- Second—Bull elk (multi-season limited-entry, limited-entry and CWMU)
- Third—Buck pronghorn (limited-entry and CWMU)
- Fourth—Once-in-a-lifetime permits
- Fifth—General buck deer (Lifetime License holders)
- Sixth—General buck deer (Dedicated Hunters)
- Seventh—General buck deer (youth)
- Eighth—General buck deer
- Last—Youth any bull elk

Because of the order in which permits are drawn, you will **not** be included in the drawing for a once-in-a-lifetime permit if you draw any of the following permits:

- Buck deer (multi-season premium limited-entry, premium limited-entry, multi-season limited-entry, limited-entry, CWMU, cactus or management buck deer)
- Bull elk (multi-season limited-entry, limited-entry or CWMU)
- Buck pronghorn (limited-entry or CWMU)

For more information, please visit wildlife.utah.gov/drawings.

Know how to apply as a group

Utah Admin. Rule R657-62-7 and R657-62-18

If you want to apply with your friends and family as a group, there are some important things to consider before selecting your hunt choices.

Both residents and nonresidents can apply together. However, if you're a Utah resident and you decide to apply with a nonresident, make sure nonresident permits are available for each hunt your group is applying for. If nonresident permits are not available for a hunt your group is applying for, the nonresident and everyone else in the group—including the Utah residents—will not be allowed to draw for that hunt unit.

Up to **four hunters** can apply together for multi-season premium limited-entry, premium limited-entry, multi-season limited-entry, limited-entry, general-season deer, cactus buck and resident CWMU deer, elk or pronghorn permits. Group applications are not accepted for management buck deer hunts or once-in-a-lifetime hunts.

If your group is successful in the drawing, all of the applicants in your group who have valid applications will receive a permit.

Important: If you're a youth and you want an opportunity to draw one of the permits reserved for youth, do **not** apply in a group with an adult. Young hunters can apply as part of a youth-only group. Up to **two youth hunters** can apply together for the youth any bull elk hunts, and up to **four youth hunters** can apply together for general-season deer hunts. Please see page 30 for more information about Utah's youth hunting opportunities.

Why bonus points matter

Utah Admin. Rule R657-62-8

Utah's bonus point system has been put in place to increase your chance of drawing a big game permit. Knowing more about the points system may be helpful during the application process.

Every time you apply for a multi-season premium limited-entry, premium limited-entry, multi-season limited-entry, limited-entry, management buck deer, CWMU or once-in-a-lifetime permit, but you don't draw one, you receive a bonus point for that species.

Applying for a general buck deer permit will not affect your ability to obtain a bonus point for limited-entry deer. If you draw a general buck deer permit, you'll still receive a bonus point if you are unsuccessful in drawing a multi-season premium limited-entry, premium limited-entry, multi-season limited-entry, limited-entry, or CWMU deer permit.

Applying for a bonus point

Even if you're not going to hunt in 2018, you can still receive a bonus point by applying for one. To apply for a bonus point, select the appropriate bonus point code on your application and pay the \$10 application fee. The 2018 bonus point application period is Jan. 25–March 15, 2018.

Because you apply for bonus points by species, instead of by hunt, you may apply for a bonus point even if a particular hunt isn't being offered in 2018.

To apply for a bonus point, you must be eligible for the hunt the bonus point will be awarded for. For example, if you're eligible for a limited-entry buck deer permit, you're eligible to apply for a limited-entry buck deer bonus point.

Residents

If you're a resident, you may apply for one of the following:

- One limited-entry permit and one once-in-a-lifetime permit
- One limited-entry permit and one once-in-a-lifetime bonus point
- One limited-entry bonus point and one once-in-a-lifetime permit
- One limited-entry bonus point and one once-in-a-lifetime bonus point

You may NOT apply for the following:

- A permit and a bonus point for the same species
- More than one limited-entry bonus point
- More than one once-in-a-lifetime bonus point

Nonresidents

If you're a nonresident, you may apply for permits or bonus points for all limited-entry and once-in-a-lifetime species. However, you may not apply for a permit and a bonus point for the same species.

Please remember that you may draw only one limited-entry or once-in-a-lifetime permit each year.

How your bonus points work

For detailed information on how your bonus points work in the drawing, visit wildlife.utah.gov/huntingpermits.

Why preference points matter

Utah Admin. Rule R657-62-9

Utah's preference point system gives hunters who don't draw a general-season buck deer permit a better chance at drawing one the following year.

Each time you apply for a general-season buck deer permit and don't draw one, you'll receive a preference point. Please keep in mind that preference points are given for a

species—deer, in this case—and not for a particular hunting unit.

Applying for a preference point

Even if you won't be hunting general-season buck deer in 2018, you can still apply for a preference point by selecting code GDR on your application and paying a \$10 application fee. The application period is Jan. 25–March 15, 2018.

If you draw a general-season deer permit, you will lose your preference points and not receive an additional preference point.

How your preference points work in the drawing

For detailed information on how your preference points work in the drawing, visit wildlife.utah.gov/huntingpermits.

Hunts with special circumstances

Most of the permits you can draw through the big game hunt drawing are pretty self-explanatory. There are a couple of hunts, however, that require additional explanation.

Management buck deer hunt

Utah Admin. Rule R657-5-46

A "management buck" is a buck deer with three points or less on at least one antler, above and including the first fork, but not including the eye guard. The eye guard does not count as a point. A point is a projection that's longer than one inch, measured from its base to its tip, including damaged or broken antlers.

Management buck deer permits are available through the Utah big game drawing. Thirty percent of the management buck deer permits are available to hunters who'll be 17 years of age or younger on July 31, 2018. Thirty percent are available to hunters who'll be 65

years of age or older on Aug. 18, 2018. The remaining 40 percent are available to hunters of all ages. Group applications are not accepted.

If you are successful in the drawing, you must complete an online orientation course before you will receive your permit.

Important: If you obtain a management buck deer permit, that is the **only** buck deer permit you may obtain for the 2018 season. You will lose your bonus points and incur a waiting period of two years.

Why a management buck deer hunt?

Removing excess bucks on the Paunsaugunt and Henry Mountains premium limited-entry units—while protecting the larger bucks in the herds—is the goal of the management buck deer hunt.

These two units have high buck-to-doe ratios. Harvesting smaller-antlered bucks will preserve trophy-class bucks and provide more room for does. Having more does in the herds will result in more fawns being born. Having more fawns will help ensure that these herds remain strong and healthy into the future.

Paunsaugunt cactus buck hunt (new)

Utah Admin. Rule R657-5-47

Starting this year, you will be able to apply for a permit to hunt a cactus buck on the Paunsaugunt unit. A cactus buck is one that still has velvet covering at least 50 percent of its antlers during the season dates set by the Wildlife Board.

There are quite a few cactus bucks on the Paunsaugunt unit, and they have unique antler growth that many hunters find fascinating.

For season dates, see the hunt table on page 44.

Early general-season buck deer hunts (new)

For 2018, the Utah Wildlife Board approved new early general-season any weapon buck

deer hunts on the following general-season buck deer units:

- Chalk Creek/East Canyon/Morgan-South Rich
- Fillmore
- Kamas
- Nine Mile
- Pine Valley
- Plateau, Fishlake
- Zion

These hunts will run from Oct. 10–14, 2018. The goal of these hunts is to reduce crowding and give hunters the opportunity to hunt deer and general-season elk at the same time.

For a list of the units where these hunts will occur, see page 39.

Multi-season hunts for deer and elk

Utah Admin Rules R657-5-26 and R657-5-32

Utah offers multi-season hunts for deer or elk on select limited-entry or premium limited-entry units during all the seasons listed in the hunt tables of this guidebook. Those tables begin on page 38. Permits for those hunts are available through the big game drawing.

And this year—for the first time—eligible hunters may purchase a multi-season general bull elk permit (any bull or spike) and hunt all three of the general elk seasons. Those permits will be available beginning at 8 a.m. MDT on July 17, 2018 at wildlife.utah.gov and from license agents and Division offices.

For detailed information about the multi-season general elk hunts, see the *2018 Utah Big Game Field Regulations Guidebook* in June 2018.

Please keep in mind that when you hunt multiple seasons, you must use the appropriate weapon type for the season.

Late-season, limited-entry muzzleloader deer hunts

For 2018, the Utah Wildlife Board approved late-season, limited-entry muzzleloader deer hunts on 16 general-season buck deer units. Some of the participating units are different than in previous years.

For a complete list of the units where these hunts will occur, see page 46.

These hunts will occur at the same time as the general muzzleloader elk hunt, running from Oct. 31–Nov. 8, 2018.

Please keep in mind that if you are successful in obtaining a permit for one of these hunts, you will lose your bonus points and incur a waiting period of two years.

Are you eligible to apply?

Before you submit your application, make sure that you are eligible to participate in the big game drawing.

You may not apply if...

You may not apply for a hunting permit, a bonus point or a preference point if any of the following conditions apply:

- Your big game hunting privilege has been suspended.
- You're under a waiting period for the species you want to apply for.
- You've already obtained a permit for the once-in-a-lifetime species you want to apply for.
- You drew any type of limited-entry or once-in-a-lifetime permit in 2017, but you didn't submit a harvest report.
- You don't have a hunting or combination license.

Additionally, if you are a CWMU landowner association member or a spouse or dependent child, you cannot apply for your own CWMU permits in the big game drawing.

Waiting periods

Waiting periods keep successful applicants out of the drawing for a few years and give other hunters a better chance at drawing a permit.

Buck deer, buck pronghorn and bull elk permits

Utah Admin. Rule R657-62-18

The waiting period for buck deer and buck pronghorn is two years. The bull elk waiting period is five years. Waiting periods do not apply to general-season permits.

Note: A youth may draw only one youth any bull elk permit during his or her years as a youth.

Once-in-a-lifetime permits

Utah Admin. Rule R657-62-18

Bull moose, bison, Rocky Mountain bighorn sheep, desert bighorn sheep and mountain goat permits are once-in-a-lifetime permits. If you obtain a once-in-a-lifetime permit for a particular species, such as a bull moose, you may not apply for that permit again in the drawing.

Obtain up to three elk permits

Utah Admin. Rule R657-5-33

In Utah, a hunter can obtain up to three elk permits each year:

- A maximum of one permit can be for a bull elk.
- A maximum of one antlerless elk permit can be obtained through the antlerless hunt drawing.
- A maximum of two antlerless elk permits can be obtained over the counter.

Even though you cannot obtain antlerless elk permits until the summer of 2018, knowing about this opportunity may affect which permits you apply for in the big game drawing.

You can still apply for other once-in-a-lifetime species that you haven't drawn a permit for.

Also, if you've been convicted of unlawfully taking a once-in-a-lifetime species, you may never apply for or obtain a permit for that species again.

Permits obtained after the drawing

Utah Admin. Rule R657-62-15

If you're under a waiting period for a certain species, you can still obtain any permit that remains for that species after the drawing, but your waiting period will start all over again.

For example, if you have two years left on your bull elk waiting period, and you buy a limited-entry bull elk permit that remains available after the drawing, you'll begin a new five-year waiting period that will prevent you from applying for a limited-entry bull elk permit for the next five years.

If you're not already under a waiting period—and you obtain a limited-entry or once-in-a-lifetime permit that remains available after the drawing—you will lose your bonus points for that species and incur a waiting period.

CWMU, conservation, expo and landowner permits

Utah Admin. Rule R657-62-18

If you obtain a CWMU, conservation, expo or landowner permit from a private individual or organization—for deer, elk or pronghorn—you won't be subject to a waiting period.

If you obtain a once-in-a-lifetime permit in the expo drawing or from a conservation organization, you may not apply for that species in any other public drawing.

The rules regarding CWMU and once-in-a-lifetime permits are as follows:

- If you have obtained a once-in-a-lifetime permit in the public drawing in the past,

you may buy a once-in-a-lifetime permit from a landowner or a CWMU operator.

- If you have not obtained a once-in-a-lifetime permit in the public drawing—and you buy a once-in-a-lifetime permit from a landowner or a CWMU operator—you may not obtain a permit in the public drawing for that species in the future.

Keep in mind that whether you draw or purchase a permit, you may not obtain more than one of each of the following permits during the 2018 big game season:

- Buck deer permit
- Bull elk permit
- Pronghorn permit (either buck or doe)

For example, if you draw a general-season buck deer permit—and then decide you want to hunt on a CWMU instead—you must surrender your general-season permit before the opening day of the season listed on your permit and before redeeming the CWMU voucher for a permit.

Mandatory reporting

Reporting your hunt information is important—and required—even if you didn't harvest an animal. You must report your hunt information for any type of limited-entry or once-in-a-lifetime hunt within 30 days of the end of the hunt.

If you don't meet this requirement, you won't be allowed to apply the following year for once-in-a-lifetime, multi-season premium limited-entry, premium limited-entry, multi-season limited-entry, limited-entry, management buck deer or CWMU permits, or for bonus points.

If you didn't submit your 2017 harvest survey questionnaire by the deadline, you can restore your eligibility to apply for a 2018 permit by paying a \$50 late fee. For more information, call 1-800-221-0659.

APPLY FOR BIG GAME PERMITS

Utah Admin. Rule R657-62-18

To participate in any of Utah's big game hunts, you need a hunting permit. Your first, and possibly only, chance to obtain one of these permits is through the state's big game drawing. You will avoid unnecessary stress if you plan ahead and apply for the drawing before the last day of the application period.

Important dates

If you are planning to apply for a 2018 big game permit, please be aware of the following dates and deadlines.

January 25: Apply online

Starting Jan. 25, 2018, you can visit wildlife.utah.gov to apply for the following items:

- Big game hunting permits
- Bonus points
- Preference points

You can also apply by calling any Division office.

Antlerless big game hunting

Antlerless hunting is the primary tool biologists use to control the size of big game herds.

This year, you can apply online for one or more antlerless big game permits from May 31–June 21, 2018. Plan on visiting wildlife.utah.gov in late May 2018 to see which permits are available.

Antlerless drawing results will be available on or before July 12. If any antlerless permits remain available after the drawing, you can purchase them beginning at 8 a.m. MDT on July 26.

The *2018 Utah Big Game Field Regulations Guidebook* will be available in June. That guidebook will contain information you can use in the field during your big game and antlerless hunts.

To apply for a resident permit, you must be a resident on the date the permit is purchased. May 31, 2018 is considered the purchase date of the permit and the date by which you must establish residency in the state of Utah. Please see the resident definition on page 71 to learn whether you qualify as a resident.

American Express, Discover, MasterCard and VISA credit or debit cards may be used as payment, and they must be valid through June 2018. You can also use a pre-paid credit card.

Please keep in mind that the Division is not responsible for any bank charges incurred for the use of credit or debit cards. To change the credit or debit card associated with your application, call 1-800-221-0659.

When you submit your application, you'll be charged a \$10 application fee for each species or point you applied for. If you haven't bought your license yet, you'll also be charged a license fee. You will not be charged a permit fee unless you draw a permit.

March 1: Deadline for permit applications

You must apply online or by phone no later than March 1, 2018. There's an 11 p.m. MST deadline for online applications and a 5 p.m. MST deadline for phone applications. To apply, simply visit wildlife.utah.gov or call any Division office.

Correcting and resubmitting your application

Did you make a mistake in your online permit application? Simply withdraw your original online application and submit a new, correct application before 11 p.m. MST on March 1, 2018.

You must have your confirmation number, your customer ID and your date of birth in order to withdraw your application. For each new application you submit, you will be charged a \$10 nonrefundable application fee.

If you need help with your online application, please call any Division office before 5 p.m. MST on March 1. A Division employee will be available to assist you.

March 15: Deadline for bonus/preference points

If you plan to apply for bonus or preference points only, the deadline is March 15, 2018 at 11 p.m. MDT.

To apply for a bonus point, select the appropriate bonus point code on your application.

To apply for a preference point, select code GDR on your application.

There is a \$10 application fee for each bonus/preference point you apply for.

For more information about bonus points, see page 16, and for more information about preference points, see page 17.

Visit wildlife.utah.gov to submit your application, and please remember that you must have a valid Utah hunting or combination license in order to apply for a point.

March 15: Deadline for withdrawing your application

If you decide not to hunt, you can withdraw your online permit application at no additional cost until 11 p.m. MDT on March 15, 2018.

Please remember that the \$10 application fee is not refundable.

May 31: Drawing results available

You'll be emailed your drawing results on or before May 31, 2018. You can also learn your drawing results by visiting wildlife.utah.gov or by calling 1-800-221-0659. For more information about obtaining your results, see page 24.

To protect applicants' privacy—and to comply with changes in governmental records access laws—you'll receive access to only your own drawing results.

If you draw a permit, you'll receive your permit in the mail in July.

If your permit requires you to complete an online orientation course, you must first complete the course in order to receive your permit.

Please be aware that if you receive your permit, and then the credit card you used for payment is refused, your permit is not valid.

July 17: Remaining limited-entry permits available

Any limited-entry permits remaining after the big game drawing will be available beginning July 17, 2018 at 8 a.m. MDT. You can buy permits at wildlife.utah.gov and at license agent locations and Division offices.

Remaining permits are available on a first-come, first-served basis. You must have a valid hunting license or a combination license to buy one of these permits.

A license agent list is available at wildlife.utah.gov/licenseagents. Before you visit any of the agents, contact them to verify their hours of operation.

July 17: General-season bull elk permits available

All general-season bull elk permits—including the new multi-season general bull elk permits—may be obtained beginning at 8 a.m. MDT on July 17, 2018 at wildlife.utah.gov and from license agents and Division offices.

All general-season bull elk permits (muzzleloader and any legal weapon) are available on a first-come, first-served basis. General-season bull elk archery permits are unlimited. For additional information on multi-season general elk permits, see page <?>.

You must have a valid hunting license or a combination license to buy a general-season bull elk permit of any kind.

You can see a list of license agents at wildlife.utah.gov/licenseagents. Before you visit any of the agents, contact them to verify their hours of operation.

July 19: Remaining general-season buck deer permits available (any legal weapon, archery and muzzle-loader)

Any general-season buck deer permits remaining after the drawing may be obtained beginning at 8 a.m. MDT on July 19, 2018 at wildlife.utah.gov and from license agents and

How many permits will be available in 2018?

The Utah Wildlife Board will set permit numbers for both the big game and antlerless hunts when it meets in late April 2018.

This meeting occurs after the big game application period and before the antlerless application period.

Division biologists will collect and analyze the most recent harvest and population data before making their recommendations to the Wildlife Board.

Division offices. Remaining permits are available on a first-come, first-served basis. You must have a valid hunting license or a combination license to buy one of these permits.

A license agent list is available at wildlife.utah.gov/licenseagents. Before you visit any of the agents, contact them to verify their hours of operation.

July 19: Additional youth archery deer permits available

Youth archery deer permits may be obtained beginning at 8 a.m. MDT on July 19, 2018 at wildlife.utah.gov and from license agents and Division offices. These permits are part of an additional opportunity available to youth hunters. For details, see page 30.

You must have a valid hunting license or a combination license to buy one of these permits.

A license agent list is available at wildlife.utah.gov/licenseagents. Before you visit any of the agents, contact them to verify their hours of operation.

**UTAH
HUNTING &
FISHING APP**

IT'S FREE!

Download from Wildlife.Utah.Gov/MobileApp

AFTER YOU APPLY

Utah Admin. Rule R657-62-18

After the application period ends, the hunt drawing occurs. We appreciate your patience throughout the drawing process and in awaiting your results.

Updating your personal information

A lot of things can change while you're waiting to find out if you drew a permit. If you need to update your name (because of marriage or divorce), your address or the credit card number associated with your application, please call 1-800-221-0659.

Obtaining your drawing results

You will receive an email that contains your drawing results on or before May 31, 2018. You can also learn your drawing results by visiting wildlife.utah.gov or by calling 1-800-221-0659.

To protect applicants' privacy—and to comply with governmental records access laws—you'll receive access to only your own drawing results.

Obtaining permits

If you draw a permit, you'll receive your permit in the mail in July.

If your permit requires you to complete an online orientation course, you must first complete the course in order to receive your permit.

Please be aware that if you receive your permit, and then the credit card you used for payment is refused, your permit is not valid.

Surrendering permits

Utah Code § 23-19-38 and Utah Admin. Rule R657-42-4

What happens if you obtain a permit and then realize you won't be able to use it?

As long as your season hasn't started, you should consider surrendering the permit. It's an easy process, and it's important if you want to keep your bonus points or preference points and avoid a waiting period.

Depending on the type of permit you have, there are different rules for surrendering it. For more information on surrendering a permit, please see wildlife.utah.gov/refund.

Individuals

How permit surrender affects bonus points

If you draw a multi-season premium limited-entry, premium limited-entry, multi-season limited-entry, limited-entry or once-in-a-lifetime permit—and then you decide to surrender it—we strongly encourage you to return it to the Division before the season opens.

If you surrender it before the start of the season, you'll get all of your bonus points back, and you'll receive a bonus point for that year.

You'll also be eligible to purchase a reallocated permit or any other available permit you're eligible to obtain.

How permit surrender affects preference points

If you obtain a general-season buck deer permit, and then you find that you won't be able to use it, you can get your preference points back if you surrender the permit before the season begins. You'll also receive a preference point for that year and be eligible to purchase reallocated permits or permits that are still available after the drawing.

How permit surrender affects waiting periods

If you surrender your permit before the season begins, the waiting period will be waived. General-season permits are not subject to waiting periods.

Groups

How permit surrender affects bonus points

If you obtain a permit through a group application—and then you decide to surrender it—you will not have your bonus points reinstated or earn a new point unless your entire group meets the following conditions:

- All group members must surrender their permits
- Permit surrenders must occur more than 30 days before the start of the season

Members of the group may not surrender their permits individually unless the surrender occurs because of:

- Activation in the military
- An injury that will prevent the individual from hunting
- Death

How permit surrender affects preference points

If you obtain a permit through a group application—and then you decide to surrender it—you will not have your preference points reinstated or earn a new point unless all group members surrender their permits before the season begins.

Members of the group may not surrender their permits individually unless the surrender occurs because of:

- Activation in the military
- An injury that will prevent the individual from hunting
- Death

How permit surrender affects waiting periods

If members of a group surrender their permits before the season begins, the waiting period will be waived. General-season permits are not subject to waiting periods.

Dedicated Hunters

If you're enrolled in the Dedicated Hunter

program, and you decide to surrender your permit, you must return it to the Division before Aug. 18, 2018 (the day the general-season archery deer hunt opens).

Private landowner and CWMU permit holders

If you obtain a limited-entry landowner permit or a CWMU permit, you can surrender it.

Limited-entry private landowner permits must be surrendered before the season the permit was issued for opens.

To surrender a CWMU permit, there are two options. If possible, you should surrender your CWMU permit before the CWMU season opening dates listed on page 8.

To surrender your permit after the CWMU season has started, but before you hunt, you and the CWMU operator must both sign an affidavit stating that you did not hunt with the permit. Both of the signatures must be notarized.

After the signatures are notarized, submit the affidavit and the unused permit to the Division.

Permit refunds and exchanges

Utah Code § 23-19-38 & Utah Admin. Rule R657-42

The Division rarely issues refunds for permits, licenses or certificates of registration, but there are some exceptions. To see if you're eligible for a refund, visit wildlife.utah.gov/refund.

Permit exchanges

You may exchange your general-season deer or elk permit for one that's available in another unit, but it must be for the same species and sex. For example, you cannot exchange a buck deer permit for a bull elk permit. The exchange must occur before the season opening date on the permit you originally obtained.

You must also pay a \$10 handling fee to exchange a permit.

Duplicate licenses

Utah Code § 23-19-10 & Utah Admin. Rule R657-5-5

If your unexpired license or permit is destroyed, lost or stolen, you can obtain a duplicate from a Division office or a license agent for \$10 or half of the price of the original license or permit, whichever is less.

To obtain a duplicate limited-entry or once-in-a-lifetime permit, you must visit a Division office.

Lifetime license holders: Obtaining your permit in 2018

Utah Admin. Rule R657-17

Lifetime licenses were last sold in Utah in 1994. If you are one of the lucky hunters who has a lifetime license, the Division wants you to obtain your deer permit as quickly and smoothly as possible:

- To select the unit you want to hunt, you'll need to complete the online lifetime license questionnaire. The questionnaire is located in the 2018 big game application. Visit wildlife.utah.gov between Jan. 25 and March 1, 2018 to access the application, complete the questionnaire and select a unit.
- If you do not complete the lifetime license questionnaire by March 1, 2018, you will automatically receive

If you drew a license or permit, but you never received it, the Division may waive the fee that you would normally have to pay to get a duplicate.

Keep in mind that you can also use the Utah Hunting and Fishing app to legally carry hunting or combination licenses on a phone or tablet for all the members of your family. To download the app, visit wildlife.utah.gov/mobileapp.

a permit for the unit you selected in 2017.

- If you did not select a general-season unit in the past three years, and you do not complete your lifetime license questionnaire in 2018, you may obtain a remaining permit at a Division office, starting July 19.
- If your address changes, please notify the Division immediately.
- If you are already enrolled in the Dedicated Hunter program, you are not required to complete your lifetime license questionnaire.
- If you are planning to apply for the Dedicated Hunter program in 2018, you must complete your lifetime license questionnaire.

For more information about lifetime licenses, visit wildlife.utah.gov/lifetime.

DEDICATED HUNTER PROGRAM

Utah Admin. Rule R657-38

Enjoy more hunting opportunities and help Utah wildlife.

Want to spend more time hunting deer in Utah? You should consider applying for the Dedicated Hunter Program.

The Division holds an annual drawing to fill open spots in the three-year program.

If your name is drawn—and you meet the program requirements—you can expect great hunting opportunities and a chance to help Utah wildlife.

Benefits and requirements

As a Dedicated Hunter, you have the opportunity to obtain a deer permit every year for three years. Even better, you can hunt all of the general deer seasons—archery, muzzle-loader and any legal weapon (rifle)—with your Dedicated Hunter permit.

New this year: If your unit is one of the seven units that's holding both an early general-season buck deer hunt and a traditional general-season buck deer hunt, you may hunt during both seasons. See page 18 for the list of applicable units.

In exchange for this opportunity, you agree to complete the following requirements:

- Participate in all three years of the program
- Pass an online wildlife conservation and ethics course
- Complete a minimum of 32 service hours on Division-approved wildlife conservation projects during the three-year period
- Harvest only two deer during your three-year enrollment period

To learn more about the program, please visit wildlife.utah.gov/dh.

Joining the program

Online applications for the Dedicated Hunter Program will be accepted from Jan. 25–March 1, 2018 (as part of the 2018 big game application process). You may apply as an individual or in groups of up to four hunters.

Results of the drawing will be available no later than May 31, 2018.

To apply for the program, please visit wildlife.utah.gov/dh and click “How to apply” in the menu at the right of the page. The links will walk you through the program's online orientation course and lead you to the online application.

The orientation is easy, but you must complete it before you will be able to apply for the program. Do not wait until the last minute, or you might not have time to complete the course and submit your application before the deadline.

There is a \$10 application fee to apply for the program. If your application is drawn, you will be charged the appropriate program fee. (Dedicated Hunter program fees are listed with license and permit fees on page 10.)

Dedicated Hunter preference points

If you apply for the Dedicated Hunter Program in 2018, and you aren't selected to participate, you'll receive a Dedicated Hunter preference point. These preference points give applicants a better chance at getting into the program in future years.

If you don't want to join the program this year—but you'd like a better chance at participating in the future—you can choose to apply for a Dedicated Hunter preference point.

CHANGES TO THE UTAH HUNTER MENTORING PROGRAM

Program expansion will give participants additional flexibility and opportunity.

Launched in 2014, the Utah Hunter Mentoring program has given many Utahns the chance to mentor their children and grandchildren on big game hunts.

The program has been extremely popular and, as a result, the Utah Legislature and Utah Wildlife Board approved the following changes to the program in 2017:

- Expanding mentoring opportunities beyond family
- Allowing mentors to share most hunting permits
- Increasing the number of youth that can be mentored on a single permit

- Allowing youth to go on mentored hunts and also hunt on permits they draw
- Simplifying age requirements for all participants

These changes will expand the program and provide additional high-quality mentored hunting opportunities to Utah's youth.

Expanding mentoring opportunities beyond family

Any qualifying adult (age 21 or older) can mentor a resident youth, as long as the child's parent or legal guardian provides written permission.

is the permit holder and is legally required to be with the minor when an animal is harvested and tagged.

- **Exchanging mentors or minors.** The minor and mentor who enrolled together must hunt together. You cannot trade mentors or minors with others in your hunting group. Minors are breaking the law if they harvest multiple animals of the same species with multiple mentors — and you could be held accountable.

If you have questions about how the Hunter Mentoring program works, don't just take your best guess. Visit wildlife.utah.gov/mentoring or call one of the Division offices listed on page 2.

You want your mentored hunt to be an experience the youth will never forget — not one they remember because you came home with a ticket.

Don't risk a ticket!

The Utah Hunter Mentoring program holds the potential for many positive memories. Don't ruin your hunt by receiving a citation for not following the law.

Some of the most common violations seen in the program are as follows:

- **Neglecting to enroll in the program.** Before you can share your permit with a youth, you must both be officially enrolled in the Hunter Mentoring program. That requires you to download the application from wildlife.utah.gov/mentoring well in advance of your hunt. Then, you must return the completed application to a Division office.
- **Allowing the minor to hunt without the mentor present.** The minor and mentor must stay together throughout the hunt. The mentor

Instead of just limiting the mentor role to parents and grandparents, this change now allows extended family members, friends, neighbors and other trusted individuals to serve as hunting mentors.

Allowing mentors to share most hunting permits

A mentor can now share any hunting permit — not just big game — with the exception of swan and sandhill crane, which are subject to conflicting federal regulations.

Permits that are now eligible for sharing under the Hunter Mentoring program include all big game permits as well as black bear, cougar, turkey, greater sage-grouse and sharp-tailed grouse permits.

Increasing the number of mentored youth

A mentor can now identify up to four minors to be mentored on a single permit.

Important: Only one of those minors may be mentored at a time, and only one animal may be harvested per permit.

For example, Madison draws a general-season deer permit and wants to mentor her two nephews during the hunt. She must first enroll in the program with both children (after obtaining written permission from their parents), and then she can take them hunting during the season listed on the permit. She is only allowed to mentor one of the boys at a time. As soon as someone — either Madison or one of the boys — harvests the species listed on the permit, the hunt must end.

Allowing mentored youth to also hunt on permits they draw

Although youth are limited to one mentored hunt of the same species and sex per year, they may also hunt on any permits they personally draw.

For example, Paul draws a limited-entry buck deer permit and chooses to mentor his granddaughter on the hunt. She has also drawn a general-season buck deer permit. She can legally go on both deer hunts because one of them is a mentored opportunity. She would not be allowed, however, to go on another mentored hunt for a buck deer during the same hunt year.

Simplifying age requirements

Adults who are 21 years old or older may apply to become mentors in the Hunter Mentoring program. They can be Utah residents or nonresidents, but they must also be otherwise eligible to hunt and possess a valid hunting permit that they intend to share with a qualifying minor.

A youth is eligible to participate in the Hunter Mentoring program if he or she is a Utah resident and under the age of 18 when applying for the program. The minor must also be otherwise eligible to hunt.

Enrolling online

You can enroll in the Hunter Mentoring program by visiting wildlife.utah.gov/mentoring and downloading the application form. You must return it to a Division office.

If you have additional questions about the mentoring program, please visit wildlife.utah.gov/mentoring or call one of the Division offices listed on page 2.

OPPORTUNITIES FOR YOUNG HUNTERS

In 2018, there are many options for youth who want to hunt big game.

Hunting deer for multiple seasons

Twenty percent of Utah's general-season buck deer permits are allocated to youth in the big game drawing. For the purposes of big game hunting, you are a youth if you will be 17 years of age or younger on July 31.

If you are a youth who enjoys hunting big game species, you may have some extra hunting possibilities this fall. It all depends on what type of general-season deer permit you obtain.

Any legal weapon permits

If you obtain a general-season any legal weapon deer permit, you may use archery tackle to archery hunt the unit listed on your permit from Aug. 18–Sept. 14, 2018.

If you haven't harvested a deer by the time the archery season ends, you may hunt the

same unit during the general muzzleloader and general any legal weapon deer seasons (including the early-season hunt, if it's offered on your unit), using the appropriate equipment.

You also have the option of using archery tackle to hunt in the extended archery areas as soon as they are open to hunting. Just be sure to complete the archery ethics course available at wildlife.utah.gov/extendedarchery.

Muzzleloader permits

If you obtain a general-season muzzleloader deer permit, you may hunt *only* during the general muzzleloader season, which runs from Sept. 26–Oct. 4, 2018. You must use muzzleloader equipment and hunt the unit listed on your permit. You may not hunt during the general archery or any legal weapon seasons.

Archery permits

If you obtain a general-season archery deer permit, you may hunt *only* during the general archery deer season and the extended archery deer season.

During the general season, you may hunt in the unit printed on your permit.

During the extended season, you may hunt in the extended archery areas after completing the archery ethics course available at wildlife.utah.gov/extendedarchery.

You may not hunt during the general muzzleloader or general any legal weapon seasons.

If you don't draw an archery permit in the big game drawing, you may be able to purchase one.

Additional youth archery permits will be available at 8 a.m. on July 19 at wildlife.utah.gov and from license agents and Division offices. The Utah Wildlife Board has approved additional permits specifically for young archers.

Youth-only groups

If you will be 17 years of age or younger on July 31, 2018, you can participate in the youth drawing for general-season deer permits. You can submit an application as an individual hunter or as a member of a youth-only group.

Youth deer permits

Up to four young hunters can apply to hunt together in a youth-only group. This allows youth to hunt buck deer in the same unit with siblings, friends and cousins.

When you apply in a youth-only group for the general-season deer hunt, all hunters must meet the age requirement or the application will not be processed with the other youth applications.

Utah's Trial Hunting Program

Utah Admin. Rule R657-68

Have you ever wanted to bring your spouse, child or friend along on a hunt and give them a chance to try hunting? Now, they can join you on your next big game hunt.

Utah's Trial Hunting Program allows anyone over the age of 12 to try hunting for a few years—while accompanied by a licensed hunter over the age of 21—before taking a Hunter Education course.

The program applies to hunts for many different species, including general-season deer and elk. To sign up for the program or to learn more about it, visit wildlife.utah.gov/trial.

If you're successful in drawing permits, please remember that all hunters under the age of 16 must be accompanied in the field by a parent, legal guardian or responsible person 21 years of age or older. For details on this requirement, see page 12.

For more information on applying as a youth-only group, please visit wildlife.utah.gov/huntingpermits.

Youth elk permits

Up to two youths may apply together for youth any bull elk permits, but both individuals must be 17 years of age or younger on July 31, 2018.

A youth who obtains a permit for this hunt may harvest either a bull elk or an antlerless elk. For information about season dates, see page 6.



Helping wildlife makes you look good.
(Now your car wants a turn.)



Elk



Mule deer skull








Kestrel

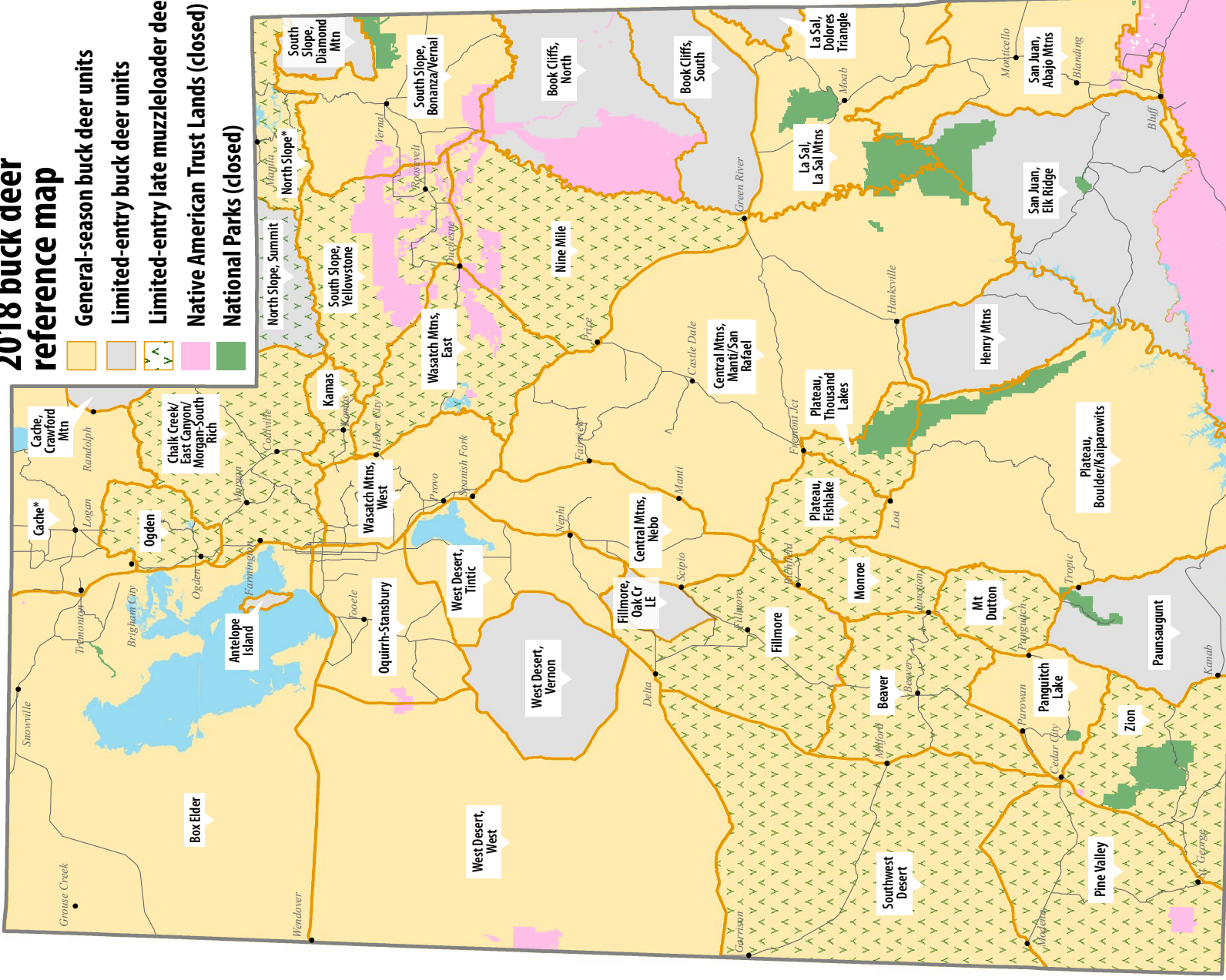


Cutthroat trout

Choose any one of the four license plate options above or head to wildlife.utah.gov/plates to find out more.

2018 buck deer reference map

-  General-season buck deer units
-  Limited-entry buck deer units
-  Limited-entry late muzzleloader deer units
-  Native American Trust Lands (closed)
-  National Parks (closed)

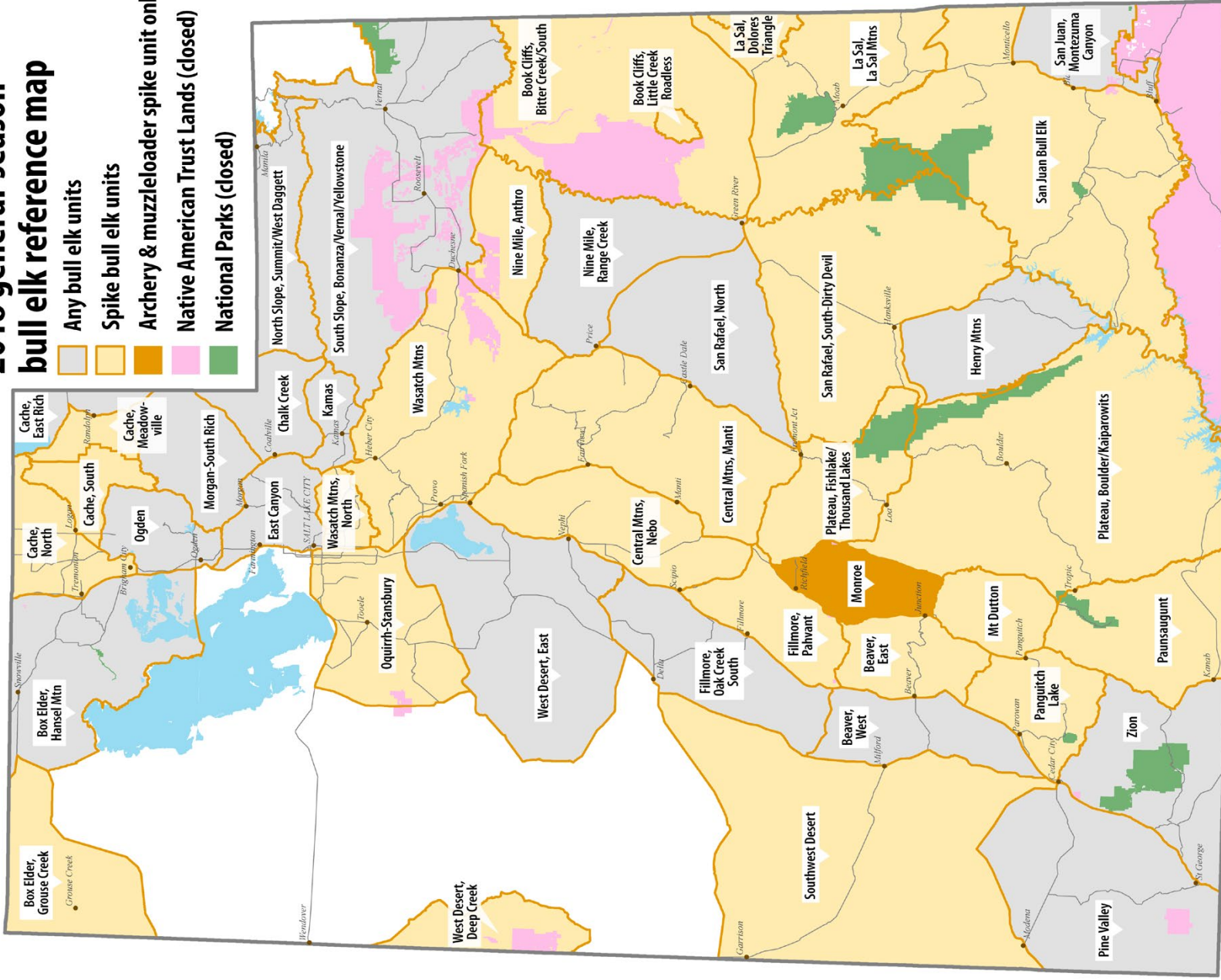


*During the general season, the Cache unit also includes the Cache, Crawford Mtn unit and the North Slope unit includes the North Slope, Summit unit.

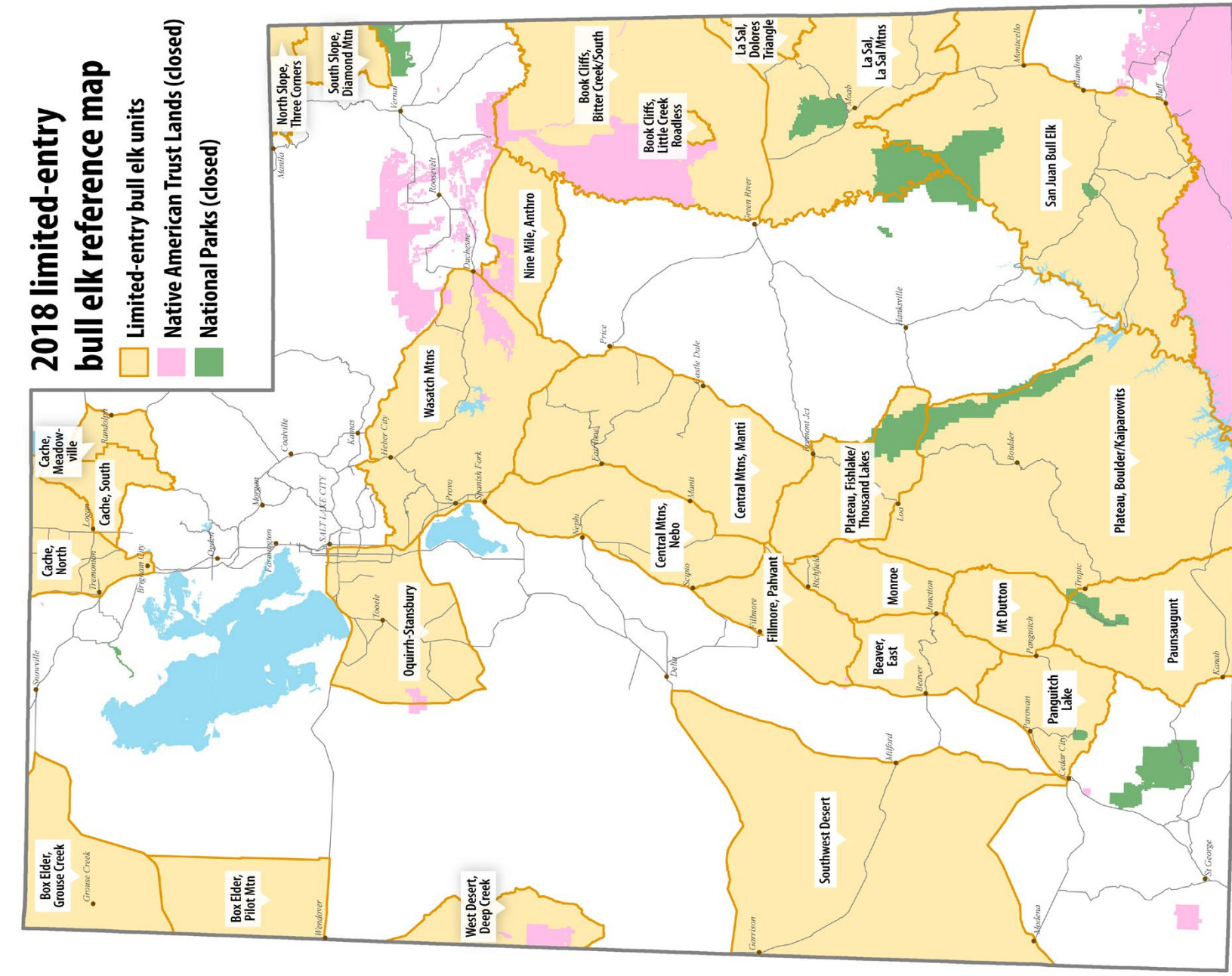
This map is for general reference only. Please visit wildlife.utah.gov/maps for detailed boundary descriptions. All hunt units **exclude** deer CWMUs, Native American Trust Lands, National Parks and other areas closed to hunting.

**2018 general-season
bull elk reference map**

- Any bull elk units
- Spike bull elk units
- Archery & muzzleloader spike unit only
- Native American Trust Lands (closed)
- National Parks (closed)



This map is for general reference only. Please visit wildlife.utah.gov/maps for detailed boundary descriptions. All hunt units **exclude** elk CWMUs, Native American Trust Lands, National Parks and other areas closed to hunting.



This map is for general reference only. Please visit wildlife.utah.gov/maps for detailed boundary descriptions. All hunt units **exclude** elk CWMUs, Native American Trust Lands, National Parks and other areas closed to hunting.

HUNT TABLES

The Division does not guarantee access to any private or public land. Hunt unit boundaries may include private property or other excluded areas. Hunters must research land accessibility before hunting.

General-season buck deer

Permit fee: Resident \$40, Nonresident \$268

Use the hunt number to apply. Deer preference point code: GDR

Archery hunts

Hunt name	Hunt #	Season dates
Beaver	DB1500	Aug. 18–Sept. 14
Box Elder	DB1501	Aug. 18–Sept. 14
Cache (includes Cache, Crawford Mtn unit)	DB1502	Aug. 18–Sept. 14
Central Mtns, Manti/San Rafael	DB1503	Aug. 18–Sept. 14
Central Mtns, Nebo	DB1504	Aug. 18–Sept. 14
Chalk Creek/East Canyon/Morgan-South Rich	DB1505	Aug. 18–Sept. 14
Fillmore	DB1506	Aug. 18–Sept. 14
Kamas	DB1508	Aug. 18–Sept. 14
La Sal, La Sal Mtns	DB1509	Aug. 18–Sept. 14
Monroe	DB1510	Aug. 18–Sept. 14
Mt Dutton	DB1511	Aug. 18–Sept. 14
Nine Mile	DB1512	Aug. 18–Sept. 14
North Slope (includes North Slope, Summit unit)	DB1513	Aug. 18–Sept. 14
Ogden	DB1514	Aug. 18–Sept. 14
Oquirrh-Stansbury	DB1515	Aug. 18–Sept. 14
Panguitch Lake	DB1516	Aug. 18–Sept. 14
Pine Valley	DB1517	Aug. 18–Sept. 14
Plateau, Boulder/Kaiparowits	DB1518	Aug. 18–Sept. 14
Plateau, Fishlake	DB1519	Aug. 18–Sept. 14
Plateau, Thousand Lakes	DB1520	Aug. 18–Sept. 14
San Juan, Abajo Mtns	DB1521	Aug. 18–Sept. 14
South Slope, Bonanza/Vernal	DB1522	Aug. 18–Sept. 14
South Slope, Yellowstone	DB1523	Aug. 18–Sept. 14
Southwest Desert	DB1524	Aug. 18–Sept. 14
Wasatch Mtns, East	DB1525	Aug. 18–Sept. 14

HUNT TABLES

The Division does not guarantee access to any private or public land. Hunt unit boundaries may include private property or other excluded areas. Hunters must research land accessibility before hunting.

General-season buck deer (continued)

Archery hunts

Hunt name	Hunt #	Season dates
Wasatch Mtns, West	DB1526	Aug. 18–Sept. 14
West Desert, Tintic	DB1527	Aug. 18–Sept. 14
West Desert, West	DB1528	Aug. 18–Sept. 14
Zion	DB1529	Aug. 18–Sept. 14

Any legal weapon — early hunts

Hunt name	Hunt #	Season dates
Chalk Creek/East Canyon/Morgan-South Rich (new hunt)	DB1590	Oct. 10–Oct. 14
Fillmore (new hunt)	DB1591	Oct. 10–Oct. 14
Kamas (new hunt)	DB1592	Oct. 10–Oct. 14
Nine Mile (new hunt)	DB1593	Oct. 10–Oct. 14
Pine Valley (new hunt)	DB1595	Oct. 10–Oct. 14
Plateau, Fishlake (new hunt)	DB1596	Oct. 10–Oct. 14
Zion (new hunt)	DB1597	Oct. 10–Oct. 14

Any legal weapon

Hunt name	Hunt #	Season dates
Beaver	DB1530	Oct. 20–Oct. 28
Box Elder	DB1531	Oct. 20–Oct. 28
Cache (includes Cache, Crawford Mtn unit)	DB1532	Oct. 20–Oct. 28
Central Mtns, Manti/San Rafael	DB1533	Oct. 20–Oct. 28
Central Mtns, Nebo	DB1534	Oct. 20–Oct. 28
Chalk Creek/East Canyon/Morgan-South Rich	DB1535	Oct. 20–Oct. 28
Fillmore	DB1536	Oct. 20–Oct. 28
Kamas	DB1538	Oct. 20–Oct. 28
La Sal, La Sal Mtns	DB1539	Oct. 20–Oct. 28
Monroe	DB1540	Oct. 20–Oct. 28
Mt Dutton	DB1541	Oct. 20–Oct. 28

HUNT TABLES

The Division does not guarantee access to any private or public land. Hunt unit boundaries may include private property or other excluded areas. Hunters must research land accessibility before hunting.

General-season buck deer (continued)

Any legal weapon

Hunt name	Hunt #	Season dates
Nine Mile	DB1542	Oct. 20–Oct. 28
North Slope (includes North Slope, Summit unit)	DB1543	Oct. 20–Oct. 28
Ogden	DB1544	Oct. 20–Oct. 28
Oquirrh-Stansbury	DB1545	Oct. 20–Oct. 28
Panguitch Lake	DB1546	Oct. 20–Oct. 28
Pine Valley	DB1547	Oct. 20–Oct. 28
Plateau, Boulder/Kaiparowits	DB1548	Oct. 20–Oct. 28
Plateau, Fishlake	DB1549	Oct. 20–Oct. 28
Plateau, Thousand Lakes	DB1550	Oct. 20–Oct. 28
San Juan, Abajo Mtns	DB1551	Oct. 20–Oct. 28
South Slope, Bonanza/Vernal	DB1552	Oct. 20–Oct. 28
South Slope, Yellowstone	DB1553	Oct. 20–Oct. 28
Southwest Desert	DB1554	Oct. 20–Oct. 28
Wasatch Mtns, East	DB1555	Oct. 20–Oct. 28
Wasatch Mtns, West	DB1556	Oct. 20–Oct. 28
West Desert, Tintic	DB1557	Oct. 20–Oct. 28
West Desert, West	DB1558	Oct. 20–Oct. 28
Zion	DB1559	Oct. 20–Oct. 28

Muzzleloader hunts

Hunt name	Hunt #	Season dates
Beaver	DB1560	Sept. 26–Oct. 4
Box Elder	DB1561	Sept. 26–Oct. 4
Cache (includes Cache, Crawford Mtn unit)	DB1562	Sept. 26–Oct. 4
Central Mtns, Manti/San Rafael	DB1563	Sept. 26–Oct. 4
Central Mtns, Nebo	DB1564	Sept. 26–Oct. 4
Chalk Creek/East Canyon/Morgan-South Rich	DB1565	Sept. 26–Oct. 4

HUNT TABLES

The Division does not guarantee access to any private or public land. Hunt unit boundaries may include private property or other excluded areas. Hunters must research land accessibility before hunting.

General-season buck deer (continued)

Muzzleloader hunts

Hunt name	Hunt #	Season dates
Fillmore	DB1566	Sept. 26–Oct. 4
Kamas	DB1568	Sept. 26–Oct. 4
La Sal, La Sal Mtns	DB1569	Sept. 26–Oct. 4
Monroe	DB1570	Sept. 26–Oct. 4
Mt Dutton	DB1571	Sept. 26–Oct. 4
Nine Mile	DB1572	Sept. 26–Oct. 4
North Slope (includes North Slope, Summit unit)	DB1573	Sept. 26–Oct. 4
Ogden	DB1574	Sept. 26–Oct. 4
Oquirrh-Stansbury	DB1575	Sept. 26–Oct. 4
Panguitch Lake	DB1576	Sept. 26–Oct. 4
Pine Valley	DB1577	Sept. 26–Oct. 4
Plateau, Boulder/Kaiparowits	DB1578	Sept. 26–Oct. 4
Plateau, Fishlake	DB1579	Sept. 26–Oct. 4
Plateau, Thousand Lakes	DB1580	Sept. 26–Oct. 4
San Juan, Abajo Mtns	DB1581	Sept. 26–Oct. 4
South Slope, Bonanza/Vernal	DB1582	Sept. 26–Oct. 4
South Slope, Yellowstone	DB1583	Sept. 26–Oct. 4
Southwest Desert	DB1584	Sept. 26–Oct. 4
Wasatch Mtns, East	DB1585	Sept. 26–Oct. 4
Wasatch Mtns, West	DB1586	Sept. 26–Oct. 4
West Desert, Tintic	DB1587	Sept. 26–Oct. 4
West Desert, West	DB1588	Sept. 26–Oct. 4
Zion	DB1589	Sept. 26–Oct. 4

HUNT TABLES

The Division does not guarantee access to any private or public land. Hunt unit boundaries may include private property or other excluded areas. Hunters must research land accessibility before hunting.

Dedicated Hunter buck deer

Permit fees: Resident Adult \$195, Resident Youth \$120,
Nonresident Adult \$1,047, Nonresident Youth \$814

Use the hunt number to apply. Dedicated Hunter point code: **DHL**

Hunt name	Hunt #
Beaver	DB1769
Box Elder	DB1770
Cache (includes Cache, Crawford Mtn unit)	DB1771
Central Mtns, Manti/San Rafael	DB1772
Central Mtns, Nebo	DB1773
Chalk Creek/East Canyon/Morgan-South Rich	DB1774
Fillmore	DB1775
Kamas	DB1777
La Sal, La Sal Mtns	DB1778
Monroe	DB1779
Mt Dutton	DB1780
Nine Mile	DB1781
North Slope (includes North Slope, Summit unit)	DB1782
Ogden	DB1783
Oquirrh-Stansbury	DB1784
Panguitch Lake	DB1785
Pine Valley	DB1786
Plateau, Boulder/Kaiparowits	DB1787
Plateau, Fishlake	DB1788
Plateau, Thousand Lakes	DB1789
San Juan, Abajo Mtns	DB1790
South Slope, Bonanza/Vernal	DB1791
South Slope, Yellowstone	DB1792
Southwest Desert	DB1793
Wasatch Mtns, East	DB1794
Wasatch Mtns, West	DB1795

HUNT TABLES

The Division does not guarantee access to any private or public land. Hunt unit boundaries may include private property or other excluded areas. Hunters must research land accessibility before hunting.

Dedicated Hunter buck deer (continued)

Hunt name	Hunt #
West Desert, Tintic	DB1796
West Desert, West	DB1797
Zion	DB1798

Premium limited-entry buck deer

Permit fee: Resident \$168, Nonresident \$568

Use the hunt number to apply. Deer bonus point code: **DEE**

Archery hunts

Hunt name	Hunt #	Season dates
Henry Mtns*	DB1000	Aug. 18–Sept. 14
Paunsaugant	DB1001	Aug. 18–Sept. 14

Any legal weapon (rifle) hunts

Hunt name	Hunt #	Season dates
Antelope Island	DB1002	Nov. 14–Nov. 21
Henry Mtns	DB1003	Oct. 20–Oct. 28
Paunsaugant	DB1004	Oct. 20–Oct. 31

Muzzleloader hunts

Hunt name	Hunt #	Season dates
Henry Mtns *	DB1005	Sept. 26–Oct. 4
Paunsaugant	DB1006	Sept. 26–Oct. 4

* A management buck hunt will occur during a portion of this premium limited-entry hunt. See page 44 for a list of all management buck deer hunts and season dates.

BLACK TEXT: At least one nonresident permit • BLUE TEXT: Resident permits only

HUNT TABLES

The Division does not guarantee access to any private or public land. Hunt unit boundaries may include private property or other excluded areas. Hunters must research land accessibility before hunting.

Premium limited-entry buck deer (continued)

Multi-season hunts

Permit fee: Resident \$305, Nonresident \$1,025

Use the hunt number to apply. Deer bonus point code: DEE

Hunt name	Hunt #	Season dates
Henry Mtns*	DB1007	All Limited Entry Seasons
Paunsaugunt	DB1008	All Limited Entry Seasons

Management and cactus buck deer

Permit fee: Resident \$80, Nonresident \$468

Use the hunt number to apply. Use bonus point code: DEE

Management buck hunts

Hunt name	Hunt #	Season dates
Henry Mtns (archery)	DB1051	Aug. 25–Sept. 14
Henry Mtns (muzzleloader)	DB1052	Sept. 29–Oct. 4
Henry Mtns (any legal weapon)	DB1009	Oct. 29–Nov. 2
Paunsaugunt (any legal weapon)	DB1010	Nov. 1–Nov. 5

Cactus buck hunt

Hunt name

Paunsaugunt (new hunt)	DB1058	Nov. 6–Nov. 18
------------------------	--------	----------------

Limited-entry buck deer

Permit fee: Resident \$80, Nonresident \$468

Use the hunt number to apply. Use bonus point code: DEE

Archery hunts

Hunt name	Hunt #	Season dates
Book Cliffs	DB1011	Aug. 18–Sept. 14
Fillmore, Oak Creek LE	DB1012	Aug. 18–Sept. 14
La Sal, Dolores Triangle	DB1013	Nov. 3–Nov. 16

*A management buck hunt will occur during a portion of this premium limited-entry hunt. See the list of all management buck deer hunts and season dates in the table on this page.

BLACK TEXT: At least one nonresident permit • BLUE TEXT: Resident permits only

HUNT TABLES

The Division does not guarantee access to any private or public land. Hunt unit boundaries may include private property or other excluded areas. Hunters must research land accessibility before hunting.

Limited-entry buck deer (continued)

Archery hunts

Hunt name	Hunt #	Season dates
San Juan, Elk Ridge	DB1014	Aug. 18–Sept. 14
South Slope, Diamond Mtn	DB1015	Aug. 18–Sept. 14
West Desert, Vernon	DB1016	Aug. 18–Sept. 14

Any legal weapon (rifle) hunts

Hunt name	Hunt #	Season dates
Book Cliffs, North	DB1017	Oct. 20–Oct. 28
Book Cliffs, South	DB1018	Oct. 20–Oct. 28
Fillmore, Oak Creek LE	DB1019	Oct. 20–Oct. 28
La Sal, Dolores Triangle	DB1020	Nov. 17–Nov. 25
North Slope, Summit	DB1021	Oct. 6–Oct. 18
San Juan, Elk Ridge	DB1022	Oct. 20–Oct. 28
South Slope, Diamond Mtn	DB1023	Oct. 20–Oct. 28
West Desert, Vernon	DB1024	Oct. 20–Oct. 28

Muzzleloader hunts

Hunt name	Hunt #	Season dates
Book Cliffs	DB1025	Sept. 26–Oct. 4
Cache, Crawford Mtn	DB1026	Nov. 17–Dec. 2
Fillmore, Oak Creek LE	DB1029	Sept. 26–Oct. 4
La Sal, Dolores Triangle	DB1031	Nov. 28–Dec. 6
San Juan, Elk Ridge	DB1037	Sept. 26–Oct. 4
South Slope, Diamond Mtn	DB1038	Sept. 26–Oct. 4
West Desert, Vernon	DB1042	Sept. 26–Oct. 4

BLACK TEXT: At least one nonresident permit • BLUE TEXT: Resident permits only

HUNT TABLES

The Division does not guarantee access to any private or public land. Hunt unit boundaries may include private property or other excluded areas. Hunters must research land accessibility before hunting.

Limited-entry buck deer (continued)

Muzzleloader hunts on general-season units

Hunt name	Hunt #	Season dates
Beaver (new hunt)	DB1059	Oct. 31–Nov. 8
Chalk Creek/East Canyon/Morgan-South Rich	DB1027	Oct. 31–Nov. 8
Fillmore	DB1028	Oct. 31–Nov. 8
Kamas	DB1030	Oct. 31–Nov. 8
Monroe	DB1032	Oct. 31–Nov. 8
Mt Dutton	DB1053	Oct. 31–Nov. 8
Nine Mile	DB1033	Oct. 31–Nov. 8
North Slope (new hunt, includes North Slope, Summit unit)	DB1065	Oct. 31–Nov. 8
Ogden	DB1054	Oct. 31–Nov. 8
Pine Valley	DB1034	Oct. 31–Nov. 8
Plateau, Fishlake	DB1055	Oct. 31–Nov. 8
Plateau, Thousand Lakes	DB1036	Oct. 31–Nov. 8
South Slope, Yellowstone	DB1039	Oct. 31–Nov. 8
Southwest Desert	DB1040	Oct. 31–Nov. 8
Wasatch Mtns, East	DB1041	Oct. 31–Nov. 8
Zion	DB1043	Oct. 31–Nov. 8

Multi-season hunts

Permit fee: Resident \$145, Nonresident \$845

Use the hunt number to apply. Deer bonus point code: **DEE**

Hunt name	Hunt #	Season dates
Book Cliffs	DB1044	All Limited Entry Seasons
Fillmore, Oak Creek LE	DB1045	All Limited Entry Seasons
San Juan, Elk Ridge	DB1046	All Limited Entry Seasons
South Slope, Diamond Mtn	DB1047	All Limited Entry Seasons
West Desert, Vernon	DB1048	All Limited Entry Seasons

BLACK TEXT: At least one nonresident permit • BLUE TEXT: Resident permits only

HUNT TABLES

The Division does not guarantee access to any private or public land. Hunt unit boundaries may include private property or other excluded areas. Hunters must research land accessibility before hunting.

Youth any bull elk hunts

Permit fee: Resident \$50, Nonresident \$393

Hunt name	Hunt #	Season dates
Youth General Any Bull Elk	EB1007	Sept. 15–Sept. 23

Limited-entry bull elk

Permit fee: Resident \$285, Nonresident \$800

Use the hunt number to apply. Elk bonus point code: **ELK**

Archery hunts

Hunt name	Hunt #	Season dates
Beaver, East	EB3000	Aug. 18–Sept. 14
Book Cliffs, Bitter Creek/South	EB3001	Aug. 18–Sept. 14
Book Cliffs, Little Creek Roadless	EB3002	Aug. 18–Sept. 14
Cache, Meadowville†	EB3003	Aug. 18–Sept. 14
Cache, North	EB3004	Aug. 18–Sept. 14
Cache, South	EB3005	Aug. 18–Sept. 14
Central Mtns, Manti	EB3006	Aug. 18–Sept. 14
Central Mtns, Nebo	EB3007	Aug. 18–Sept. 14
Fillmore, Pahvant	EB3008	Aug. 18–Sept. 14
La Sal, La Sal Mtns	EB3009	Aug. 18–Sept. 14
Monroe	EB3010	Aug. 18–Sept. 14
Mt Dutton	EB3011	Aug. 18–Sept. 14
Nine Mile, Anthro	EB3012	Aug. 18–Sept. 14
North Slope, Three Corners	EB3013	Aug. 18–Sept. 14
Oquirrh-Stansbury	EB3014	Aug. 18–Sept. 14
Panguitch Lake	EB3015	Aug. 18–Sept. 14
Paunsaugunt	EB3016	Aug. 18–Sept. 14
Plateau, Boulder/Kaiparowits	EB3017	Aug. 18–Sept. 14

†This unit is composed of all or largely private property. Hunters should acquire written permission from the landowner before applying for this hunt.

HUNT TABLES

The Division does not guarantee access to any private or public land. Hunt unit boundaries may include private property or other excluded areas. Hunters must research land accessibility before hunting.

Limited-entry bull elk (continued)

Archery hunts

Hunt name	Hunt #	Season dates
Plateau, Fishlake/Thousand Lakes	EB3018	Aug. 18–Sept. 14
San Juan Bull Elk	EB3019	Aug. 18–Sept. 14
South Slope, Diamond Mtn	EB3020	Aug. 18–Sept. 14
Southwest Desert	EB3021	Aug. 18–Sept. 14
Wasatch Mtns	EB3022	Aug. 18–Sept. 14
West Desert, Deep Creek	EB3023	Aug. 18–Sept. 14

Any legal weapon (rifle) — early hunts

Hunt name	Hunt #	Season dates
Beaver, East	EB3024	Sept. 15–Sept. 23
Book Cliffs, Bitter Creek/South	EB3026	Sept. 15–Sept. 23
Book Cliffs, Little Creek Roadless	EB3028	Sept. 15–Sept. 23
Box Elder, Grouse Creek	EB3029	Sept. 15–Sept. 23
Box Elder, Pilot Mtn	EB3031	Sept. 15–Sept. 23
Cache, Meadowville†	EB3032	Sept. 15–Sept. 23
Cache, North	EB3034	Sept. 15–Sept. 23
Cache, South	EB3036	Sept. 15–Sept. 23
Central Mtns, Manti	EB3038	Sept. 15–Sept. 23
Central Mtns, Nebo	EB3040	Sept. 15–Sept. 23
Fillmore, Pahvant	EB3042	Sept. 15–Sept. 23
La Sal, La Sal Mtns	EB3045	Sept. 15–Sept. 23
Monroe	EB3047	Sept. 15–Sept. 23
Mt Dutton	EB3049	Sept. 15–Sept. 23
Nine Mile, Anthro	EB3051	Sept. 15–Sept. 23
Oquirrh-Stansbury	EB3054	Sept. 15–Sept. 23
Panguitch Lake	EB3056	Sept. 15–Sept. 23

†This unit is composed of all or largely private property. Hunters should acquire written permission from the landowner before applying for this hunt.

HUNT TABLES

The Division does not guarantee access to any private or public land. Hunt unit boundaries may include private property or other excluded areas. Hunters must research land accessibility before hunting.

Limited-entry bull elk (continued)

Any legal weapon (rifle) — early hunts

Hunt name	Hunt #	Season dates
Paunsaugunt	EB3058	Sept. 15–Sept. 23
Plateau, Boulder/Kaiparowits	EB3061	Sept. 15–Sept. 23
Plateau, Fishlake/Thousand Lakes	EB3063	Sept. 15–Sept. 23
San Juan Bull Elk	EB3066	Sept. 15–Sept. 23
South Slope, Diamond Mtn	EB3068	Sept. 15–Sept. 23
Southwest Desert	EB3070	Sept. 15–Sept. 23
Wasatch Mtns	EB3072	Sept. 15–Sept. 23
West Desert, Deep Creek	EB3074	Sept. 15–Sept. 23

Any legal weapon (rifle) — midseason hunts

Hunt name	Hunt #	Season dates
Box Elder, Grouse Creek	EB3030	Oct. 6–Oct. 28
Central Mtns, Manti	EB3126	Oct. 6–Oct. 18
North Slope, Three Corners	EB3053	Oct. 6–Oct. 18
Paunsaugunt	EB3059	Oct. 6–Oct. 18
Plateau, Fishlake/Thousand Lakes	EB3064	Oct. 6–Oct. 18
South Slope, Diamond Mtn	EB3069	Oct. 6–Oct. 18
Wasatch Mtns	EB3127	Oct. 6–Oct. 18
West Desert, Deep Creek	EB3075	Oct. 6–Oct. 18

BLACK TEXT: At least one nonresident permit • BLUE TEXT: Resident permits only

HUNT TABLES

The Division does not guarantee access to any private or public land. Hunt unit boundaries may include private property or other excluded areas. Hunters must research land accessibility before hunting.

Limited-entry bull elk (continued)

Any legal weapon (rifle) — late hunts

Hunt name	Hunt #	Season dates
Beaver, East	EB3025	Nov. 10–Nov. 18
Book Cliffs, Bitter Creek/South	EB3027	Nov. 10–Nov. 18
Cache, Meadowville†	EB3033	Nov. 10–Nov. 18
Cache, North	EB3035	Nov. 10–Nov. 18
Cache, South	EB3037	Nov. 10–Nov. 18
Central Mtns, Manti	EB3039	Nov. 10–Nov. 18
Central Mtns, Nebo	EB3041	Nov. 10–Nov. 18
Fillmore, Pahvant	EB3043	Nov. 10–Nov. 18
La Sal, Dolores Triangle	EB3044	Dec. 8, 2018– Jan. 31, 2019
La Sal, La Sal Mtns	EB3046	Nov. 10–Nov. 18
Monroe	EB3048	Nov. 10–Nov. 18
Mt Dutton	EB3050	Nov. 10–Nov. 18
Nine Mile, Anthro	EB3052	Nov. 10–Nov. 18
Oquirrh-Stansbury	EB3055	Nov. 10–Nov. 18
Panguitch Lake	EB3057	Nov. 10–Nov. 18
Paunsaugunt	EB3060	Nov. 10–Nov. 18
Plateau, Boulder/Kaiparowits	EB3062	Nov. 10–Nov. 18
Plateau, Fishlake/Thousand Lakes	EB3065	Nov. 10–Nov. 18
San Juan Bull Elk	EB3067	Nov. 10–Nov. 18
Southwest Desert	EB3071	Nov. 10–Nov. 18
Wasatch Mtns	EB3073	Nov. 10–Nov. 18
West Desert, Deep Creek	EB3076	Nov. 10–Nov. 18

†This unit is composed of all or largely private property. Hunters should acquire written permission from the landowner before applying for this hunt.

BLACK TEXT: At least one nonresident permit • BLUE TEXT: Resident permits only

HUNT TABLES

The Division does not guarantee access to any private or public land. Hunt unit boundaries may include private property or other excluded areas. Hunters must research land accessibility before hunting.

Limited-entry bull elk (continued)

Muzzleloader hunts

Hunt name	Hunt #	Season dates
Beaver, East	EB3077	Sept. 24–Oct. 5
Book Cliffs, Bitter Creek/South	EB3078	Sept. 24–Oct. 5
Book Cliffs, Little Creek Roadless	EB3079	Sept. 24–Oct. 5
Box Elder, Grouse Creek	EB3080	Sept. 24–Oct. 5
Cache, Meadowville†	EB3081	Sept. 24–Oct. 5
Cache, North	EB3082	Sept. 24–Oct. 5
Cache, South	EB3083	Sept. 24–Oct. 5
Central Mtns, Manti	EB3084	Sept. 24–Oct. 5
Central Mtns, Nebo	EB3085	Sept. 24–Oct. 5
Fillmore, Pahvant	EB3086	Sept. 24–Oct. 5
La Sal, La Sal Mtns	EB3087	Sept. 24–Oct. 5
Monroe	EB3088	Sept. 24–Oct. 5
Mt Dutton	EB3089	Sept. 24–Oct. 5
Nine Mile, Anthro	EB3090	Sept. 24–Oct. 5
North Slope, Three Corners	EB3091	Oct. 31–Nov. 8
Oquirrh-Stansbury	EB3092	Sept. 24–Oct. 5
Panguitch Lake	EB3093	Sept. 24–Oct. 5
Paunsaugunt	EB3094	Sept. 24–Oct. 5
Plateau, Boulder/Kaiparowits	EB3095	Sept. 24–Oct. 5
Plateau, Fishlake/Thousand Lakes	EB3096	Sept. 24–Oct. 5
San Juan Bull Elk	EB3097	Sept. 24–Oct. 5
South Slope, Diamond Mtn	EB3098	Sept. 24–Oct. 5
Southwest Desert	EB3099	Sept. 24–Oct. 5
Wasatch Mtns	EB3100	Sept. 24–Oct. 5
West Desert, Deep Creek	EB3101	Sept. 24–Oct. 5

†This unit is composed of all or largely private property. Hunters should acquire written permission from the landowner before applying for this hunt.

BLACK TEXT: At least one nonresident permit • BLUE TEXT: Resident permits only

HUNT TABLES

The Division does not guarantee access to any private or public land. Hunt unit boundaries may include private property or other excluded areas. Hunters must research land accessibility before hunting.

Limited-entry bull elk (continued)

Multi-season hunts

Permit fee: Resident \$513, Nonresident \$1,505

Hunt name	Hunt #	Season dates
Beaver, East	EB3102	All Limited Entry Seasons
Book Cliffs, Bitter Creek/South	EB3103	All Limited Entry Seasons
Book Cliffs, Little Creek Roadless	EB3104	All Limited Entry Seasons
Cache, Meadowville†	EB3105	All Limited Entry Seasons
Cache, North	EB3106	All Limited Entry Seasons
Cache, South	EB3107	All Limited Entry Seasons
Central Mtns, Manti	EB3108	All Limited Entry Seasons
Central Mtns, Nebo	EB3109	All Limited Entry Seasons
Fillmore, Pahvant	EB3110	All Limited Entry Seasons
La Sal, La Sal Mtns	EB3111	All Limited Entry Seasons
Monroe	EB3112	All Limited Entry Seasons
Mt Dutton	EB3113	All Limited Entry Seasons
Nine Mile, Anthro	EB3114	All Limited Entry Seasons
North Slope, Three Corners	EB3115	All Limited Entry Seasons
Oquirrh-Stansbury	EB3116	All Limited Entry Seasons
Panguitch Lake	EB3117	All Limited Entry Seasons
Paunsaugunt	EB3118	All Limited Entry Seasons
Plateau, Boulder/Kaiparowits	EB3119	All Limited Entry Seasons
Plateau, Fishlake/Thousand Lakes	EB3120	All Limited Entry Seasons
San Juan Bull Elk	EB3121	All Limited Entry Seasons
South Slope, Diamond Mtn	EB3122	All Limited Entry Seasons
Southwest Desert	EB3123	All Limited Entry Seasons
Wasatch Mtns	EB3124	All Limited Entry Seasons
West Desert, Deep Creek	EB3125	All Limited Entry Seasons

†This unit is composed of all or largely private property. Hunters should acquire written permission from the landowner before applying for this hunt.

BLACK TEXT: At least one nonresident permit • BLUE TEXT: Resident permits only

HUNT TABLES

The Division does not guarantee access to any private or public land. Hunt unit boundaries may include private property or other excluded areas. Hunters must research land accessibility before hunting.

Limited-entry pronghorn

Permit fee: Resident \$55, Nonresident \$293

Use the hunt number to apply. Pronghorn bonus point code: PRO

Archery hunts

Hunt name	Hunt #	Season dates
Beaver	PB5000	Aug. 18–Sept. 14
Book Cliffs, Bitter Creek	PB5001	Aug. 18–Sept. 14
Book Cliffs, South	PB5002	Aug. 18–Sept. 14
Box Elder, Promontory	PB5003	Aug. 18–Sept. 14
Box Elder, Puddle Valley (boundary change)	PB5004	Aug. 18–Sept. 14
Box Elder, Snowville	PB5005	Aug. 18–Sept. 14
Box Elder, West	PB5006	Aug. 18–Sept. 14
Cache/Morgan-South Rich/Ogden	PB5007	Aug. 18–Sept. 14
Fillmore, Oak Creek South (name change)	PB5008	Aug. 18–Sept. 14
La Sal, Potash/South Cisco	PB5009	Aug. 18–Sept. 14
Mt Dutton/Paunsaugunt, Johns Valley (boundary change)	PB5010	Aug. 18–Sept. 14
Nine Mile, Anthro-Myton Bench	PB5011	Aug. 18–Sept. 14
Nine Mile, Range Creek	PB5053	Aug. 18–Sept. 14
North Slope, Three Corners/West Daggett	PB5012	Aug. 18–Sept. 14
Panguitch Lake/Zion, North	PB5054	Aug. 18–Sept. 14
Pine Valley	PB5013	Aug. 18–Sept. 14
Plateau, Parker Mtn (boundary change)	PB5014	Aug. 18–Sept. 14
San Rafael, Desert	PB5055	Aug. 18–Sept. 14
San Rafael, North	PB5015	Aug. 18–Sept. 14
South Slope, Bonanza/Diamond Mtn	PB5016	Aug. 18–Sept. 14
South Slope, Vernal	PB5017	Aug. 18–Sept. 14
Southwest Desert	PB5018	Aug. 18–Sept. 14
West Desert, Riverbed	PB5019	Aug. 18–Sept. 14
West Desert, Rush Valley	PB5020	Aug. 18–Sept. 14
West Desert, Snake Valley	PB5021	Aug. 18–Sept. 14

BLACK TEXT: At least one nonresident permit • BLUE TEXT: Resident permits only

HUNT TABLES

The Division does not guarantee access to any private or public land. Hunt unit boundaries may include private property or other excluded areas. Hunters must research land accessibility before hunting.

Limited-entry pronghorn (continued)

Muzzleloader hunts

Hunt name	Hunt #	Season dates
Cache/Morgan-South Rich/Ogden	PB5022	Sept. 26–Oct. 4
Plateau, Parker Mtn (boundary change)	PB5023	Sept. 26–Oct. 4
San Rafael, North	PB5056	Sept. 26–Oct. 4
Southwest Desert	PB5024	Sept. 26–Oct. 4

Any legal weapon (rifle) hunts

Hunt name	Hunt #	Season dates
Beaver	PB5025	Sept. 15–Sept. 23
Book Cliffs, Bitter Creek	PB5026	Sept. 15–Sept. 23
Book Cliffs, South	PB5027	Sept. 15–Sept. 23
Box Elder, Promontory	PB5028	Sept. 15–Sept. 23
Box Elder, Puddle Valley (boundary change)	PB5029	Sept. 15–Sept. 23
Box Elder, Snowville	PB5030	Sept. 15–Sept. 23
Box Elder, West	PB5031	Sept. 15–Sept. 23
Cache/Morgan-South Rich/Ogden	PB5032	Sept. 15–Sept. 23
Fillmore, Oak Creek South (name change)	PB5033	Sept. 15–Sept. 23
Kaiparowits	PB5034	Sept. 15–Sept. 23
La Sal, Potash/South Cisco	PB5035	Sept. 15–Sept. 23
Mt Dutton/Paunsaugunt, Johns Valley (boundary change)	PB5036	Sept. 15–Sept. 23
Nine Mile, Anthro-Myton Bench	PB5037	Sept. 15–Sept. 23
Nine Mile, Range Creek	PB5038	Sept. 15–Sept. 23
North Slope, Summit	PB5039	Sept. 15–Sept. 23
North Slope, Three Corners/West Daggett	PB5040	Sept. 15–Sept. 23
Panguitch Lake/Zion, North	PB5041	Sept. 15–Sept. 23
Pine Valley	PB5042	Sept. 15–Sept. 23
Plateau, Parker Mtn (boundary change)	PB5043	Sept. 15–Sept. 23

BLACK TEXT: At least one nonresident permit • BLUE TEXT: Resident permits only

HUNT TABLES

The Division does not guarantee access to any private or public land. Hunt unit boundaries may include private property or other excluded areas. Hunters must research land accessibility before hunting.

Limited-entry pronghorn (continued)

Any legal weapon (rifle) hunts

Hunt name	Hunt #	Season dates
San Juan, Hatch Point	PB5044	Sept. 15–Sept. 23
San Rafael, Desert	PB5045	Sept. 15–Sept. 23
San Rafael, North	PB5046	Sept. 15–Sept. 23
South Slope, Bonanza/Diamond Mtn	PB5047	Sept. 15–Sept. 23
South Slope, Vernal	PB5048	Sept. 15–Sept. 23
Southwest Desert	PB5049	Sept. 15–Sept. 23
West Desert, Riverbed	PB5050	Sept. 15–Sept. 23
West Desert, Rush Valley	PB5051	Sept. 15–Sept. 23
West Desert, Snake Valley	PB5052	Sept. 15–Sept. 23

BLACK TEXT: At least one nonresident permit • BLUE TEXT: Resident permits only

HUNT TABLES

The Division does not guarantee access to any private or public land. Hunt unit boundaries may include private property or other excluded areas. Hunters must research land accessibility before hunting.

Once-in-a-lifetime bull moose hunts

Permit fee: Resident \$413, Nonresident \$1,518

Use the hunt number to apply. Moose bonus point code: **MOO**

Hunt name	Hunt #	Season dates
Cache	MB6000	Sept. 15–Oct. 18
Chalk Creek†	MB6001	Sept. 15–Oct. 18
East Canyon†	MB6002	Sept. 15–Oct. 18
East Canyon, Morgan-Summit†	MB6003	Sept. 15–Oct. 18
Kamas	MB6004	Sept. 15–Oct. 18
Morgan-South Rich†	MB6005	Sept. 15–Oct. 18
North Slope, Summit	MB6006	Sept. 15–Oct. 18
North Slope, Three Corners/West Daggett	MB6007	Sept. 15–Oct. 18
Ogden†	MB6008	Sept. 15–Oct. 18
South Slope, Diamond Mtn/Vernal	MB6009	Sept. 15–Oct. 18
South Slope, Yellowstone	MB6010	Sept. 15–Oct. 18
Wasatch Mtns/Central Mtns	MB6011	Sept. 15–Oct. 18

Once-in-a-lifetime bison hunts

Permit fee (except Antelope Island): Resident \$413, Nonresident \$1,518

Antelope Island permit fee: Resident \$1,110

Use the hunt number to apply. Bison bonus point code: **BIS**

Hunt name	Hunt #	Season dates
Antelope Island (hunter's choice)	BI6500	Dec. 3–Dec. 14
Book Cliffs (hunter's choice)	BI6501	Oct. 13–Nov. 30
Book Cliffs (cow only)	BI6508	Nov. 10–Nov. 30
Book Cliffs, Wild Horse Bench/Nine Mile (boundary change, hunter's choice)	BI6507	Aug. 1, 2018–Jan. 31, 2019
Henry Mtns (archery, hunter's choice)	BI6509	Oct. 5–Oct. 19
Henry Mtns (hunter's choice)	BI6503	Nov. 3–Nov. 15
Henry Mtns (hunter's choice)	BI6504	Nov. 17–Nov. 29

† Mostly private lands

BLACK TEXT: At least one nonresident permit • BLUE TEXT: Resident permits only

HUNT TABLES

The Division does not guarantee access to any private or public land. Hunt unit boundaries may include private property or other excluded areas. Hunters must research land accessibility before hunting.

Once-in-a-lifetime bison hunts (continued)

Hunt name	Hunt #	Season dates
Henry Mtns (cow only)	BI6505	Dec. 1–Dec. 14
Henry Mtns (cow only)	BI6506	Dec. 15–Dec. 31

Once-in-a-lifetime desert bighorn sheep hunts

Permit fee: Resident \$513, Nonresident \$1,518

Use the hunt number to apply. Desert bighorn sheep bonus point code: **DBS**

Hunt name	Hunt #	Season dates
Henry Mtns	DS6600	Sept. 15–Nov. 10
Kaiparowits, East*	DS6601	Sept. 15–Nov. 10
Kaiparowits, Escalante	DS6602	Sept. 15–Nov. 10
Kaiparowits, West	DS6603	Sept. 15–Nov. 10
La Sal, Potash/South Cisco	DS6604	Sept. 15–Nov. 10
Pine Valley	DS6605	Oct. 27–Dec. 30
San Juan, Lockhart	DS6606	Sept. 15–Nov. 10
San Juan, South	DS6607	Sept. 15–Nov. 10
San Rafael, Dirty Devil	DS6608	Sept. 15–Nov. 10
San Rafael, North	DS6609	Sept. 15–Nov. 10
San Rafael, South†	DS6610	Sept. 15–Nov. 10
Zion^	DS6611	Sept. 15–Oct. 12
Zion	DS6612	Oct. 13–Nov. 10

*Nonresidents may hunt both the Kaiparowits East and Escalante subunits—Apply for hunt DS6601

† Nonresidents may hunt both the San Rafael, North and San Rafael, South subunits—Apply for hunt DS6610

^ Nonresidents may hunt both the early and late seasons of the Zion unit—Apply for hunt DS6611

BLACK TEXT: At least one nonresident permit • BLUE TEXT: Resident permits only

HUNT TABLES

Once-in-a-lifetime Rocky Mountain bighorn sheep hunts

Permit fee: Resident \$513, Nonresident \$1,518

Use the hunt number to apply. Rocky Mountain bighorn sheep bonus point code: **RMB**

Hunt name	Hunt #	Season dates
Antelope Island	RS6700	Nov. 14–Nov. 21
Book Cliffs, South	RS6701	Nov. 1–Nov. 30
Box Elder, Newfoundland Mtn	RS6703	Oct. 27–Nov. 16
Box Elder, Newfoundland Mtn	RS6704	Nov. 17–Dec. 9
Box Elder, Pilot Mtn (new hunt)	RS6702	Sept. 1–Oct. 30
Central Mtns, Nebo/Wasatch Mtns (new hunt, new boundary)	RS6719	Nov. 1–Nov. 30
Fillmore, Oak Creek (new hunt)	RS6720	Nov. 1–Nov. 30
Nine Mile, Gray Canyon	RS6712	Nov. 1–Nov. 30
Nine Mile, Jack Creek (boundary change)	RS6713	Nov. 1–Nov. 30
North Slope, Bare Top/West Daggett	RS6714	Nov. 1–Nov. 30

BLACK TEXT: At least one nonresident permit • BLUE TEXT: Resident permits only

HUNT TABLES

Once-in-a-lifetime mountain goat hunts

Permit fee: Resident \$413, Nonresident \$1,518

Use the hunt number to apply. Mountain goat bonus point code: **GOA**

Hunt name	Hunt #	Season dates
Beaver	G06800	Sept. 8–Sept. 23
Beaver	G06801	Sept. 24–Nov. 14
Central Mtns, Nebo	G06803	Sept. 10–Nov. 30
Chalk Creek/Kamas, Uintas	G06804	Sept. 15–Oct. 31
La Sal, La Sal Mtns (new hunt)	G06817	Sept. 10–Nov. 30
Mt Dutton	G06814	Sept 10–Nov. 30
North Slope/South Slope, High Uintas Central (archery)	G06815	Aug. 18–Sept. 9
North Slope/South Slope, High Uintas Central	G06805	Sept. 10–Oct. 31
North Slope/South Slope, High Uintas East	G06806	Sept. 10–Oct. 31
North Slope/South Slope, High Uintas Leidy Peak	G06807	Sept. 10–Oct. 31
North Slope/South Slope, High Uintas West	G06808	Sept. 10–Oct. 31
Ogden, Willard Peak	G06809	Sept. 10–Sept. 23
Ogden, Willard Peak	G06810	Sept. 24–Nov. 14
Ogden, Willard Peak (female goat only)	G06811	Oct. 8–Nov. 15
Wasatch Mtns, Box Elder Peak (new hunt)	G06818	Sept. 10–Nov. 30
Wasatch Mtns, Lone Peak (new hunt)	G06819	Sept. 10–Nov. 30
Wasatch Mtns, Provo Peak	G06813	Sept. 10–Nov. 30
Wasatch Mtns, Timpanogos (new hunt)	G06820	Sept. 10–Nov. 30

BLACK TEXT: At least one nonresident permit • BLUE TEXT: Resident permits only

HUNT TABLES

Cooperative Wildlife Management Units

Utah Admin. Rule R657-37

Utah's Cooperative Wildlife Management Unit (CWMU) program provides landowners with an economic incentive to keep their private range and forest lands as productive wildlife habitat.

The landowners receive vouchers for hunting permits, which they can sell for profit, as long as they also allow a percentage of public hunters on their lands.

If you're a Utah resident, there are two ways to obtain a CWMU permit: you can apply for one in the state's big game drawing, or you can obtain a permit voucher from the landowner or operator of the CWMU you want to hunt.

If you're not a resident of Utah, you cannot apply for a CWMU permit in the public drawing. You can, however, obtain a permit voucher directly from the CWMU landowner or operator.

Keep in mind that whether you draw or purchase a permit, you may not obtain more than one of each of the following permits during the 2018 big game season:

- Buck deer permit
- Bull elk permit
- Pronghorn permit (either buck or doe)

For example, if you draw a general-season buck deer permit—and then decide you want to hunt on a CWMU instead—you must surrender your general-season permit before the opening day of the season listed on your permit and before redeeming the CWMU voucher for a permit.

For more information on Utah's CWMU program, including details about individual properties, please visit wildlife.utah.gov/cwmu.

CWMU premium buck deer hunts

Permit fee: Resident \$168, Use the hunt number to apply.

Nonresidents may only obtain a CWMU permit directly through the operator.

Hunt name	Hunt #	County	Public permits
Alton	DB1200	Kane	5

CWMU management buck deer hunts

Permit fee: Resident \$80, use the hunt number to apply.

Nonresidents may only obtain a CWMU permit directly through the operator.

Hunt name	Hunt #	County	Public permits
Alton	DB1201	Kane	1

For more details about individual properties, including public-hunt dates and contact information, please visit wildlife.utah.gov/cwmu.

HUNT TABLES

CWMU buck deer hunts

Permit fee: Resident \$40, use the hunt number to apply.

Nonresidents may only obtain a CWMU permit directly through the operator.

For detailed information on public hunt-date options, visit wildlife.utah.gov/cwmu or contact the CWMU operator. For more information on the CWMU Program, see page 60.

Hunt name	Hunt #	County	Public permits
Antelope Creek	DB1202	Duchesne	1
Avintaquin Canyon	DB1203	Duchesne	1
Bally Watts	DB1204	Morgan/Weber	2
Bar J Ranch	DB1205	Sevier	2
Bear Mountain	DB1206	Sanpete	1
Bear Springs	DB1207	Morgan/Weber	1
Black Hawk	DB1208	Carbon	1
Blind Spring	DB1209	Box Elder	1
Blue Creek	DB1210	Box Elder	1
Blue Spring Hills	DB1211	Box Elder	1
Bluebell	DB1212	Cache/Weber	1
Boobe Hole	DB1213	Sevier	2
Buckhorn Ranch	DB1215	Duchesne/Wasatch	1
Castle Valley Outdoors	DB1216	Emery	1
Causey Spring	DB1217	Weber	1
Chimney Rock	DB1219	Summit/Morgan	2
Chrises Creek	DB1220	Juab	1
Clear Valley Ranch	DB1221	Box Elder	1
Coldwater Ranch	DB1222	Cache	2
Conover-Jensen	DB1223	Carbon	3
Cotton Thomas	DB1224	Box Elder	1
Coyote Little Pole	DB1225	Wasatch	2
Deer Creek	DB1320	Wasatch	1
Deer Haven	DB1227	San Juan	2
Deseret	DB1228	Morgan/Rich/Weber	15
Dilly Ranch	DB1229	Box Elder	1

HUNT TABLES

CWMU buck deer hunts (continued)

For more details about individual properties, including public-hunt dates and contact information, please visit wildlife.utah.gov/cwmu.

Hunt name	Hunt #	County	Public permits
Double Cone	DB1325	Box Elder	1
Double R Ranch	DB1230	Wasatch	3
Dove Creek	DB1231	Box Elder	2
Durst Mountain	DB1232	Morgan	2
East Fork Chalk Creek	DB1233	Summit	4
East Zion	DB1234	Kane	2
Engineer Springs	DB1236	Box Elder	1
Ensign Ranches	DB1237	Morgan/Rich/Summit	4
Folley Ridge	DB1238	Morgan	3
George Creek	DB1240	Box Elder	1
Golden Spike	DB1241	Box Elder	1
Grass Valley/Clark Canyon	DB1242	Summit	15
Grazing Pasture	DB1243	Sevier	1
Green Canyon	DB1244	Cache	1
Guildersleeve	DB1245	Morgan	2
Hardscrabble	DB1246	Davis/Morgan/Salt Lake	2
Heartland West	DB1247	Juab/Sanpete	2
Heaston East	DB1248	Salt Lake	2
Hiawatha	DB1249	Carbon/Emery	1
Indian Creek	DB1250	Box Elder	2
Indian Head	DB1251	Utah/Carbon/Duchesne	2
Ingham Peak	DB1252	Box Elder	10
J.B. Ranch	DB1253	Grand/San Juan	2
Johnson Mountain Ranch	DB1255	Sevier	1
Junction Valley	DB1256	Box Elder	5
Lazy H Ranch	DB1257	Morgan	1
Little Red Creek	DB1258	Wasatch	2

HUNT TABLES

CWMU buck deer hunts (continued)

For more details about individual properties, including public-hunt dates and contact information, please visit wildlife.utah.gov/cwmu.

Hunt name	Hunt #	County	Public permits
Lone Tree Taylor Hollow	DB1259	Morgan/Summit	4
Mecham Ridge	DB1321	Rich	1
Middle Ridge	DB1260	Rich	3
Minnie Maud Ridge	DB1261	Carbon/Duchesne	5
Moon Ranch	DB1263	Duchesne	1
Mountain Meadow	DB1264	Box Elder	2
Mountain Top	DB1265	Morgan/Summit	2
Mt Carmel	DB1266	Kane	2
Neil Creek	DB1267	Summit	2
North Peaks	DB1303	Box Elder	2
North Promontory	DB1269	Box Elder	2
Nucor West	DB1270	Box Elder	1
Oak Ranch	DB1271	Sevier	3
Old Woman Plateau	DB1272	Sevier	3
Pahvant Ensign	DB1322	Millard/Sevier	1
Park Valley Hereford	DB1273	Box Elder	11
Patmos Ridge	DB1274	Carbon	1
Pine Canyon	DB1275	Morgan	3
Pisgah Mountain	DB1286	Box Elder/Cache	2
Plymouth Peak	DB1276	Box Elder	1
Pocatello Valley	DB1277	Box Elder	1
Powder Mountain	DB1278	Weber/Cache	1
Preston Nutter Ranch	DB1279	Carbon	1
Promontory Point	DB1280	Box Elder	1
Rattlesnake Pass	DB1281	Box Elder	3
Redd Ranches	DB1282	Grand/San Juan	2
Roan Cliffs	DB1283	Carbon	4

HUNT TABLES

CWMU buck deer hunts (continued)

For more details about individual properties, including public-hunt dates and contact information, please visit wildlife.utah.gov/cwmu.

Hunt name	Hunt #	County	Public permits
Rock House	DB1323	Juab	1
Rosette (new hunt)	DB1326	Box Elder	1
Royal Ivory Outfitters	DB1324	Summit	1
Sand Creek	DB1285	Duchesne	1
Scofield Canyons	DB1287	Carbon/Utah	1
Scofield West	DB1288	Carbon/Utah	2
Sharp Mountain	DB1289	Cache/Weber	2
Skull Crack	DB1290	Morgan/Weber	1
Skull Valley South	DB1291	Tooele	1
Soldier Summit	DB1292	Carbon/Utah/Wasatch	2
South Canyon	DB1293	Box Elder/Cache	1
Spring Creek Acres	DB1294	Cache	1
Spring Creek/Dodge	DB1295	San Juan	7
Stillman Creek Ranch	DB1297	Summit	4
Strawberry Ridge	DB1298	Cache/Rich	2
Summit Point	DB1299	San Juan	3
Thatcher Mountain	DB1300	Box Elder	1
Three C	DB1301	Wasatch	2
TJ Cattle Company	DB1302	Morgan	1
Two Bear	DB1304	Summit	2
Wallsburg	DB1305	Wasatch	1
Washakie	DB1306	Box Elder	1
Weber Florence Creek	DB1307	Summit	8
West Hills	DB1308	Box Elder	3
West Willow Creek Ranch	DB1309	Uintah	3
Woodruff Creek South	DB1312	Morgan/Rich	2

HUNT TABLES

CWMU any bull elk hunts

Permit fee: Resident \$285, use the hunt number to apply.

Nonresidents may only obtain a CWMU permit directly through the operator.

For detailed information on public hunt-date options, visit wildlife.utah.gov/cwmu or contact the CWMU operator. For more information on the CWMU Program, see page 60.

Hunt name	Hunt #	County	Public permits
Alton	EB3500	Kane	2
Bar J Ranch	EB3501	Sevier	2
Bear Mountain	EB3502	Sanpete	1
Bear Springs	EB3503	Morgan/Weber	1
Black Hawk	EB3504	Carbon	1
Boobe Hole	EB3505	Sevier	1
Causey Spring	EB3506	Weber	1
Chimney Rock	EB3508	Summit/Morgan	2
Coldwater Ranch	EB3509	Cache	2
Conover-Jensen	EB3510	Carbon	1
Cotton Thomas	EB3511	Box Elder	1
Coyote Little Pole	EB3512	Wasatch	2
Deseret	EB3514	Morgan/Rich/Weber	17
Double Cone	EB3515	Box Elder	1
Double R Ranch (new hunt)	EB3604	Wasatch	1
Durst Mountain	EB3516	Morgan	3
East Fork Chalk Creek	EB3517	Summit	3
Ensign Ranches	EB3519	Morgan/Rich/Summit	3
Folley Ridge	EB3520	Morgan	2
Grass Valley/Clark Canyon	EB3521	Summit	10
Grazing Pasture	EB3522	Sevier	1
Guildersleeve	EB3523	Morgan	1
Hardscrabble	EB3524	Davis/Morgan/Salt Lake	2
Heaston East	EB3525	Salt Lake	3
Hiawatha	EB3526	Carbon/Emery	1
Indian Head	EB3527	Utah/Carbon/Duchesne	2

HUNT TABLES

CWMU any bull elk hunts (continued)

For more details about individual properties, including public-hunt dates and contact information, please visit wildlife.utah.gov/cwmu.

Hunt name	Hunt #	County	Public permits
Ingham Peak	EB3528	Box Elder	2
J.B. Ranch	EB3529	Grand/San Juan	1
Johnson Mountain Ranch	EB3531	Sevier	2
Jump Creek	EB3532	Carbon	1
Junction Valley	EB3533	Box Elder	1
Little Red Creek	EB3534	Wasatch	2
Lone Tree Taylor Hollow	EB3535	Morgan/Summit	3
Meadow Creek (new hunt)	EB3605	Box Elder	3
Minnie Maud Ridge	EB3536	Carbon/Duchesne	4
Moon Ranch	EB3538	Duchesne	2
Mountain Top	EB3539	Morgan/Summit	2
North Peaks	EB3565	Box Elder	1
Old Woman Plateau	EB3540	Sevier	2
Pahvant Ensign	EB3603	Millard/Sevier	1
Patmos Ridge	EB3541	Carbon	1
Powder Mountain	EB3542	Weber/Cache	1
Preston Nutter Ranch	EB3543	Carbon	2
Redd Ranches	EB3544	Grand/San Juan	2
Riverview Ranch LLC	EB3545	Box Elder	2
Roan Cliffs	EB3546	Carbon	2
Sand Creek	EB3547	Duchesne	1
Scofield Canyons	EB3548	Carbon/Utah	1
Scofield East	EB3549	Carbon	1
Scofield West	EB3550	Carbon/Utah	1
SJ Ranch	EB3551	Cache	1
Skull Crack	EB3552	Morgan/Weber	1
Soldier Summit	EB3553	Carbon/Utah/Wasatch	2
South Canyon	EB3554	Box Elder/Cache	1

HUNT TABLES

CWMU any bull elk hunts (continued)

For more details about individual properties, including public-hunt dates and contact information, please visit wildlife.utah.gov/cwmu.

Hunt name	Hunt #	County	Public permits
Spring Creek/Dodge	EB3555	San Juan	2
Strawberry Ridge	EB3557	Cache/Rich	2
Summit Point	EB3558	San Juan	1
Three C	EB3559	Wasatch	2
Two Bear	EB3561	Summit	3
Wallsburg	EB3562	Wasatch	1
Weber Florence Creek	EB3563	Summit	7
Woodruff Creek South	EB3564	Morgan/Rich	3

CWMU pronghorn hunts

Permit fee: Resident \$55, use the hunt number to apply.

Nonresidents may only obtain a CWMU permit directly through the operator.

For detailed information on public hunt-date options, visit wildlife.utah.gov/cwmu or contact the CWMU operator. For more information on the CWMU Program, see page 60.

Hunt name	Hunt #	County	Public permits
Allen Ranch	PB5325	Utah	1
Antelope Creek	PB5300	Duchesne	3
Cedar Springs	PB5326	Box Elder	1
Cottonwood Ridge	PB5327	Duchesne	2
Deseret	PB5302	Morgan/Rich/Weber	29
Ensign Ranches	PB5303	Morgan/Rich/Summit	2
George Creek	PB5330	Box Elder	1
Middle Ridge	PB5304	Rich	2
Pahvant Ensign	PB5328	Millard/Sevier	2
Park Valley	PB5305	Box Elder	1
Rabbit Creek	PB5306	Rich	2
RLF Deep Creek	PB5307	Box Elder	2

HUNT TABLES

CWMU pronghorn hunts (continued)

Permit fee: Resident \$55, use the hunt number to apply.

Nonresidents may only obtain a CWMU permit directly through the operator.

For detailed information on public hunt-date options, visit wildlife.utah.gov/cwmu or contact the CWMU operator. For more information on the CWMU Program, see page 60.

Hunt name	Hunt #	County	Public permits
SJ Ranch	PB5308	Cache	2
Skull Valley South	PB5309	Tooele	1
Snowville Flat	PB5329	Box Elder	2
Strawberry Ridge	PB5310	Cache/Rich	2
The Rose of Snowville	PB5311	Box Elder	2
TL Bar Ranch	PB5312	Tooele/Box Elder	1
West Willow Creek Ranch	PB5313	Uintah	1
Westlake	PB5314	Utah	1
Zane	PB5315	Iron	2

CWMU bull moose hunts

Permit fee: Resident \$413, Use the hunt number to apply.

Nonresidents may only obtain a CWMU permit directly through the operator.

For detailed information on public hunt-date options, visit wildlife.utah.gov/cwmu or contact the CWMU operator. For more information on the CWMU Program, see page 60.

Hunt name	Hunt #	County	Public permits
Bally Watts (new hunt)	MB6261	Morgan/Weber	1
Bear Springs	MB6200	Morgan/Weber	1
Beaver Hollow	MB6201	Morgan/Rich	2
Causey Spring	MB6202	Weber	1
Chimney Rock	MB6204	Summit/Morgan	1
Coyote Little Pole	MB6205	Wasatch	1
Deseret	MB6206	Morgan/Rich/Weber	2
Durst Mountain	MB6207	Morgan	1
East Fork Chalk Creek	MB6208	Summit	2

HUNT TABLES

CWMU bull moose hunts (continued)

Permit fee: Resident \$413, Use the hunt number to apply.

Nonresidents may only obtain a CWMU permit directly through the operator.

For detailed information on public hunt-date options, visit wildlife.utah.gov/cwmu or contact the CWMU operator. For more information on the CWMU Program, see page 60.

Hunt name	Hunt #	County	Public permits
Ensign Ranches	MB6209	Morgan/Rich/Summit	2
Folley Ridge	MB6210	Morgan	1
Grass Valley/Clark Canyon	MB6211	Summit	3
Hardscrabble	MB6251	Davis/Morgan/Salt Lake	1
Jacob's Creek	MB6258	Davis/Morgan	2
Lone Tree Taylor Hollow	MB6215	Morgan/Summit	1
Powder Mountain	MB6216	Weber/Cache	1
Royal Ivory Outfitters	MB6259	Summit	1
Sharp Mountain	MB6217	Cache/Weber	1
SJ Ranch	MB6254	Cache	1
Skull Crack	MB6219	Morgan/Weber	2
South Canyon	MB6220	Box Elder/Cache	1
Strawberry Ridge	MB6222	Cache/Rich	1
Three C	MB6223	Wasatch	1
Two Bear	MB6224	Summit	2
Wallsburg	MB6255	Wasatch	1
Weber Florence Creek	MB6226	Summit	3
Woodruff Creek South	MB6256	Morgan/Rich	1

DEFINITIONS

Utah Code § 23-13-2 and Utah Admin. Rules R657-5-2, R657-5-47, R657-37 and R657-67

The following definitions explain terms used in this guidebook. The *2018 Utah Big Game Field Regulations* (available in June 2018) will contain additional definitions that focus on hunting, harvesting and possessing big game.

Any legal weapon means any weapon listed at wildlife.utah.gov/R657-05 (see R657-5-8 through R657-5-12) or in the Firearms and Archery Equipment section of the *2018 Utah Big Game Field Regulations Guidebook* (available in June 2018).

Big game means species of hoofed protected wildlife.

Buck deer means a deer with antlers longer than five inches.

Buck pronghorn means a pronghorn with horns longer than five inches.

Bull elk means an elk with antlers longer than five inches.

Bull moose means a moose with antlers longer than its ears.

Cactus buck means a buck deer with any velvet covering the antlers during the season dates established by the Wildlife Board for a cactus buck deer hunt.

Certificate of registration means a document issued under any rule or proclamation of the Wildlife Board granting authority to engage in activities not covered by a license, permit or tag.

CWMU means Cooperative Wildlife Management Unit.

Domicile means the place where an individual has a fixed permanent home and principal establishment. It is also the place to which the individual, if absent, intends to return; and

in which the individual, and the individual's family voluntarily reside, not for a special or temporary purpose, but with the intention of making a permanent home. To create a new domicile, an individual shall abandon the old domicile and be able to prove that a new domicile has been established.

Draw lock means a mechanical device used to hold and support the draw weight of a conventional or compound bow at any increment of draw, until released by the archer using a trigger mechanism and safety attached to the device.

Drone means an autonomously controlled, aerial vehicle of any size or configuration that is capable of controlled flight without a human pilot aboard.

Hunter's choice means either sex may be taken.

Hunting means to take or pursue a reptile, amphibian, bird or mammal by any means.

Hunting mentor means a Resident or Nonresident individual possessing a valid permit issued by the Division to take protected wildlife in Utah and who is 21 years of age or older at the time of application for the Mentor Program.

Limited-entry hunt means any hunt that is identified as limited-entry and listed in the hunt table of this guidebook, and that does not include general or once-in-a-lifetime hunts.

Limited-entry permit means any permit obtained for a limited-entry hunt by any means, including multi-season permits, conservation permits, expo permits, sportsman permits, CWMU permits and limited-entry landowner permits.

Nonresident means a person who does not qualify as a resident.

Once-in-a-lifetime hunt means any hunt that is identified as once-in-a-lifetime and listed in the hunt table of this guidebook, and that does not include general or limited-entry hunts.

Once-in-a-lifetime permit means any permit obtained for a once-in-a-lifetime hunt by any means, including conservation permits, expo permits, sportsman permits, CWMU permits and limited-entry landowner permits.

Permit means a document, including a stamp, which grants authority to engage in specific activities under the Wildlife Resources Code or a rule or proclamation of the Wildlife Board.

Possession means actual or constructive possession.

Qualifying minor means a Utah Resident who is under 18 at the time of application for the Mentor Program and who is otherwise eligible to lawfully hunt.

Ram means a male desert bighorn sheep or Rocky Mountain bighorn sheep older than one year of age.

Resident means a person who has a domicile (fixed permanent home and principal establishment) in Utah for six consecutive months immediately preceding the purchase of a license or permit, AND DOES NOT claim residency for hunting, fishing or trapping in any other state or country.

An individual retains Utah residency if he or she leaves Utah to serve in the armed forces of the United States, or for religious or educational purposes, and does NOT claim residency for hunting, fishing or trapping in any other state or country.

Members of the armed forces of the United States and dependents are residents as of the date the member reports for duty under assigned orders in Utah, if:

- the member is NOT on temporary duty in Utah and does NOT claim residency for hunting, fishing or trapping in any other state or country.
- the member presents a copy of his or her assignment orders to a Division office to verify the member's qualification as a resident.

A nonresident attending an institution of higher learning in Utah as a full-time student may qualify as a resident if the student has been present in Utah for 60 consecutive days immediately preceding the purchase of the license or permit and does NOT claim residency for hunting, fishing or trapping in any other state or country.

A Utah resident license or permit is invalid if a resident license for hunting, fishing or trapping is purchased in any other state or country.

An individual DOES NOT qualify as a resident if he or she is an absentee landowner paying property tax on land in Utah.

Shed antlers are antlers that a big game animal has dropped naturally as part of its annual lifecycle.

Shed horns are the sheaths from the horns of a pronghorn that the animal has dropped naturally as part of its annual lifecycle. Pronghorn are the only big game animals that shed their horns.

Sell means to offer or possess for sale, barter, exchange or trade, or the act of selling, bartering, exchanging or trading.

Spike bull means a bull elk which has at least one antler beam with no branching above the ears. Branched means a projection on an antler longer than one inch, measured from its base to its tip.

Tag means a card, label or other identification device issued for attachment to the carcass of protected wildlife.

Take means to:

- hunt, pursue, harass, catch, capture, possess, angle, seine, trap or kill any protected wildlife; or
- attempt any of the above actions.

Wildlife document means a permit to hunt protected wildlife or Division-issued authorization to share such a permit.

TURN IN A POACHER

USING THE UTAH
HUNTING & FISHING APP

wildlife.utah.gov/mobileapp

OR CALLING

800-662-3337

UTiP